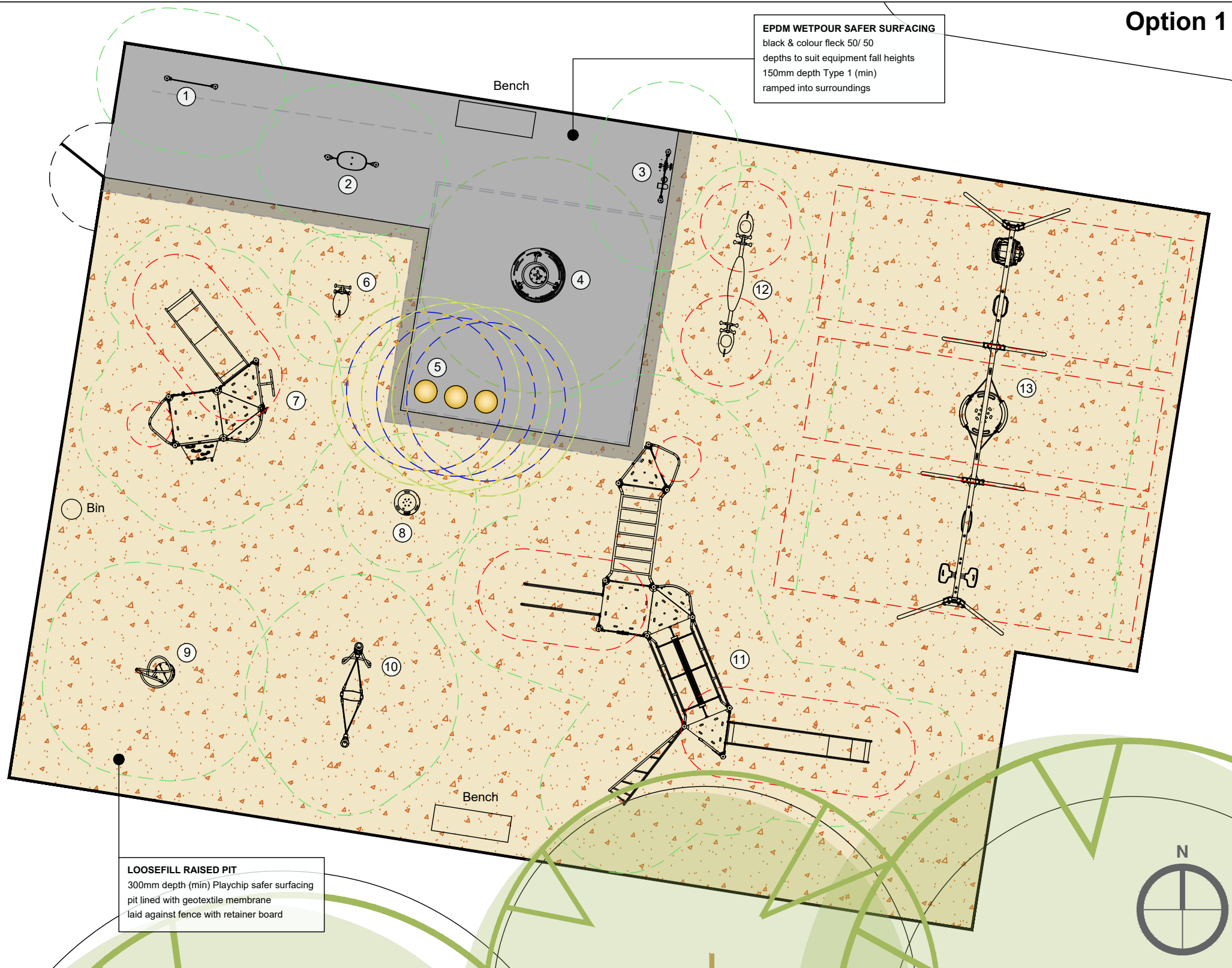


Option 1

Cullaloe View Play Area

Fife Council



EPDM WETPOUR SAFER SURFACING
black & colour fleck 50/ 50
depths to suit equipment fall heights
150mm depth Type 1 (min)
ramped into surroundings

LOOSEFILL RAISED PIT
300mm depth (min) Playchip safer surfacing
pit lined with geotextile membrane
laid against fence with retainer board

	Label: 3 Product Number: PCM003621-20300472 Product Name: Manipulative Play Panel	Age Span: 1+ Inclusive: Yes Count: 1
	Label: 7 Product Number: PCE105822-20300467 Product Name: Motivator Toddler Unit	Age Span: 2+ Inclusive: No Count: 1
	Label: 9 Product Number: GXY970032-20300474 Product Name: Rocket Roller Spinner	Age Span: 6+ Inclusive: No Count: 1
	Label: 10 Product Number: GXY919000 Product Name: Flexus	Age Span: 6+ Inclusive: Yes Count: 1
	Label: 2 Product Number: PCM804 Product Name: Mini Hammock	Age Span: 1+ Inclusive: Yes Count: 1
	Label: 12 Product Number: ELE400022 Product Name: Hopper	Age Span: 3+ Inclusive: Yes Count: 1
	Label: 8 Product Number: ELE400066 Product Name: Springer Bowl	Age Span: 6+ Inclusive: Yes Count: 1
	Label: 1 Product Number: PCM003721-20300471 Product Name: Communications Panel	Age Span: 1+ Inclusive: Yes Count: 1
	Label: 13 Product Number: KSW906-20300464 Product Name: Three Bay Swing	Age Span: 1+ Inclusive: Yes Count: 1
	Label: 11 Product Number: PCE310322-20300470 Product Name: Junior Camba Unit	Age Span: 6+ Inclusive: Yes Count: 1
	Label: 4 Product Number: ELE400065 Product Name: Tipi Carousel with Top Brace	Age Span: 4+ Inclusive: Yes Count: 1
	Label: 5 Product Number: Half Ball 500-Yellow Product Name: Half Wetpour Sphere	Age Span: 1+ Inclusive: Yes Count: 3
	Label: 6 Product Number: ELE400002 Product Name: Racer	Age Span: 2+ Inclusive: Yes Count: 1

Quotation and design is submitted site unseen, we reserve the right, following a full site survey to amend the design appropriately.

Areas and dimensions shown are critical for compliance with European safety standards En1176 & En1177, If in doubt ask!

NOTES

- All existing equipment - slide, swings, seesaw bench and bin to removed and disposed of.
- Existing wetpour and rubber tiles to be removed and disposed of.
- All weeds and undergrowth to be removed by others priors to installation.
- Excavate new area to meet existing gate and existing pod of wetpour. Type 1 laid to depth which will suit finished play chip levels.
- New $\frac{50}{50}$ black and colour wetpour.
- New equipment installed.
- Playchip supplied and blown into designated area.
- Areas and dimensions shown are critical for compliance with European safety standards En1176 & En1177, If in doubt ask!

KOMPAN Scotland Ltd. www.KOMPAN.co.uk
Quarrywood Court T:01506 442 266
Livingston E:kompan.scotland@kompan.com
EH54 6AX

NOT FOR TENDER ISSUE.

©copyright of this drawing remains the property of KOMPAN Scotland Ltd. and the KOMPAN group. This drawing may not be reproduced without prior permission of KOMPAN Scotland Ltd. Any infringement will be pursued.

Project Cullaloe View Play Area Opt.1		Designed by AL
Client Fife Council	Date 12/07/2024	Scale 1:100@A3
Title General Layout	Drawing No. SC16795/02	Revision

Option 1 Cullaloe View Play Area

Fife Council



Image Layout

	KOMPAN Scotland Ltd. www.KOMPAN.co.uk Quarrywood Court T:01506 442 266 Livingston E:kompan.scotland@kompan.com EH54 6AX	
	NOT FOR TENDER ISSUE. ©copyright of this drawing remains the property of KOMPAN Scotland Ltd. and the KOMPAN group. This drawing may not be reproduced without prior permission of KOMPAN Scotland Ltd. Any infringement will be pursued.	
<i>Project</i> Cullaloe View Play Area Opt.1	<i>Designed by</i> AL	
<i>Client</i> Fife Council	<i>Date</i> 12/07/2024	<i>Scale</i> 1:100@A3
<i>Title</i> Image Layout	<i>Drawing No.</i> SC16795/03	<i>Revision</i>