

INVERARAY AVENUE PLAY AREA FIFE COUNCIL

WETPOUR MUSHROOMS



10 FLEXUS

Flexus appeals immensely to teenagers. With its swaying, swinging movements, it gives immediate physical response that teenagers love. When standing on the footrest, holding the support bars and swaying the lower body back and forth.



9 DOUBLE TOWER UNIT

The Two Towers Rope Bridge has lots of climb and glide variations, so children will want to try it out again and again. They will train their cardio and muscles as they loop the slide and the varied climb access points. The inclined net access is a fun challenge which trains the child's proprioception: the awareness of where the body parts are in space and how much force and distance it takes to move securely. The rope ladders are even more challenging with their swaying vertical steps. The bridge trains sense of balance, the fundamental motor skill that make children confident when moving and is important for the ability to sit still and concentrate.

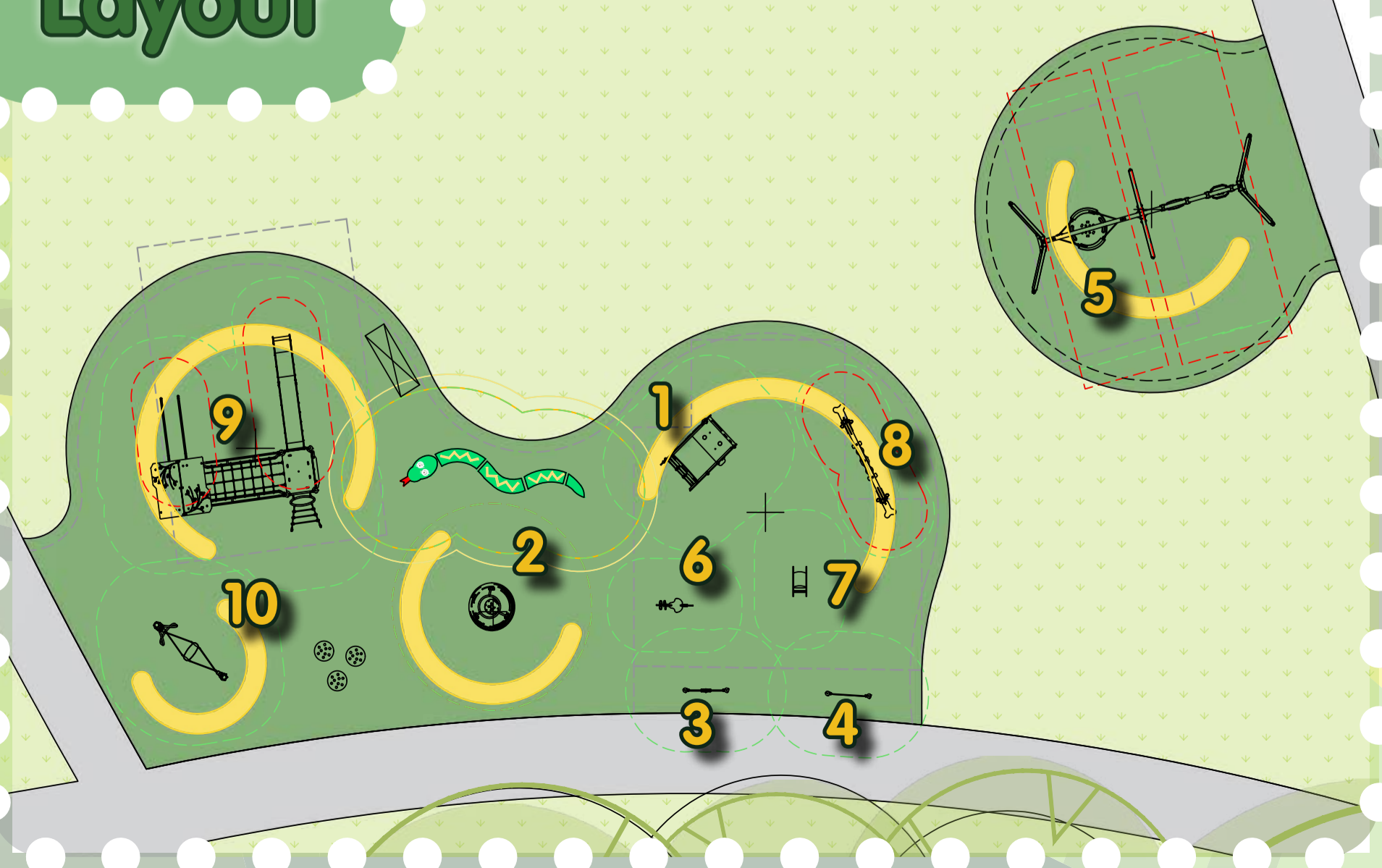


6 CRAZY HEN

The Crazy Hen was a token for play for 50 years: the whimsical bird-look evokes children's curiosity.



Layout



6 CRAZY NELLIE

Children are able to control the play by moving their bodies to make the Dragon rock. They will feel delighted to have the dragon respond to their movements.



2 TIPI CAROUSEL

WOW, a spinning TIPI! The whimsical shapes of the TIPI carousel attracts children in its own right. And they will play here again and again, thanks to the multifunctionality of the slick TIPI.



KOMPAN
Let's play

INVERARAY AVENUE PLAY AREA

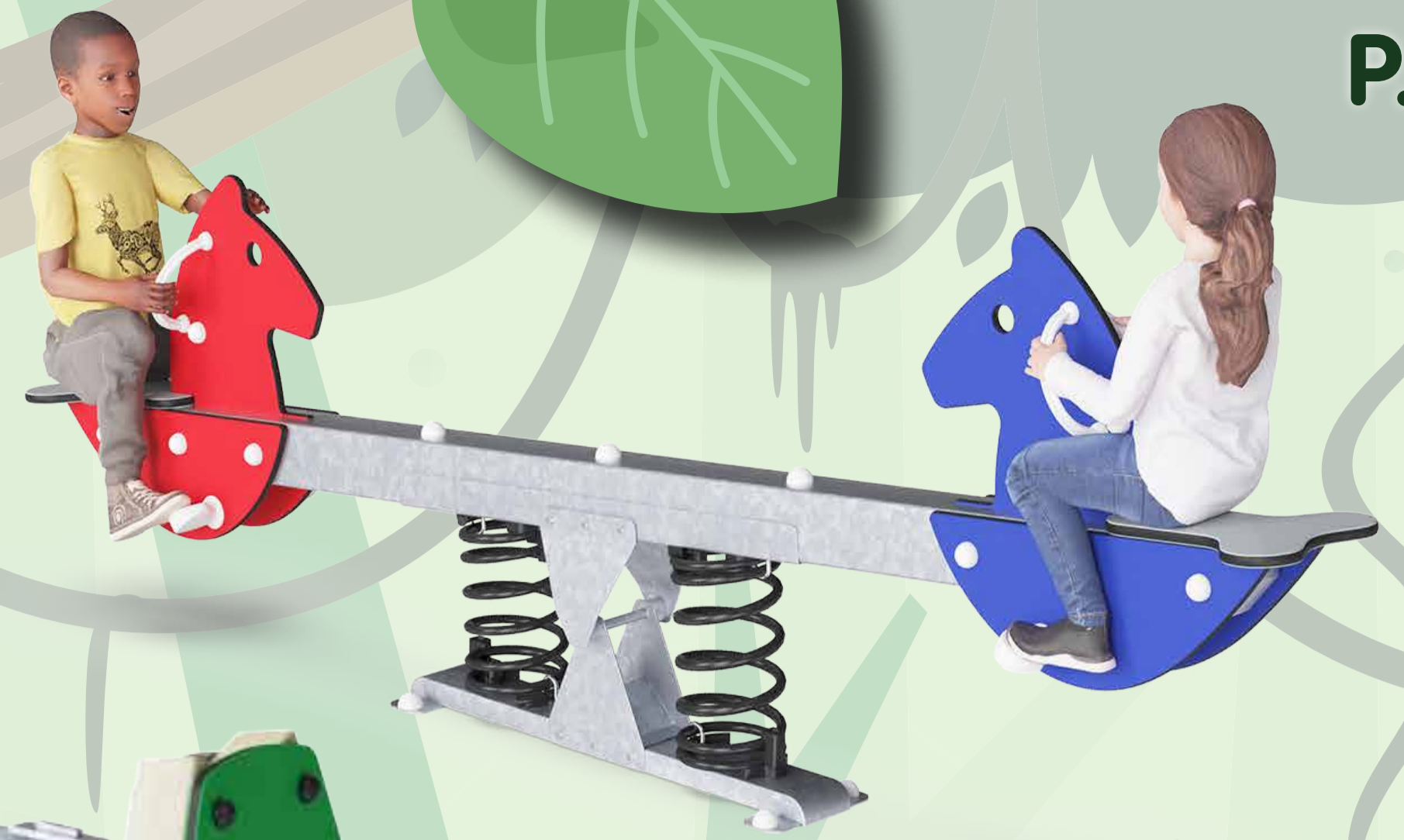
3 COMMs. PANEL

This communication board depicts in an easily understandable way main needs and responses, such as happy, sad, hungry, thirsty, tired.



8 HORSE SEESAW

The Horse seesaw with its friendly-looking horses and vibrant colors invite children to try out the rocking experience



5 DOUBLE BAY SWING

The soft bumpers make this a very comfortable swing seat, which is easy and pleasant to push and use. The lightweight seat welcomes users of all ages and abilities, and heaps of them at any one time, laying, standing or seated, making children return for more play again and again. The holes in the surface provide an extra support for holding tight. The Shell Nest swinging stimulates children's motor skills, such as balance and coordination.



1 FOREST GIRAFFE

The Forest Giraffe is the friendliest animal on the savanna. It attract tots straight away. Thanks to the wide variety of activities, toddlers play for a long time and come back again and again.



4 NUMBER PANEL

The play panels can be played from both sides, which invites social play and communication.



1-12
AGE

20+
ACTIVITIES

50+
USERS

Inveraray Avenue Play Area

Fife Council

EPDM WETPOUR SAFER SURFACING
 50/50 black with coloured fleck
 depths to suit equipment fall heights
 150mm depth Type 1 (min)
 ramped into existing grass

3D WETPOUR SNAKE

WETPOUR MUSHROOMS
 to match toadstool sculpture on site

EQUIPMENT FREE SPACE ZONE
 this zone may not overlap with safety zone
 of other equipment

Option 1



Design assumes the site will be levelled by others(max. gradient 1:100), free draining and with good access
 Quotation and design is submitted site unseen. We reserve the right, following a full site survey to amend the design appropriately.
 Areas and dimensions shown are critical for compliance with European safety standards En1176 & En1177. If in doubt ask!

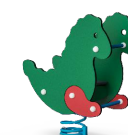
Equipment


- 


1. KOMPAN Double Bay Swing
 ref KSW904 / 20294717
 Total height 275cm
 Fall height 150cm
 Age range 1+ years
 DDA Accessible
- 

2. KOMPAN Horse Seesaw
 ref M182
 Total height 81cm
 Fall height 100cm
 Age range 3+ years
 DDA Accessible
- 

3. KOMPAN Forest Giraffe
 ref MSC5416
 Total height 136cm
 Fall height 56cm
 Age range 6m+ years
 DDA Accessible

- 

4. KOMPAN Crazy Dragon
 ref M113
 Total height 89cm
 Fall height 60cm
 Age range 1+ years
 DDA Accessible
- 

5. KOMPAN Crazy Hen
 ref M101
 Total height 77cm
 Fall height 60cm
 Age range 1+ years
 DDA Accessible
- 

6. KOMPAN TIPI Carousel
 ref ELE400065
 Total height 122cm
 Fall height 100cm
 Age range 4+ years
 DDA Accessible

- 

7. KOMPAN Double Tower Unit
 ref PCM212821 / 20294721
 Total height 382cm
 Fall height 209cm
 Age range 4+ years
 DDA Accessible
- 

8. KOMPAN Flexus
 ref GXY919
 Total height 201cm
 Fall height 135cm
 Age range 6m+ years
 DDA Accessible
- 

9. KOMPAN Play Panel
 ref PCM003621 / 20294778
 Total height 120cm
 Fall height 0cm
 Age range 6m+ years
 DDA Accessible

- 

10. KOMPAN Communications Panel
 ref PCM003721 / 20294765
 Total height 120cm
 Fall height 0cm
 Age range 6m+ years
 DDA Accessible
- 

3D Wetpour Mushrooms
- 

3D Wetpour Snake

<p>KOMPAN Scotland Ltd. www.KOMPAN.co.uk Quarrywood Court T:01506 442 266 Livingston E:kompan.scotland@kompan.com EH54 6AX</p> <p>NOT FOR TENDER ISSUE. ©copyright of this drawing remains the property of KOMPAN Scotland Ltd. and the KOMPAN group. This drawing may not be reproduced without prior permission of KOMPAN Scotland Ltd. Any infringement will be pursued.</p>	
<p>Project Inveraray Avenue Play area</p>	<p>Designed by AL</p>
<p>Client Fife Council</p>	<p>Date 19/06/2024</p>
<p>Title General Layout Opt.1</p>	<p>Drawing No. SC16706/01</p>
	<p>Scale 1:100@A3</p>
	<p>Revision</p>