

**CONSULTATION REPORT ON THE
PROPOSAL TO ESTABLISH A NEW
STAGE OF EDUCATION WITHIN A
SCHOOL – NEW ADDITIONAL
SUPPORT CLASS (ASC) WITHIN
STRATHALLAN PRIMARY SCHOOL,
KIRKCALDY**

Contents

- 1.0 Background to the Proposal
- 2.0 Summary of the Proposal
- 3.0 The Consultation Process
- 4.0 Total Number of and Summary of Written Representations Received
- 5.0 Summary of Oral Representations made at the Public Meetings
- 6.0 Summary of Comments from Pupil Consultation
- 7.0 Fife Council's Response to the Written and Oral Representations made and to the Pupil Consultation
- 8.0 Report from HMIE, Education Scotland
- 9.0 Statement of Fife Council's Response to the Report from HMIE, Education Scotland
- 10.0 Errors, Omissions and Additional Information
- 11.0 Review of the Proposal by Fife Council

Appendices

- A) The Consultation Proposal Document
- B) Notice of Consultation Letter
- C) Notice of Correction of Inaccuracies
- D) Responses to the Consultation Response Form
- E) Comments contained on the returned Consultation Response Form
- F) Other Written Responses, Including Requests for Information (whether Freedom of Information or Otherwise)
- G) Record of Public Meetings
- H) Pupil Consultation Feedback
- I) Any relevant plans, maps and photographs
- J) Equality Impact Assessment

1.0 Background to the Proposal

- 1.1 In order to ensure that the school estate provides best value for money, the Education Directorate must ensure that the number of pupil places, across each type of provision, is matched as efficiently as possible to the numbers of pupils living in the local area. To support this, the Education Directorate undertakes regular reviews of the school estate. Included within these reviews, the Education Directorate must take account of changing demographic patterns leading to falling and rising school rolls in different parts of Fife, planned housing development and other factors which might impact on the need for school places.
- 1.2 Acknowledging the above and taking into account the three guiding principles relating to condition and suitability, occupancy and the progressive reduction in the overall carbon footprint for the Council, a proposal was developed regarding the establishment of a new Additional Support Class provision (ASC) within Strathallan Primary School, Kirkcaldy. For the purpose of the proposal, the new provision is also described as an enhanced provision. Following consideration by the Cabinet Committee, on 5 December 2024, the decision was made to proceed to statutory consultation on the proposal in terms of the Schools (Consultation) (Scotland) Act 2010.
- 1.3 In Fife, the education authority discharges its duty to secure adequate and efficient education for the local authority area by operating a “catchment” system to enable parents/carers to comply with their duty to provide efficient education for their child(ren). Postcodes for each address in Fife are associated to a denominational (Roman Catholic) and non-denominational primary and secondary schools, known as catchment schools. Parents can check their catchment area at [Check school catchment areas | Fife Council](#). School enrolment for mainstream places is managed in Fife through the Schools Admission Policy which can be found at [Schools-Admission-Policy-April-2018.docx \(live.com\)](#).
- 1.4 There are no changes proposed to the catchment area of Strathallan Primary School included within the proposal.
- 1.5 There are no proposed changes to the existing catchment areas for both non-denominational or denominational primary and secondary school catchment areas affected by the proposal.
- 1.6 The proposal does not impact on the ability of Strathallan Primary School to deliver mainstream education for catchment pupils. There will be a reduction in the number of classrooms available for mainstream pupils, however, school roll projections indicate that this will not impact on the number of mainstream education classes required long term within Strathallan Primary School. The proposal does not affect the level of additional support provided to mainstream pupils in Strathallan Primary School or the delivery of mainstream education within Strathallan Primary School. There is no impact on the enrolment arrangements for catchment pupils to Strathallan Primary School.
- 1.7 Currently in Fife most children and young people who have additional support needs have these met within our local, mainstream schools. Some children

with specific additional support needs access specialised provision which may or may not be part of their existing mainstream school. These provisions are designed to meet the needs of children and young people who have additional support needs and allow tailoring of the curriculum, specialised resources and staff training/expertise within these specific provisions and within Fife.

- 1.8 Our vision for children and young people who experience additional support needs (ASNs) is to:

Support them to have high quality educational experiences in their local early learning and childcare (ELC), primary school and secondary school settings, in line with the presumption of mainstream;

Provide high quality educational experiences throughout our enhanced support provisions for learners who require individualised learning environments and more intensive support;

Provide high quality support and professional learning for practitioners and leaders.

- 1.9 Our current provision across Fife is wide and varied to ensure we can meet the needs of all individual children.

- 1.10 Our current provision can be described as follows:

Mainstream – Early, Primary and Secondary

Within mainstream, additional support may be provided to support individuals through targeted support or interventions from school based staff including pupil support assistants, support for learning staff or outreach staff from Support for Learners Service and/or Pupil Support Service.

Enhanced Provision - Additional Support Classes

Additional Support Classes (enhanced support provision) exist at primary stage to meet the pupils' identified additional support needs where these cannot reasonably be met within the mainstream provision alone. At times individual children are on a shared placement between Additional Support Class and their mainstream school.

Special Schools

Offer specialist education for learners with complex additional support needs from 3 to 18 years.

- 1.11 There are currently 8 enhanced provisions within primary schools covering the different geographical parts of Fife – Kirkcaldy (Valley), Glenrothes (Rimbleton), Cupar (Castlehill), Levenmouth (Buckhaven), Dunfermline (Pitreavie) and West Fife (Cairneyhill), Lochgelly/Cowdenbeath (Benarty) area and St Andrews (Canongate) covering the furthest part of North East Fife.

- 1.12 In the secondary sector, all 18 secondary schools provide a continuum of support: universal, additional and intensive support. This includes Support for Learning teachers and Pupil Support Assistants through to the school's Department of Additional Support (DAS).
- 1.13 The admissions arrangements for a pupil requiring access to an ASC provision, for nursery, special and primary stages, is managed through an Area Management Group (AMG) process. There are 3 AMGs which meet a number of times a year covering the geographical areas of Central Fife, North & East Fife and West Fife. Professionals from across sectors and services discuss the most appropriate educational placement for individual pupils regularly throughout the school session. No changes are proposed to these admission arrangements.
- 1.14 Currently there are no children across Fife on a waiting list for a space for an enhanced provision.
- 1.15 The census in September 2023 recorded 26,788 primary aged pupils and 22,377 number of secondary aged pupils.
- 1.16 The Education Directorate carried out a review of the number of ASC provisions across Fife to ascertain:
- a) the number of current pupils with additional support needs (ASN) across Fife requiring enhanced support within an additional support class (ASC) provision
 - (b) the locality of the current ASC provision, and
 - (c) the projected number of pupils who could require this provision in the next 10 years.
- 1.17 The review took into account the number of enhanced provisions across Fife and the projected increase in enhanced places required across Fife, in accordance with pupils expected from new strategic development areas and future school roll projections. The review also considered whether the existing 8 enhanced provisions were located in the most appropriate geographical locations across Fife. Based on this review, it has been highlighted that there are insufficient places available in enhanced provisions having regard to the pupil roll in the Dunfermline and South & West Fife Area and in the Kirkcaldy area.
- 1.18 The current ASC provision that covers the Kirkcaldy area, located within Valley Primary School, has 3 classes to support a maximum of 30 pupils. 2 of these classes are assigned to supporting pupils with additional support needs and the third area is a life skills area. There is no plan to reduce the number of classrooms within Valley Primary School supporting this provision. Based on the pupil roll projections for the Kirkcaldy wide area, a further ASC provision would allow more opportunities for pupil's needs to be met across this geographical area.
- 1.19 Following the Fife wide review of existing enhanced provisions, the number of places on offer, and existing school rolls and future school roll projections, a

proposal was developed to establish a new stage of education in a school – new additional support class (ASC) provision within Strathallan Primary School. The proposal was developed to enable local pupils from the Balwearie High School cluster to attend Strathallan Primary School, to access an ASC provision. This would not affect the allocation of resources to meet the needs of mainstream pupils.

- 1.20 The proposal to create a new ASC provision will ensure that children requiring this enhanced support provision are being educated in the heart of their communities.
- 1.21 There will be no impact on the pupils who currently attend their catchment school for part of the week or attend Valley ASC for their placement on a full-time basis. These placements may continue until transition to high school. However, if the team around the child and the child's parents/carers agree that a change of placement to the new provision would be of benefit, then transition would be well planned to meet the needs of the child.
- 1.22 Following consideration by the Cabinet Committee, on 5 December 2024, the decision was made to proceed to statutory consultation on the proposal in terms of the Schools (Consultation) (Scotland) Act 2010.

2.0 Summary of the Proposal

- 2.1 The statutory consultation process was undertaken in respect of the following proposal:
 - (a) To establish a new ASC provision consisting of 2 classes in Strathallan Primary School (see Appendix 1.1 of Appendix A) from Monday 18 August 2025.
 - (b) The proposed maximum capacity of this provision within Strathallan Primary School will be 20 full-time spaces for children.
- 2.2 The Consultation Proposal Document is contained in Appendix A.

3.0 The Consultation Process

- 3.1 The consultation process was undertaken in terms of the Schools (Consultation) (Scotland) Act 2010. A proposal document was published, which included an educational benefits statement. The relevant consultees included the parents/carers of pupils attending the following primary school; parents of pupils expected to attend the school within 2 years; pupils of the school, staff members and Parent Councils:
 - Strathallan Primary School
- 3.2 The relevant consultees also included trade unions, community councils, community planning partnerships and other users of the schools. The relevant consultees were notified of the proposal by Notice of Consultation dated 6 January 2025 and by advertisement in the local newspaper covering the area associated with the catchment area, week commencing 6 January 2025. The

statutory period of consultation included the minimum requirement of 30 school days and ran from Tuesday 7 January 2025 until close of business on Friday 21 February 2025.

3.3 Section 7 of the 2010 Act requires, as part of statutory consultations on school organisation matters, e.g. closures, establishments of new schools, changes to admission arrangements and catchment areas, that education authorities hold a public meeting to ensure parents/carers and interested parties had an opportunity to hear about the proposal and ask questions of the officers involved.

3.4 The public meeting was publicised in the proposal document and relevant notices; with the links sent to parents through Groupcall and the meetings advertised in the local newspaper and through Fife Council's social media platforms of Twitter and Facebook. This ensured that sufficient notice was given to parents/carers or other interested parties to allow them to take part. The meeting was also publicised on the website at <http://www.fife.gov.uk/StrathallanASCestablishment>. The meeting took place at:

- Strathallan Primary School on Wednesday 29 January 2025 from 6.00-7.00 pm

3.5 The Education Directorate was also able to offer drop-in sessions. The drop-in sessions were arranged and publicised for parents/carers and interested parties, to have an informal chat with officers, where officers were available to discuss the content of the proposal document. The informal drop-in sessions took place at:

- Strathallan Primary School on Wednesday 29 January 2025 from 8.45-9.30 am, 2.45-3.30 pm and 5-6 pm.

3.6 In person pupil consultation sessions were facilitated by the Quality Improvement Officer and the Team Manager, in the school setting, on Tuesday 4th February 2025.

3.7 The pupils involved in the consultation sessions equated to 29% of the total number of P4-P7 pupils across the primary school.

School Name	School Roll Census 2024	No. of P4-P7 Pupils	% of P4-P7 on the roll	P4-P7 participation in sessions	% of P4-P7 pupils
Strathallan PS	281	175	62.3%	51	29%

3.8 In addition, it was also important to gather the views of pupils within existing ASC provisions, associated with this proposal and the proposal to establish a new ASC provision in Strathallan Primary School, which was also being consulted upon at the same time. Officers from the Supported Learners Team carried out focus groups with a number of pupils from the ASC provisions within Cairneyhill, Pitreavie and Valley Primary Schools. Fifteen pupils took part across the 3 schools.

- 3.9 In total, 51 primary aged pupils from P4-P7 took part in the face-to-face consultation sessions. Pupils from the school were asked to provide feedback following a short presentation on the proposal.
- 3.10 The proposal document was sent to HMIE, Education Scotland, on Monday 6 January 2025, together with the Notice of Consultation dated 6th January 2025, issued to all statutory consultees. At the end of the statutory consultation period on Tuesday 21 February 2025, Fife Council provided Education Scotland with a summary of the written and oral representations received in response to the consultation. Fife Council also provided copies of the Consultation Proposal Document; Notice of Consultation; Consultation Proposal Document; blank Consultation Response Form; PowerPoint Presentation from the public meetings and Pupil Consultation Feedback. These documents were issued to Education Scotland on Friday 28 February 2025 for the purpose of the preparation of their report.
- 3.13 Education Scotland provided a draft report to Fife Council on Thursday 13 March 2025 and the final report on Wednesday 19 March 2025. The report is contained in Part 8 of this report.
- 3.14 Fife Council has reviewed the proposal having regard to the written and oral representations received and the Education Scotland report, before preparing this Consultation Report. This report will be published in electronic and printed form. Notification of the publication of this Consultation Report will be given to those who made written representation on the proposal and the publication of this Consultation Report will be advertised. Opportunities will then be available for consultees and other interested parties to make representations to the elected members of Fife Council who will make the decision on whether to implement the proposal, in whole or in part, or not. The Cabinet Committee, on 29 May 2025, will consider the Consultation Report and be invited to decide on it. The decision of that committee will be subject to internal governance procedures before it becomes final.
- 4.0 **Total Number of and Summary of Written Representations Received**
- 4.1 In total, 20 written representations were received. These comprised 18 Consultation Response Forms (some with detailed comments) and two written representations received by email.
- 4.2 The Consultation Response Form was available online at [Proposal to Establish a New Stage of Education Within a School - New Additional Support Class \(ASC\) Within Strathallan Primary School, Kirkcaldy - Fife Council - Citizen Space](#) and in paper format at the affected school and from the Main Reception at Fife House, Glenrothes, for those who requested it. Printed copies of the Consultation Response Form were also available at the public meeting and informal drop-in sessions. A copy is reprinted at Appendix 1.6 of Appendix A to this report.
- 4.3 During the consultation process a total of 18 responses to question 3.1 on the Consultation Response Form were received. The table below provides details of the responses.

	Question 3.1 Do you support the proposal to establish a new ASC provision within Strathallan Primary School, Strathallan Drive, Kirkcaldy from Monday 18 August 2025? (please choose one ✓)					
Parent/Carer of a child living in the:	Consultees who responded Yes	%	Consultees who responded No	%	Consultees who responded Don't know	%
Strathallan Primary School	1	5	8	45	4	22
Valley Primary School ASC provision	1	5	0	0	0	0
A primary school in the Balwearie HS cluster	0	0	0	0	0	0
A nursery in the Balwearie HS cluster	0	0	0	0	0	0
None of the above	0	0	0	0	0	0
Total	2	14	8	58	4	28

Pupil living in the:	Consultees who responded Yes	%	Consultees who responded No	%	Consultees who responded Don't know	%
Strathallan Primary School	0	0	0	0	0	0
Valley Primary School ASC provision	0	0	0	0	0	0
A primary school in the Balwearie HS cluster	0	0	0	0	0	0
A nursery in the Balwearie HS cluster	0	0	0	0	0	0
None of the above	0	0	0	0	0	0
Total	0	0	0	0	0	0

Member of staff:	Consultees who responded Yes	%	Consultees who responded No	%	Consultees who responded Don't know	%
Strathallan Primary School	1	100	0	0	0	0
Valley Primary School ASC provision	0	0	0	0	0	0
A primary school in the Balwearie HS cluster	0	0	0	0	0	0
A nursery in the Balwearie HS cluster	0	0	0	0	0	0
None of the above	0	0	0	0	0	0
Total	1	100	0	0	0	0

Other Interested Party	0	0	3	100	0	0
Overall Total	3	17	11	61	4	22

4.4 In summary, 14 parents/carers responded to the consultation response form, along with 1 staff member and 3 interested parties. No pupils completed the online consultation form.

4.5 Of the 18 responses received:

- Three of those who responded were in favour of the proposal to establish a new Additional Support Class (ASC) provision within Strathallan Primary School (17%).
- Four of those who responded did not know whether they were in favour or were opposed to the proposal to establish a new Additional Support Class (ASC) provision within Strathallan Primary School (22%).
- Eleven of those who responded were not in favour of the proposal to establish a new Additional Support Class (ASC) provision within Strathallan Primary School (61%), Eight of these eleven responses were from parents/carers of children currently attending Strathallan Primary School. Three of these eleven responses were from interested parties, described as resident in the community or grandparents.

4.6 Summary of comments from the Consultation Response Forms

4.6.1 The responses from the Consultation Response Form are provided in Appendix E. The following summarises the comments made from the written statements received via the Consultation Response Form.

- Two of those who responded commented that they thought a new ASC provision would have a positive impact on the lives of children with additional support needs or complex needs within their local community. One respondent would prefer a purpose built facilitate to support pupils additional/complex needs.
- A small number of those who responded feel that the educational benefit statement within the proposal is inappropriate as it only lists positive effects with no negative effects listed for existing school pupils. These respondents were concerned the proposal would be detrimental to existing pupils and staff and the wider community.
- A small number of those who responded have questioned the falling school roll in comparison to the increase in ASC places required and there is no evidence to show that more pupils require ASC places to support the rationale for the proposal. This was in relation to the new large housing sites across Kirkcaldy Area and how school rolls are falling.
- Over half of those who responded have raised concerns regarding the parking issues within the school and surrounding area and the safety issues by having additional cars on site.
- A small number of those who responded raised concern regarding pupil safety in school and, in particular, the impact on playground space available and teaching spaces within the school with the addition of an ASC provision.
- Concern was raised regarding the arrangements and timescale for creating the new provision and how this would be managed if the provision is not

completed by October 2025.

- Concern by one respondent regarding the staffing of the provision and how existing pupils will be supported in the playground along with pupils from the ASC provision.
- A small number of those who responded were concerned about the influx of families into the catchment area and how these pupils could be accommodated with classes being used for an ASC provision.
- A small number of those who responded questioned whether other schools were considered for the proposed new provision and would seek assurance that there will be no more than 20 pupils.
- There was concern raised that the space and resources would be taken away for existing pupils, that the proposal would increase the number of composite classes throughout the school or indeed increase the number of pupils in mainstream classes, as there would likely be fewer classrooms available. One respondent suggested reducing the number of placing requests across the school.
- One respondent advised that the timescale for the consultation is inadequate, and the information supplied was minimal within the proposal.
- One respondent advised that they felt that all residents in the area should have been advised of the consultation and not just parents/carers.
- One respondent queried the use of a third classroom
- Concern was raised over the lack of detail in the proposal – number of spaces in ASC i.e. 20 maximum, however there will be part time children so will mean more than 20 children overall and no consideration of ASC at other schools in area instead.

4.7 Summary of other written representations made

4.7.1. The written representations received are provided in Appendix F. The following is a summary of the comments made from the written representations received:

- Concern raised by one respondent on the school roll if there was an increase of pupils within the catchment area and there was no space to accommodate these pupils. This respondent requested clarity whether the ASC provision in Strathallan Primary School would accommodate pupils only from Strathallan and not other schools.
- This respondent also highlighted parking issues around the school.
- One respondent raised a concern regarding the further cohort of pupils and an increase in composite classes.

4.8 Requests for information

- One representation requested a copy of the minutes / meeting record from the public meeting, to better comprehend the proposal and consider other concerns raised. These were provided via <https://haveyoursay.fife.gov.uk/communities/proposal-to-establish-a-new-stage-of-education-wit/>

5.0 **Summary of Oral Representations made at the Public Meetings**

5.1 As indicated in paragraph 3.4, 1 public meeting was held. Other than HMIE, Education Scotland, 14 people attended the public meeting (including the Headteacher and Depute Headteacher). The Record of the Public Meeting is contained in Appendix G. The key issues raised at the public meeting are summarised as follows:

5.2. School Roll Projections/Impact of New Housing

5.2.1 A number of people at the public meeting raised their concern with the future school rolls and what would happen if more pupils moved into the catchment area, where there were not enough classes to accommodate these pupils as well as the ASC provision. People requested clarity that catchment places would be guaranteed and there would not be an oversubscription of pupils.

5.3 Impact on staffing at Strathallan Primary School

5.3.1 Clarity was requested at the public meeting on whether there would be a change to the management model of the school, the budget of the school including staffing, the budget associated with the ASC provision and how the ASC provision would be managed.

5.4 Impact on pupils enrolled at Strathallan Primary School

5.4.1 It was highlighted at the public meeting that one respondent had concerns on whether this proposal would be a detriment to existing pupils of the school.

5.4.2 A concern was raised regarding the potential for there to be an increase in the number of composite classes within the mainstream school.

5.5 Transport and Travel

5.5.1 The parking around the school, the lack of spaces and the increased traffic in the neighbourhood was raised as a concern by a number of people attending the public meeting.

5.6 Pupil Roll within the ASC

- 5.6.1 A number of concerns were raised regarding the allocation of places within an ASC provision, the criteria for attending an ASC provision and how split placements work in practice.
- 5.6.2 Concern was raised regarding the planned capacity within the ASC, in particular whether this would increase beyond 20 places.
- 5.6.3 One respondent queried the use of the third classroom within the school.

5.7 Plans for use of the ASC

- 5.7.1 One respondent asked whether the ASC pupils would be integrated into mainstream classes, what enhanced support would be provided for the ASC and whether there would be supervision in the playground for all pupils when ASC pupils are in the playground.
- 5.7.2 The facilities to be provided were questioned, in particular for outdoor learning and how the playground would be utilised

6.0 **Summary of Comments from the Pupil Consultation**

- 6.1 The pupil consultation was carried out in accordance with Education Scotland best practice and in accordance with 'Participants, Not Pawns – Guidance on Consulting with Children and Young People,' Scotland's Commissioner for Children and Young People.
- 6.2 A Groupcall message was issued by the schools to all parents/carers with a child in P4-P7, to advise that their child may be selected to take part in one of these sessions. Parents who did not want their child to attend were asked to contact their school. The consultation sessions took place on 4 February 2025, with groups comprising of P4/P5 and P6/7 pupils.
- 6.3 A total of 51 pupils took part in the pupil consultation sessions. This equated to 29% of pupils from P4-P7 stages in Strathallan Primary School.
- 6.4 The questions and the information provided by pupil groups is detailed in Appendix H. A summary of responses to the questions is listed below:

6.4.1 Are you aware of a consultation proposal to set up a new ASC in this school?

The majority of pupils from P4-P7 from Strathallan Primary School were aware of the consultation taking place as it has been discussed in school. Only a handful of pupils advised that it had been discussed at home.

6.4.2 What do you think about the proposal to set up a new ASC in this school?

Pupil comments from all of the groups highlighted that pupils were keen for new

pupils to join the school, to increase the number of pupils on site, to enable more friendship groups and to allow pupils to learn in a quiet and safe environment. Overall, the pupils from all the groups at the individual schools were positive and enthusiastic to provide well considered feedback.

6.4.3 What do you think about the plan to use the 2 classrooms for a maximum of 20 pupils that would attend the ASC?

The pupils did not feel that the proposed new provision would have a negative impact and that it would be good that the spare classrooms would be used.

6.4.4 Do you think there will be any impact on the school if current Strathallan pupils did not have access to these classrooms? What would this mean for the pupils?

The pupils felt that the only impact on pupils would be the infant classes that would need to move to other classes in the building. There would be no impact on upper stages of the school.

6.4.5 Do you think this will make any difference to your time in school (P4/5/6/7) educational experience?

Pupils did consider whether the dining and playground areas would be large enough, however, they suggested they could have break and lunch at different times.

6.4.6 Would they have any concerns for more pupils attending the school? There may be another 20 pupils in the school?

The majority of pupils liked being part of a bigger school but feel that more pupils would require more resources such as tables/chairs etc.

6.4.7 Do you think it would be good for any pupils from this area to attend this school for this provision rather than travelling to Valley Primary School? This option may allow pupils to walk to school rather than being taxied into Valley Primary School – do you think this is a good idea?

Pupils recognised the importance of being able to walk to school and felt that it would be good for pupils at the ASC to walk to school if possible and they would have other children to walk with.

6.4.8 What's important to you about your school?

The pupils described all of the things they liked about their school with the most commented being the playground, the resources in the school, the safe and welcoming environment and the caring teachers who all supported children in their learning.

6.5 From the information received from the pupil consultation sessions, almost all of the pupils were supportive of more pupils joining their school, to enable more friendship groups and to allow pupils to learn in a quiet and safe environment.

6.6 In addition to the pupil consultation within Strathallan Primary School, it was important to ensure that pupils within the existing ASC provision in Valley Primary had an opportunity to take part. As outlined in paragraph 3.8, the proposal to establish an additional ASC provision in South & West Fife area was running concurrently with the proposal and therefore the pupil consultation also included pupils from the Cairneyhill and Pitreavie Primary School ASC provision, 15 pupils took part across the 3 schools. The feedback is also included in Appendix H.

6.7. A summary of responses to the questions is listed below:

6.7.1 What's do you like about being in an ASC?

Pupils indicated a number of responses to demonstrate what is important to them with access to swimming, lunch and a sensory area stated most.

6.7.2 What do you not like about the ASC?

Those pupils able to choose indicated that being outside and the computer were the things they did not like the most.

7.0 Fife Council's Response to the Written and Oral Representations made and to the Pupil Consultation

7.1 The main themes raised from written/oral representations and from the pupil consultation are as follows:

(a) Educational Benefits Statement

A small number of those who responded feel that the educational benefit statement within the proposal is inappropriate as it only lists positive effects with no negative effects listed for existing school pupils. These respondents were concerned the proposal would be detrimental to existing pupils and staff and the wider community.

Within the proposal paper, Fife Council is required to produce an educational benefits statement. The educational benefits statement sets out the council's assessment of the likely educational benefits that it believes will result from implementation of the proposal. It is important that the educational benefits statement sets out clearly the positive benefits that would accrue from implementation of a proposal. It was important for the council to set out and summarise clearly why it believes implementation of a proposal is of overall benefit to the pupils of the affected school, children who would be likely to become pupils at the school(s) within two years of the publication of the proposal paper and other children and young people in the council area.

The statement of educational benefits was prepared under the terms of the Act and needed to be comprehensive and detailed. It also needed to be specific to this particular proposal and not rely on generalised assertions.

The educational benefits statement included in the Proposal Paper sets out clearly how approaches for meeting children and young people's learning, personal, social, health and emotional needs will be improved as a result of implementation of the proposal, including setting out how implementation of the proposal will improve support for children and young people who require additional support for learning across the whole school.

The council has also considered the positive impact implementation of the proposal will have on the overall environment and ethos of the whole school ensuring equality of opportunity for all within an inclusive educational experience.

However, the benefits statement does also consider any other likely effects of the proposal; how the council intends to minimise or avoid any adverse effects that may arise from the proposal; and benefits which the council believes will result from implementation of the proposal, and the council's reasons for coming to these beliefs.

(b) School Roll Projections/Impact of New Housing

A number of people at the public meeting raised their concern with the future school rolls and what would happen if more pupils moved into the catchment area, where there were not enough classes to accommodate these pupils as well as the ASC provision. People requested clarity that catchment places would be guaranteed and there would not be an oversubscription of pupils. It was highlighted at the public meeting that one respondent had concerns on whether this proposal would be a detriment to existing pupils of the school.

The analysis of school roll projections, to take into account the pupils already born into the catchment area, was included in the proposal paper. The projections consider the impact of any housing sites. The maximum capacity of the school, as reported within the Core Facts return to the Scottish Government in May 2024, is 434 pupils (14 classes). The school roll recorded for Census 2023 was 281 pupils (65% occupied), within 11 classes. For session 2024/25, the school is operating with 11 classes, a total roll of 281 pupils, 65% occupied. School roll projections are reviewed on an annual basis and consider any proposed development from the Local Development Plan ([Local development plan \(FIFEplan\) | Fife Council](#)) or any brownfield opportunity sites that may come forward.

The mainstream school roll projections for the next 10 years (updated based on census 2024) are as follows:

	2025	2026	2027	2028	2029	2030	2031	2032	2033	2034
Roll	269	238	222	207	205	194	181	181	184	184
Classes	11	10	10	9	9	9	9	9	9	9

The above school roll projections for Strathallan Primary School take into account the births in the catchment area, the primary one enrolment trends and any new pupils expected from the housing developments in the Strathallan Primary School catchment area. There are no large-scale housing developments expected within

the Strathallan Primary School catchment area. These projections demonstrate that there will be sufficient capacity to accommodate a potential increase in the number of catchment pupils over time. While it is planned that two classrooms will be allocated to the new provision, the projected school roll of Strathallan Primary School indicates that no more than 11 classes are required long term. The reduction in capacity for mainstream classes to create this provision will not impact on the number of multi-purpose areas within the school. Mainstream pupils will still have access to the dining hall and gym hall, and there are sufficient multi-purpose areas across the school for all existing and new users.

Based on the robustness of the roll projections Fife Council does not foresee any difficulty in Strathallan Primary School being able to accommodate catchment pupils. It is not anticipated that the proposal will have a negative effect on the school's ability to accept placing requests, which require to be considered in line with the Education (Scotland) Act 1980 and the Schools Admissions Policy for Primary and Secondary Schools in Fife. The proposed change takes account of the Council's duty to ensure that the number of pupil places, across each type of provision, is matched as efficiently as possible to the numbers of pupils living in the local area while maintaining flexibility for enrolment for Strathallan Primary School.

A review of the ASC provision across Fife, as detailed in Appendix A, Rationale for the Proposal - The Case for the Establishment of a New Provision within Strathallan Primary School; took into account the number of enhanced provisions and the projected increase in enhanced places required across Fife, in accordance with pupils expected from new strategic development areas and future school roll projections. The review also considered whether the existing 8 enhanced provisions were located in the most appropriate geographical locations across Fife.

Based on this review, it was highlighted that there are insufficient places available in enhanced provisions having regard to the pupil roll in the in the Kirkcaldy area. This accounts for the proposed new housing across the Kirkcaldy area, where there are approximately 2,800 new homes to be constructed in due course, and the consequential increase in demand for enhanced provision. The establishment of this new ASC provision within Strathallan Primary School will allow children to attend an enhanced provision within their locality and may reduce the need for transportation across the Kirkcaldy area.

In developing the proposal officers considered the schools across the Kirkcaldy area. It is important that any new provision meets the needs of the community, The enhanced provision will allow pupils from the Balwearie High School cluster to be located in closer proximity to their mainstream catchment school. These pupils will be able to transition to secondary school with their peers. Strathallan has a reducing school roll, the maximum capacity of the school, as reported within the Core Facts return to the Scottish Government in May 2024, was 434 pupils (14 classes). The school roll recorded for Census 2023 was 281 pupils (65% occupied), within 11 classes. For session 2024/25, the school continues to operate with 11

classes, a total roll of 281 pupils, 65% occupied. In addition, the Building Condition, Suitability and Accessibility ratings for Strathallan Primary Schools are, for all three areas, rated as “A” which is the highest rating. This building is performing well and operates efficiently (the school buildings support the delivery of services to children and communities). Importantly, it is fully accessible.

(c) Transport and Travel Arrangements

Parking around the school, the lack of spaces and the increased traffic in the neighbourhood, was raised as a concern by a number of people attending the public meeting., as well as within the written representations.

Fife Council currently exceeds the statutory requirement in respect of the provision of free transport for primary aged children and provides all primary pupils living more than one mile from their catchment school with free transport. For those who walk to school, the safety of our pupils en route is important for the Education Service, therefore walked route assessments are carried out to ensure that the routes are available in accordance with the Walked Routes to School Assessment Policy. There are specific criteria to be considered by officers undertaking these assessments. Additionally, in accordance with legislation and Fife Council policy, it is assumed that a pupil will be accompanied by an adult when walking to school until parents decide that their child is able to walk on their own or with a group of friends.

For most houses in the catchment area the distance to Strathallan Primary School would be within one mile.

Every school in Fife has a School Travel Plan. This will be updated, in consultation with stakeholders, including the Parent Council, to reflect any change in the arrangements.

However, there will be access across the ASC site. The majority of children will be transported in a minibus, so it will be shared transport, minimising any additional vehicles on site.

(d) Timescale

Some concern was raised regarding the arrangements and timescale for creating the new provision and how this would be managed if the provision is not completed by October 2025. (Please note: October 2025 was referenced as the property works, should the proposal be accepted, are anticipated to run from Summer to October 2025.)

Currently there is no ‘waiting list’ for places within the ASC provision across Fife. The proposal is designed to create additional capacity within our enhanced provisions. Allocation of places will not start until a final decision is taken on whether the proposal will progress.

Pupils requiring this enhanced support will be provided with a place within an existing provision until additional places are available.

The provision will be occupied gradually. The admissions arrangements for a pupil requiring access to an ASC provision, for nursery, special and primary stages, is managed through an Area Management Group (AMG) process. There are 3 AMGs which meet a number of times a year covering the geographical areas of Central Fife, North & East Fife and West Fife. Professionals from across sectors and services discuss the most appropriate educational placement for individual pupils regularly throughout the school session. No changes are proposed to these admission arrangements.

(e) Plans for use of the ASC

One respondent asked whether the ASC pupils would be integrated into mainstream classes, what enhanced support would be provided for the ASC and whether there would be supervision in the playground for all pupils when ASC pupils are in the playground. The facilities to be provided were questioned, in particular for outdoor learning and how the playground would be utilised

Some of the children who attend an ASC have a 'Split Placement' which means they potentially attend an ASC for some of the week and their catchment school or mainstream class for the rest of the week. Some of the children from the ASC would integrate into sessions such as PE and drama with staff from the ASC supporting them.

This will not affect mainstream classes as the children would be supported by ASC staff. Where children accessing the ASC are using the main playground they would be supervised. They will be able to use the main playground if they are able to do so with enhanced support. In addition, the children within the ASC will have access to a small fenced outdoor area, allowing children to be outdoors at lunch and break times.

A separate external entrance to the ASC provision will ensure the dignity of each individual and their cloakroom area will be quiet and only for their use, allowing for a quiet transition into the classrooms. As the grounds are very expansive, there is an opportunity for access to the wider school playground, allowing for easy integration with the whole pupil group as appropriate.

The proposed accommodation allows flexibility for pupils to retreat to quiet spaces and will be further enhanced with dedicated outdoor learning provision to ensure learning can be creative both indoors and outdoors. The building will be able to deliver the curriculum to ensure the best possible educational experiences and outcomes for our children. The available classrooms to support this provision can be separated from the other areas of the school. This allows a more supportive learning facility for our learners to enable a more secure and peaceful environment. Access to the wider school environment will be planned for and responsive to the needs of the individual pupils, and staff will be able to support pupils to achieve this in a safe and structured way.

Well planned and designed accommodation will ensure the varying needs of all children can be supported throughout the new provision. As well as

generous classroom spaces designed to assist the delivery of different curricular areas, direct access to an enclosed outdoor area will allow the pupils to enhance their learning experience. All of the existing classrooms have height adjustable sinks. Both classrooms will be able to be accessed by any pupils with a physical disability. The ASC provision will have 20 places available, 10 children in each ASC is the preferred model. The third classroom not currently being used will be available for use by all pupils within the school, including by the ASC provision, ensuring flexibility for the Headteacher.

Adaptations to the existing accessible toilet with changing facilities will be implemented to comply with current legislation.

The creation of the proposed enhanced provision will complement the existing nursery and mainstream stream provision within Strathallan Primary School. The transition for any pupil requiring this enhanced provision will be well planned and agreed within the team around the child.

(f) Staffing and Resources

Clarity was requested at the public meeting on whether there would be a change to the management model of the school, the budget of the school including staffing, the budget associated with the ASC provision and how the ASC provision would be managed.

If the proposal is approved, the ASC provision will be staffed accordingly with both teachers and support staff for the number of pupils that are expected for August 2025 by the local authority.

There will be no impact on mainstream staffing numbers as a result of the proposed new provision. The mainstream provision and allocation of other resources will not be affected by the establishment of this enhanced provision. Mainstream pupils will still have access to targeted interventions, Pupil Support Assistants and Support for Learning Teacher to ensure their needs are met effectively.

The staffing budget for an ASC is separate to the core devolved staffing budget of a school, which is based on the number of pupils enrolled. The core school budget does also include an additional weighted factor where the school has an ASC, to account for time required by the Leadership Team to support this. Therefore, the management model of the school would be reviewed, and may increase, if the proposal is progressed.

For ASC provision the budget is held by the Education Service, not the school devolved budget, as the staffing allocation and resources required are reviewed regularly depending on the needs of the children accessing the ASC. The profiles of the children can vary and changes happen throughout the year.

Mainstream classes within Primary 1 to Primary 7 are staffed according to the number of pupils on the school roll, with class size maxima set nationally by the Scottish Negotiating Committee for Teachers. Pupils within ASC will not impact on the number of composite classes within the school. Each year there are around

1,200 classes in Fife primary schools, around 400 of these are composite classes.

8.0 Report from HMIE, Education Scotland

The report from HMIE, Education Scotland is reproduced on the following pages.

Schools (Consultation) (Scotland) Act 2010

Report by Education Scotland addressing educational aspects of the proposal by Fife Council to establish a new stage of education within a school – new additional support class (ASC) within Strathallan Primary School, Kirkcaldy.

March 2025

Introduction

- 1.1 This report from Education Scotland has been prepared by His Majesty's Inspectors of Education (HM Inspectors) in accordance with the terms of the [Schools \(Consultation\) \(Scotland\) Act 2010](#) ('the 2010 Act'). The purpose of the report is to provide an independent and impartial consideration of a proposal by Fife Council to establish a new stage of education within a school - new additional support class (ASC) within Strathallan Primary School, Kirkcaldy. Section 2 of the report sets out brief details of the consultation process. Section 3 of the report sets out HM Inspectors' consideration of the educational aspects of the proposal, including significant views expressed by consultees. Section 4 summarises HM Inspectors' view. Upon receipt of this report, the Act requires the council to consider it alongside any relevant considerations the council received and then prepare its consultation report. The council's consultation report should include this report and must contain an explanation of how, in finalising the proposal, it has reviewed the initial proposal, including a summary of points raised during the consultation process and the council's response to them. The council has to publish its consultation report at least three weeks before it takes its final decision. With all proposals the council needs to follow all statutory obligations set out in the 2010 Act.
- 1.2 HM Inspectors considered:
- the likely effects of the proposal for children of the setting; any other users; children likely to become pupils within two years of the date of publication of the proposal paper; and other children in the council area;
 - any other likely effects of the proposal;
 - how the council intends to minimise or avoid any adverse effects that may arise from the proposal; and
 - the educational benefits the council believes will result from implementation of the proposal, and the council's reasons for coming to these beliefs.
- 1.3 In preparing this report, HM Inspectors undertook the following activities:
- attendance at the public meeting held on 29 January 2025 in connection with the council's proposals;
 - consideration of all relevant documentation provided by the council in relation to the proposal, specifically the educational benefits statement and related consultation documents, written and oral submissions from parents and others; and
 - visits to the site of Strathallan Primary School and Balwearie High School, including discussion with relevant consultees.

2. Consultation process

- 2.1 Fife Council undertook the consultation on its proposal(s) with reference to the [Schools \(Consultation\) \(Scotland\) Act 2010](#).
- 2.2 The council undertook the consultation from 7 January to 21 February 2025. Copies of the proposal were made available to stakeholders and on the council website. Fife Council held a public meeting at Strathallan Primary School on 29 January 2025, which 14 stakeholders attended. On the same day, the council also held informal drop-in sessions at Strathallan Primary School. The council received 18 responses to their online consultation. Most respondents were parents or carers who had a child living in the school cluster area. A majority of respondents are opposed to the proposal to establish a new stage of ASC provision within Strathallan Primary School. A few respondents are supportive of the proposal and a minority were unsure of how to answer. Those supportive of the proposal noted that a new ASC provision would have a positive impact on the lives of children with additional support needs within their local community. A few respondents noted that the educational benefits statement did not take account of any potential negative benefits to children and the wider community. A few respondents questioned the predictions for future roll numbers, the number of children who will access the ASC and projected timescale for implementation. A majority of respondents also had concerns over the safety of children due to any potential increase in traffic around the school.

3. Educational aspects of proposal

- 3.1 The council's proposal is to establish a new stage of ASC provision within Strathallan Primary School, which is within the Balwearie High School cluster. The maximum capacity of the provision will be 20 full-time places. This is in response to a projected reduction in the school roll, alongside a projected increase in demand for enhanced provision and ASCs across the Kirkcaldy West area.
- 3.2 The council has set out educational benefits to establish a new stage of ASC provision within Strathallan Primary School. These include providing a new ASC provision that will ensure that children from the local community that require enhanced support can access this provision locally. It will also enable those local pupils to transition with their peers to the cluster secondary school where there is also ASC provision. The council states that the creation of an enhanced provision within Strathallan Primary School will help children and the community to develop a shared understanding of an inclusive education and diversity. HM Inspectors agree with the proposal to establish a new stage of ASC provision. The projected school roll is reducing, which provides opportunities for the establishment of ASC provision. This will enable children with additional support needs to access provision locally where they can interact with and transition to secondary with their peers. The indoor and outdoor space will be designed flexibly and creatively to support the wellbeing

of all learners. Children will learn collaboratively in all curricular areas. Opportunities for integration into the wider school community will be promoted and offered where appropriate, which will help ensure the children feel part of the Strathallan Primary School community.

- 3.3 Almost all parents that met with HM Inspectors were opposed to the proposal. They questioned the reliability of the pupil roll projections, which relate to the projected decrease in the school roll given proposed housing developments in the area. They were concerned about any potential negative impact on the children attending mainstream classes, including loss of playgroups space, classrooms and any increase in traffic flow. All children that met with HM Inspectors were supportive of the proposal. They suggested there was lots of space indoors and outdoors to accommodate children with enhanced needs. Children noted the benefits of having a dedicated ASC with appropriate equipment. They also noted concerns relating to any increase in traffic and the potential dangers to all children.
- 3.4 Almost all primary school cluster staff that met with HM Inspectors were supportive of the proposal. They recognise the benefits of children learning alongside their peers in their local community. They know that the number of children requiring enhanced provision is rising across the area and that this proposal may help to address this. A few staff welcome the professional learning opportunities of working alongside specialist ASC staff. However, with the addition of an ASC provision, a few staff noted concerns relating to any increase in responsibilities for the leadership and management of the school. A few secondary school staff that met with HM Inspectors also recognised the educational benefits of children learning and transitioning within their cluster area. However, concerns were raised relating to the need for a consistent approach to assessment of need. This will help to ensure that children's needs can be met within ASC provision in the secondary schools. Should the proposal be approved, the council should work with stakeholders to ensure that the projected figures are clearly set out and understood. Appropriate arrangements for transition and safe routes to school should also be considered.
- 3.5 During the consultation period a few stakeholders questioned the council on the reliability of the pupil roll projections outlined in the proposal. The council will need to ensure that it takes the necessary steps to consider these questions. In its consultation report, the council will need to set out the actions it has taken to address these concerns.

4. Summary

HM Inspectors agree that the proposal has educational benefits. These may include the potential for better transition arrangements within the school cluster area. Children will have the opportunity to learn and play within a local school alongside their peers. Staff may benefit from professional learning opportunities from working with additional support needs staff. Should the proposal be approved, the council should work with stakeholders to ensure

that the projected figures are clearly set out and understood. Appropriate arrangements for transition and safe routes to school should also be considered. In its consultation report, the council will need to set out the actions it has taken to address concerns relating to reliability of pupil roll projections.

HM Inspectors
March 2025

9.0 Statement of Fife Council's response to the report from HMIE, Education Scotland

- 9.1 Fife Council is pleased to note that the independent and impartial report from Education Scotland confirms that the proposal is of educational benefit. Although the majority parents were not in favour of the proposal, all pupils, and the majority of staff who met with HM Inspectors were supportive. Fife Council has noted that providing a new ASC provision will ensure that children from the local community that require enhanced support can access this provision locally. The provision will also enable those local pupils to transition with their peers to the cluster secondary school where there is also ASC provision. The indoor and outdoor space will be designed flexibly and creatively to support the wellbeing of all learners. Children will learn collaboratively in all curricular areas. Opportunities for integration into the wider school community will be promoted and offered where appropriate, which will help ensure the children feel part of the Strathallan Primary School community.
- 9.2 The report raises the following points which can be responded to as follows:
- 9.2.1 Paragraph 3.3: Almost all parents that met with HM Inspectors were opposed to the proposal. They questioned the reliability of the pupil roll projections (also referred to in Para 3.5), which relate to the projected decrease in the school roll given proposed housing developments in the area. They were concerned about any potential negative impact on the children attending mainstream classes, including loss of playgroups space, classrooms and any increase in traffic flow.

School Roll Projections

In response, Fife Council refers to paragraphs 7.1 (b) above. Fife Council will continue to monitor house building and the pupil product from all proposed and consented housing in the Kirkcaldy area. Fife Council considers that, based on current NHS births in the Strathallan catchment area and the pupil product used in assessing demand from new housing developments, the projected number of pupils can be accommodated within Strathallan Primary School, with 11 classes. This will not impact on the flexible, dining, PE or external space available.

Fife Council is confident that the collaboration between the Planning Service and the Education Directorate, to analyse and respond to planning applications, is robust. School capacity risks are reviewed whenever the Housing Land Audit is renewed and when every new planning application is received and the roll projections reflect current pupil numbers, school capacity, class organisation and other relevant legislation and policies. These assessments are and will continue to be based on school data that is updated annually e.g. Pupil Census, School Estate Core Facts and Housing Land Audit.

While there can be no guarantee that placing requests can be accommodated, this proposed change is not expected to impact negatively on this type of flexibility for enrolment for Strathallan Primary School. All placing requests will be considered in line with the Education (Scotland) Act 1980 and the School Admissions Policy for Primary and Secondary Schools in Fife.

Impact on mainstream pupils

The proposed ASC will have its own playground area but pupils may, at times, also access the main playground, where appropriate. This would be supervised. There is no impact on the mainstream classes which will be accommodated within the existing classrooms within the school. As the ASC is staffed separately, there will be no negative impact on staffing budget or staffing allocations for mainstream classes.

The children within the ASC will have access to a small fenced outdoor area, allowing children to be outdoors at lunch and break times.

A separate external entrance to the ASC provision will ensure the dignity of each individual and their cloakroom area will be quiet and only for their use, allowing for a quiet transition into the classrooms. As the grounds are very expansive, there is the opportunity for access to the wider school playground, allowing for easy integration with the whole pupil group as appropriate.

Traffic

In response, Fife Council refers to paragraphs 7.1 (c) above.

- 9.2.2 Paragraph 3.4: A few staff noted concerns relating to any increase in responsibilities for the leadership and management of the school. A few secondary school staff raised concerns relating to the need for a consistent approach to assessment of need. Should the proposal be approved, the council should work with stakeholders to ensure that the projected figures are clearly set out and understood. Appropriate arrangements for transition and safe routes to school should also be considered.

In response, Fife Council refers to paragraphs 7.1 (b) and 7.1 (c) above. Fife Council currently exceeds the statutory requirement in respect of the provision of free transport for primary aged children and provides all primary pupils living more than one mile from their catchment school with free transport. For those who walk to school, the safety of our pupils en route is important for the Education Service, therefore walked route assessments are carried out to ensure that the routes are available in accordance with the Walked Routes to School Assessment Policy.

For most houses in the catchment area the distance to Strathallan Primary School would be within one mile. Every school in Fife has a School Travel Plan. This will be updated, in consultation with stakeholders, including the Parent Council, to reflect any change in the arrangements.

Fife Council confirms that all transitions will be well planned to ensure positive experiences for all children. Individual pupil plans will allow for an enhanced transition for those pupils who would be accessing the new provision within Strathallan Primary School from August 2025.

In response to the responsibilities for the leadership and management of the school, staffing in a primary school is determined by a formula which takes into account the number of pupils and whether the school has an ASC, as well as a number of other factors. All young people are counted in this calculation. Strathallan Primary School leadership team reduced in 2024, due to the roll reduction within the setting. The management model of the school will be

reviewed if the proposal is progressed, to assess any increased leadership capacity required.

- 9.2.3 Paragraph 3.5: During the consultation period a few stakeholders questioned the council on the reliability of the pupil roll projections outlined in the proposal. The council will need to ensure that it takes the necessary steps to consider these questions. In its consultation report, the council will need to set out the actions it has taken to address these concerns.

The Council has addressed these concerns fully in the Consultation Report. Projections, updated annually to reflect actual pupil enrolments, have been detailed to reflect the 2024 census data. This data continues to show the overall reduction in the pupil roll at Strathallan Primary School, demonstrating that any future increase remains likely to be able to be accommodated within the existing accommodation, including the ASC provision, if approved.

10.0 Errors, Omissions and Additional Information

- 10.1 There were no errors or omissions identified following publication of the Consultation Proposal Document.
- 10.2 An equality impact assessment has been completed. The assessment included the consultation process and could not have been made available during the consultation process. It is additional information which is relevant and forms Appendix J to this report.

11.0 Review of the Proposal by Fife Council

- 11.1 Following receipt of the report from Education Scotland, Fife Council has reviewed the proposal, having regard (in particular) to the written and oral representations made and to Education Scotland's report.
- 11.2 Children have been consulted and provided with the right to express their opinions in this matter affecting them and those views have been considered fully in the Fife Council review of the proposal.
- 11.3 Although the majority of respondents to the statutory consultation were not in favour of the proposal, proportionally there was a low response to the consultation. While not seeking to minimise the concerns, to put it in context there are currently 281 pupils enrolled at Strathallan Primary school which means approximately 150 families are affected, together with other statutory consultees. However, as indicated, 20 written representations were received and 14 people attended the public meeting (including the Headteacher and Depute Headteacher).
- 11.4 The Council welcomes the positive response from Education Scotland, with HM Inspectors agreeing the educational benefits of the proposal, including the potential for better transition arrangements within the school cluster area and children having the opportunity to learn and play within a local school alongside their peers.

- 11.5 The proposal gained approval from all pupils engaged in the consultation with Education Scotland, and the majority of staff supported the approval, highlighting the professional learning opportunities for staff members.
- 11.6 Due regard has been given to the concerns raised by parents/carers and other stakeholders and Fife Council will continue to work with stakeholders to ensure the pupil roll projections are clearly set out and understood, that appropriate arrangements are in place for transition and for the school travel plan and walked routes to school assessments are up revised to ensure they are up to date.
- 11.7 In view of the above, it is recommended that approval be given to the proposal to establish a new stage of education in a school, being new additional support class (ASC) provision within Strathallan Primary School, Strathallan Drive, Kirkcaldy KY2 5YP from Monday 18 August 2025.

FIFE COUNCIL EDUCATION DIRECTORATE

***PROPOSAL TO ESTABLISH A NEW STAGE OF EDUCATION WITHIN A
SCHOOL – NEW ADDITIONAL SUPPORT CLASS (ASC) WITHIN
STRATHALLAN PRIMARY SCHOOL, KIRKCALDY***

THE CONSULTATION PROCESS –

The following schools are affected by this Proposal Document:

- Strathallan Primary School

This document has been issued by Fife Council as a proposal paper in terms of the Schools (Consultation) (Scotland) Act 2010.

DISTRIBUTION

A copy of this document is available on the Fife Council website:

<http://www.fife.gov.uk/StrathallanASCestablishment>

A link to this document, published on the website, will be provided to:

- The Parent Council or combined Parent Council of any affected school
- The parents of the pupils at any affected school
- The parents of any children expected by the education authority to attend the affected school within 2 years of the date of publication of the proposal paper.
- The pupils at any affected school (in so far as the education authority considers them to be of suitable age and maturity)
- The staff (teaching and other) at any affected school
- Trade union representatives of the above staff (teaching and other) at any affected school
- The Community Councils for the affected areas, being: Kirkcaldy West
- The Community Planning Partnership for the relevant area
- Any other Community Planning Partnership that the local authority considers relevant
- Any other education authority that the education authority considers relevant
- Any other users of any affected school that the education authority considers relevant
- Elected members for the area (Wards 9 – Burntisland, Kinghorn and Western Kirkcaldy and Ward 10 – Kirkcaldy North)
- MSPs for the area (David Torrance, Claire Baker, Murdo Fraser, Roz McCall, Alex Rowley, Mark Ruskell, Liz Smith and Alexander Stewart)
- The Constituency MP - Melanie Ward.

A copy of this document is also available for inspection at and collection from:

- Main Reception, Fife Council, Fife House, North Street, Glenrothes, KY7 5LT

The schools affected by the proposal (between 9am and 3pm)

- Strathallan Primary School, Strathallan Drive, Kirkcaldy KY2 5YP
- Online at <http://www.fife.gov.uk/StrathallanASCestablishment>
- or via email to sustainableschoolestate.enquiries@fife.gov.uk.

This document can be made available, on request, free of charge, in alternative formats, or in translated form for readers whose first language is not English.

Please apply in writing to: Education Directorate, 4th Floor, Fife House, North Street, Glenrothes KY7 5LT or by email to: kim.lawson@fife.gov.uk (telephone 03451 555555 ext. 444331). Page 19 of this document provides additional contact numbers, in different languages.

SUMMARY OF PROCESS FOR THIS PROPOSAL DOCUMENT

1. Consideration by the Cabinet Committee

This Proposal Document has been issued as a result of a decision by the Cabinet Committee of Fife Council on 5 December 2024. Views are now sought in formal consultation on the proposal in this document.

2. Notice of Consultation and Publication of the Proposal Document

Statutory consultees will be given notice of the proposal. The proposal document will be published on the council website (www.fife.gov.uk). Copies will be available for inspection at and available from:

- Main Reception, Fife Council, Fife House, North Street, Glenrothes, KY7 5LT

The schools affected by the proposal (between the hours of 9 am and 3 pm)

- Strathallan Primary School, Strathallan Drive, Kirkcaldy KY2 5YP
- Online at <http://www.fife.gov.uk/StrathallanASCestablishment>
- or email sustainableschoolestate.enquiries@fife.gov.uk.

3. Advertisement of the Proposal

The proposal will be advertised through Fife Council's social media accounts e.g. Facebook and X (formerly known as Twitter). An advertisement will also be placed in local newspapers, week commencing Monday 6 January 2025. The schools impacted by the proposal will also publicise the consultation process in newsletters, school bag mail and email.

4. Length of Consultation period

The consultation will commence on Tuesday 7 January 2025 and will, thereafter, run until close of business on Friday 21 February 2025. This meets the statutory requirement for a minimum period of 6 weeks, that runs continuously and includes 30 school days.

5. Public meetings

The Education Authority are required in accordance with the Schools (Consultation) (Scotland) Act 2010 to hold one public meeting. This will be held at Strathallan Primary School on Wednesday 29 January 2025 from 6.00-7.00 pm

where there will be opportunities to:

- hear more about the proposal
- ask questions about the proposal
- complete a Consultation Response Form
- have your views recorded so that they can be considered as part of the consultation process.

Informal drop-in sessions have been arranged at:

- Strathallan Primary School on Wednesday 29 January 2025 from 8.45-9.30 am, 2.45-3.30 pm and 5-6 pm

At the informal drop-in sessions, there will be opportunities for parents/carers/pupils and other stakeholders to:

- hear more about the proposal
- ask questions about the proposal
- complete a Consultation Response Form.

6. Responding to the Proposal

Interested parties can also respond to this proposal document by making a written representation (by letter, email, or completion of a Consultation Response form) on the proposal, before close of business Friday 21 February 2025, to any of the following:

- sustainableschoolestate.enquiries@fife.gov.uk
- Proposal to establish a New ASC Provision within Strathallan Primary School, Education Directorate, Fife Council, 4th Floor (West), Fife House, North Street, Glenrothes, KY7 5LT
- via submission of a completed online Consultation Response Form at (Managing our School Estate / Fife Council) <https://forms.office.com/e/saCkTnM8f2>.

7. Pupil Consultation

Pupil focus groups will be arranged during the consultation period with representative groups of over 25% of the pupils within P4-P7 in Strathallan Primary School and a separate session with pupils in the Valley ASC provision. Parents/
carers will be asked to consent to their child taking part.

The intention of these pupil focus groups is to seek the views of pupils regarding the proposed plan to establish a new ASC provision in Strathallan Primary School.

These sessions will be carried out by officers within the Education Directorate and will use display boards and materials to explain what a consultation is, what the proposal would mean to pupils and seek their views on any potential impact to the existing pupils.

The information from pupils will be included in the report to Education Scotland and the Consultation Report at the end of the process.

8. Involvement of Education Scotland HM Inspectors

A copy of the proposal paper will be sent to Education Scotland, by Fife Council. Education Scotland will also receive a copy of any relevant written representations that are received by the Council from any person during the consultation period or, if Education Scotland agrees, a summary of them. Education Scotland will further receive a summary of any oral representation made to the Council at the public meetings and, as available (and so far as otherwise practicable), a copy of any other relevant documentation. Education Scotland will then prepare and submit a report on the educational aspects of the proposal within a 3-week period (unless the Council and Education Scotland agree a longer period) after the Council has sent them all representations and documents mentioned above. However, for the avoidance of doubt, the 3-week period will not start until after the consultation period ends. Education Scotland may make such reasonable enquiries of such people at the school (e.g. Headteacher, staff, pupils) as they consider appropriate and may make such reasonable enquiries of such other people as they consider appropriate.

9. Preparation of Consultation Report

The Council will review the proposal having regard (in particular) to the Education Scotland Report and written representations that it has received. In addition, oral representations made at the public meetings/information sessions will form part of that review. It will then prepare a Consultation Report. The report will include a record of the total number of written representations made during the consultation period, a summary of the written representations and a summary of the oral representations made at the public meeting, as well as a copy of the Education Scotland Report and any other relevant information, including details of any alleged inaccuracies and how these have been handled. The report will also contain a statement explaining how it complied with the requirement to review the proposal in light of the Education Scotland Report and representations (both written and oral) that it received. The Consultation Report will be published and available for further consideration for a period of 3 weeks before a decision can be made on the proposal. The report will be published, made available for inspection and where reasonably required, made available without charge in other forms. The publication of the report will be advertised and any person who made written representations during the consultation period will be advised of its publication.

10. Decision

The Consultation Report, together with any other relevant documentation, will be considered by the Cabinet Committee, which will come to a decision whether to

implement the proposal, in whole or in part, or not. The decision of the Cabinet Committee will be subject to the Council's internal governance procedures before it becomes final. The proposal on which Fife Council is deciding is not a proposal which is subject to call in by the Scottish Government and is not subject to review by the School Closures Review Panel.

11. Note on Corrections

If during the consultation period any inaccuracy or omission is discovered in this proposal document, either by the Council or by notification from any other person, the Council will determine whether relevant information has in its opinion been omitted, or whether there is in fact an inaccuracy, and whether the omission or inaccuracy relates to a material consideration relevant to the education authority's decision as to the implementation of the proposal. It will then take appropriate action in respect of the inaccuracy or omission which may include deciding to take no further action, issuing a notice in respect of the inaccuracy or omission, extending the consultation period or publishing a correct proposal document and giving revised notice of the consultation. Where applicable, the notifier of the inaccuracy or omissions will be advised of the determination, the reasons for that determination and the action (if any) it is taking and of the reasons why it is or is not taking such action and the notifier will be invited to make representations to the Council if they disagree with the determination or decision whether to take action. Where the notifier makes representations, the education authority can make a fresh determination and decision in respect of the inaccuracy or omission and must inform the notifier if it does so.

Fife Council

Education Directorate

THE CONSULTATION PROPOSAL

**PROPOSAL TO ESTABLISH A NEW STAGE OF
EDUCATION IN A SCHOOL - NEW ADDITIONAL
SUPPORT CLASS (ASC) WITHIN STRATHALLAN
PRIMARY SCHOOL, KIRKCALDY**

Format of the Proposal Document

- 1 Introduction and Background Information
 - 2 The Proposal
 - 3 Rationale for the Proposal - The Case for Establishing a New ASC Provision within Strathallan Primary School
 - 4 Educational Benefits Statement
 - 5 Transport Arrangements
 - 6 Transitional Arrangements
 - 7 Financial Implications
 - 8 Community Impact
 - 9 Implications for Staff
 - 10 Equal Opportunities
 - 11 Proposed Date of Implementation
 - 12 Statutory Consultation Process - Proposed Timeline
-
- Appendix 1.1 Proposed Location of new ASC Provision in Strathallan Primary School
 - Appendix 1.2 Existing Primary Catchment areas that Valley ASC supports
 - Appendix 1.3 Balwearie High School Associated Primary Schools
 - Appendix 1.4 Proposed Areas that the new ASC Provision will support
 - Appendix 1.5 Glossary of Terms
 - Appendix 1.6 Consultation Response Form

1 Introduction and Background Information

- 1.1 This consultation paper sets out the rationale and implications in respect of the proposal to establish a new Additional Support Class provision (ASC) within Strathallan Primary School, Kirkcaldy. For the purpose of the proposal the new provision is also described as an enhanced provision.
- 1.2 This paper also sets out the consultation process, the timescale and the ways in which parents/carers and stakeholders can make representations on the proposal.
- 1.3 This proposal does not impact on the ability of Strathallan Primary School to deliver mainstream education to catchment pupils. There will be a reduction in the number of classrooms available for mainstream pupils, however, school roll projections indicate that this will not impact on the number of mainstream education classes required long term with Strathallan Primary School. The proposal does not affect the level of additional support provided to mainstream pupils in Strathallan Primary School or on the delivery of mainstream education within Strathallan Primary School. There is no impact on the enrolment arrangements for catchment mainstream pupils to Strathallan Primary School.
- 1.4 There are no changes proposed to the catchment area of Strathallan Primary School included within this proposal.
- 1.5 There are no proposed changes to the existing catchment areas for both non-denominational or denominational primary and secondary school catchment areas affected by this proposal.
- 1.6 In Fife, the education authority discharges its duty to secure adequate and efficient education for the local authority area by operating a “catchment” system to enable parents/carers to comply with their duty to provide efficient education for their child(ren). Postcodes for each address in Fife are associated to a denominational (Roman Catholic) and non-denominational primary and secondary schools, known as catchment schools. Parents can check their catchment area at [Check school catchment areas | Fife Council](#). School enrolment for mainstream places is managed in Fife through the Schools Admission Policy which can be found at [Schools-Admission-Policy-April-2018.docx \(live.com\)](#).
- 1.7 Currently in Fife most children and young people who have additional support needs have these met within our local, mainstream schools. Some children with specific additional support needs access specialised provision which may or may not be part of their existing mainstream school. These provisions are designed to meet the needs of children and young people who have additional support needs and allow tailoring of the curriculum, specialised resources and staff training/expertise within these specific provisions and within Fife.

1.8 Our vision for children and young people who experience additional support needs (ASNs) is to:

- Support them to have high quality educational experiences in their local early learning and childcare (ELC), primary school and secondary school settings, in line with the presumption of mainstream;
- Provide high quality educational experiences throughout our enhanced support provisions for learners who require individualised learning environments and more intensive support;
- Provide high quality support and professional learning for practitioners and leaders.

1.9 Our current provision across Fife is wide and varied to ensure we can meet the needs of all individual children.

1.10 Our current provision can be described as follows:

- Mainstream – Early, Primary and Secondary

Within mainstream, additional support may be provided to support individuals through targeted support or interventions from school based staff including pupil support assistants, support for learning staff or outreach staff from Support for Learners Service and/or Pupil Support Service.

- Enhanced Provision - Additional Support Classes

Additional Support Classes (enhanced support provision) exist at primary stage to meet the pupils' identified additional support needs where these cannot reasonably be met within the mainstream provision alone. At times individual children are on a shared placement between Additional Support Class and their mainstream school.

- Special Schools

Offers specialist education for learners with complex additional support needs from 3 to 18 years.

1.11 In the primary sector there are currently 8 enhanced provisions (Additional Support Classes) across Fife in Benarty, Buckhaven, Cairneyhill, Canongate, Castlehill, Rimbleton, Pitreavie and Valley Primary Schools.

1.12 In the secondary sector, all of the 18 secondary schools provide a continuum of support: universal, additional and intensive support. This includes Support for Learning teachers and Pupil Support Assistants through to the school's Department of Additional Support (DAS).

1.13 The admissions arrangements for a pupil requiring access to an ASC provision, for nursery, special and primary stages, is managed through an Area Management Group (AMG) process. There are 3 AMGs which meet a number of times a year covering the geographical areas of Central Fife, North & East Fife and West Fife. Professionals from across sectors and services

discuss the most appropriate educational placement for individual pupils regularly throughout the school session. No changes are proposed to these admission arrangements.

- 1.14 Currently there are no children across Fife on a waiting list for a space for an enhanced provision.
- 1.15 The census in September 2023 recorded 26788 primary aged pupils and 22377 number of secondary aged pupils.
- 1.16 The current ASC provision that covers the Kirkcaldy area, located within Valley Primary School has 3 classes to support a maximum of 30 pupils, 2 of these classes are assigned to supporting pupils with additional support needs and the third area is a life skills area. There is no plan to reduce the number of classrooms within Valley Primary School supporting this provision. Based on the pupil roll projections for the Kirkcaldy wide area, a further ASC provision would allow more opportunities for pupil's needs to be met across this geographical area.
- 1.17 The proposed establishment of a new enhanced provision in Strathallan Primary School, will enable local pupils from the Balwearie High School cluster to attend Strathallan Primary School to access an ASC provision. This would not affect the allocation of resources to meet the needs of mainstream pupils.
- 1.18 The proposal to create a new ASC provision will ensure that children requiring this enhanced support provision are being educated in the heart of their communities.
- 1.19 Strathallan Primary School is part of the Balwearie High School cluster.
- 1.20 There will be no impact on the pupils who currently attend their catchment school for part of the week and attend Valley ASC for their placement on a full-time basis. These placements may continue until transition to high school. However, if the team around the child and the child's parents/carers agree that a change of placement to the new provision would be of benefit, then transition would be well planned to meet the needs of the child.

2 The Proposal

- 2.1 This proposal is to establish a new ASC provision in Strathallan Primary School (see Appendix 1.1) from Monday 18 August 2025.
- 2.2 In line with the vision outlined in Building Fife's Future: School Estate Strategy (28 August 2018) and supported by the Scottish Government's Learning Estate Strategy: Connecting People, Places and Learning (2019), the proposed new ASC provision within Strathallan Primary School will provide enhanced facilities in modern and flexible learning spaces to allow pupils to experience a wide-ranging curriculum offer, appropriate to their needs.
- 2.3 Financial investment will be required within Strathallan Primary School to establish this new enhanced provision. The planned occupation date is from

Monday 18 August 2025. Further information on the financial implications of the proposal is contained in Part 7 of this document.

- 2.4 The proposed maximum capacity of this provision within Strathallan Primary School will be 20 full-time spaces for children.
- 2.5 Appendix 1.1 shows the proposed location within Strathallan Primary School for the new enhanced provision. Appendix 1.2 shows a map of the existing Primary Catchment areas which Valley Primary School ASC supports. Appendix 1.3 identifies the primary school catchment areas associated with Balwearie High School. Appendix 1.4 shows a map of the primary school catchment areas that the proposed new enhanced provision would support. Appendix 1.5 is a glossary of terms detailing additional information. Appendix 1.6 is the Consultation Response Form, which can be accessed online [here](http://www.fife.gov.uk/StrathallanASCestablishment) (<http://www.fife.gov.uk/StrathallanASCestablishment>) from Tuesday 7 January 2025 and will, thereafter, run until close of business on Friday 21 February 2025.

3 **Rationale for the Proposal - The Case for the Establishment of a New Provision within Strathallan Primary School**

- 3.1 The main driver for the establishment of a new enhanced provision to serve the Kirkcaldy West area, is based on the current and projected number of pupils requiring this enhanced support provision across this area.
- 3.2 The Education Directorate carried out a review of the number of ASC provisions across Fife to ascertain:
 - (a) the number of current pupils with additional support needs (ASN) across Fife requiring enhanced support within an additional support class (ASC) provision
 - (b) the locality of the current ASC provision, and
 - (c) the projected number of pupils who could require this provision in the next 10 years.

The review took into account the number of enhanced provisions across Fife and the projected increase in enhanced places required across Fife, in accordance with pupils expected from new strategic development areas and future school roll projections. The review also considered whether the existing 8 enhanced provisions were located in the most appropriate geographical locations across Fife. Based on this review, it has been highlighted that there are insufficient places available in enhanced provisions having regard to the pupil roll in the Dunfermline and South West Fife Area and in the Kirkcaldy area.

Reviewing the proposed new housing across the Kirkcaldy area, there are approximately 2800 new homes to be constructed in due course in this area of Fife.

The establishment of this new ASC provision within Strathallan Primary School will allow children to attend an enhanced provision within their locality

and may reduce the need for transportation across the Kirkcaldy area.

Strathallan Primary School building was opened in January 2007. The building is on one level, fully accessible throughout, with accommodation comprising nursery and primary classrooms. The school benefits from large extensive grounds for pupils to enhance their outdoor learning opportunities. In addition, there is an Out of School club within the school which offers childcare for parents/carers after school.

Reconfiguration of the school will be required to accommodate the enhanced provision within Strathallan Primary School. This may require the infant classes to move to another area of the school.

The classrooms that will accommodate pupils in the proposed enhanced provision would not be included in the maximum capacity calculation of the school. If the proposal is approved the maximum capacity of the school would change from 434 pupils (14 classes) to 317 pupils (11 classes). Two classrooms will be allocated to the new provision. The third classroom in this area will still be available for wider use by the school.

The projected school roll of Strathallan Primary School indicates that no more than 11 classes are required long term. The reduction in capacity for mainstream classes to create this provision will not impact on the number of multi-purpose areas within the school. Mainstream pupils will still have access to the dining hall and gym hall, and there are sufficient multi-purpose areas across the school for all existing and new users.

A separate external entrance to the ASC provision will ensure the dignity of each individual and their cloakroom area will be quiet and only for their use, allowing for a quiet transition into the classrooms. As the grounds are very expansive, there is an opportunity for access to the wider school playground, allowing for easy integration with the whole pupil group as appropriate.

The proposed accommodation allows flexibility for pupils to retreat to quiet spaces and will be further enhanced with dedicated outdoor learning provision to ensure learning can be creative both indoors and outdoors. The building will be able to deliver the curriculum to ensure the best possible educational experiences and outcomes for our children. The available classrooms to support this provision can be separated from the other areas of the school. This allows a more supportive learning facility for our learners to enable a more secure and peaceful environment. Access to the wider school environment will be planned for and responsive to the needs of the individual pupils, and staff will be able to support pupils to achieve this in a safe and structured way.

Well planned and designed accommodation will ensure the varying needs of all children can be supported throughout the new provision. As well as generous classroom spaces designed to assist the delivery of different curricular areas, direct access to an enclosed outdoor area will allow the pupils to enhance their learning experience. All of the existing classrooms have height adjustable sinks. Both of the classrooms will be able to be

accessed by any pupils with a physical disability.

Adaptations to the existing accessible toilet with changing facilities will be required to comply with current legislation.

The creation of the proposed enhanced provision will complement the existing nursery and mainstream stream provision within Strathallan Primary School. The transition for any pupil requiring this enhanced provision will be well planned and agreed within the team around the child.

3.3 School Roll Information – Strathallan Primary School

3.3.1 The maximum capacity of the school, as reported within the Core Facts return to the Scottish Government in May 2024, was 434 pupils (14 classes). The school roll recorded for Census 2023 was 281 pupils (65% occupied), within 11 classes. For session 2024/25, the school are operating with 11 classes, a total roll of 281 pupils, 65% occupied.

3.3.2 School roll projections are reviewed on an annual basis and consider any proposed development from the Local Development Plan ([Local development plan \(FIFEplan\) | Fife Council](#)) or any brownfield opportunity sites that may come forward.

	2024	2025	2026	2027	2028	2029	2030	2031	2032	2033	2034
Roll	245	236	207	185	168	155	152	152	145	145	147
Classes	11	10	9	9	8	8	7	8	7	7	7

3.3.3 As outlined below, school roll projections for the next 10 years are as follows:

The above school roll projections for Strathallan Primary School take into account the births in the catchment area, the primary one enrolment trends and any new pupils expected from the housing developments in the Strathallan Primary School catchment area. There are no large scale housing developments expected within the Strathallan Primary School catchment area.

Building Condition and Suitability Ratings

The Education Directorate's ambition is that every school in Fife should be rated as 'A' or 'B' for both condition and suitability, to include a number of accessible schools in each geographical area.

The Scottish Government Core Facts return requires local authorities to provide a condition and suitability return each year. Condition ratings are scored 'A' to 'D' with A being the highest rating – Good - performing well and operating efficiently and D being lowest rating – Bad - Life expired and/or serious risk of imminent failure.

The latest return in May 2024 reported the current condition rating for Strathallan Primary School is rated as "A", which is classed as good.

- 3.3.4 Suitability ratings are scored 'A' to 'D' with 'A' being the highest rating - Good – performing well and operating efficiently (the school buildings support the delivery of services to children and communities) and 'D' being the lowest rating - Bad – does not support the delivery of services to children and communities (the school buildings seriously impede the delivery of activities that are needed for children and communities in the school).

The latest return in May 2024 reported the current suitability rating is "A", which is classed as good.

Accessibility Rating

Accessibility ratings are scored 'A' to 'D' with 'A' being the highest rating (as the building is fully accessible) and 'D' being the lowest rating (as the building is inaccessible and unable to be reasonably adapted to be made accessible).

The accessibility rating for Strathallan Primary School is "A", the building is fully accessible.

4 Educational Benefits Statement

- 4.1 The Schools (Consultation) (Scotland) Act 2010 provides that where an education authority has formulated a relevant proposal in relation to any school, it must comply with the requirements of the Act before proceeding with the proposal. The education authority must prepare an educational benefits statement which includes:

- (a) the authority's assessment of the likely effects of a relevant proposal (if implemented) on:
 - (i) the pupils of any affected school,
 - (ii) any other users of the school's facilities,
 - (iii) any children who would (in the future but for implementation) be likely to become pupils of the school,
 - (iv) the pupils of any other schools in the authority's area,
- (b) the authority's assessment of any other likely effects of the proposal (if implemented),
- (c) an explanation of how the authority intends to minimise or avoid any adverse effects that may arise from the proposal (if implemented),
- (d) a description of the benefits which the authority believes will result from implementation of the proposal (with reference to the persons whom it believes will derive them).

4.2 The authority's assessment of the likely effects of this proposal (if implemented) on:

4.2.1 (i) The pupils of any affected school

4.2.1.1 Educational Benefits for the pupils of Strathallan Primary School

- 4.2.1.2 The mainstream provision and allocation of resources will not be affected by the establishment of this enhanced provision. Mainstream pupils will still have access to targeted interventions, Pupil Support Assistants and Support for Learning Teacher to ensure their needs are met effectively.
- 4.2.1.3 Children within the locality who do require access to an enhanced provision can attend a provision within the heart of their own community. This would include children who currently have a shared placement between mainstream school and an enhanced provision.
- 4.2.1.4 The creation of an enhanced provision within Strathallan Primary School supports the understanding of inclusive education. It will provide opportunities for children and the community to appreciate diversity and to recognise and value the strength and potential in everyone. This mutual understanding creates a culture of acceptance and reduces the stigma often associated with learning disabilities.
- 4.2.1.5 Interacting with peers of diverse abilities encourages meaningful friendships, team building and co-operation. By embracing inclusion, schools create an atmosphere which celebrates differences and encourages mutual respect between pupils.
- 4.2.1.6 Indoor and outdoor learning spaces will be designed to be used flexibly and creatively across the whole school to support the wellbeing of all learners.
- 4.2.1.7 The needs of children requiring access to an enhanced support provision for all or part of their learning, will be accommodated in well considered accessible facilities that will support them from their arrival on site, throughout the day, in formal learning and in informal social times.
- 4.2.1.8 Creative and inviting learning spaces will support additional opportunities for children to learn collaboratively in all curricular areas, taking account of the skills they require for learning, life and work. Opportunities for integration into the wider school community will be promoted and offered where appropriate, ensuring the children feel part of the Strathallan Primary School community.
- 4.2.1.9 The creation of this new enhanced provision would also support the occupancy of a primary school with a long-term declining school roll.

4.2.2 (ii) Any other users of the school's facilities

4.2.2.1 Educational Benefits for any other users of the schools' facilities

- 4.2.2.2 The enhanced provision will be an additional resource with indoor and outdoor spaces which could be of a benefit to other school users within the Strathallan Community such as the out of school provision.
- 4.2.2.3 An inclusive physical environment with accessible entrance and accessible toilet and changing area will form part of the provisions which could support other school events.

4.2.3 (iii) Any children who would (in the future but for implementation) be likely to become pupils of the school

4.2.3.1 Educational Benefits for children who would likely to become pupils of the school

4.2.3.2 Children within the Balwearie High School cluster will be able to access an enhanced provision within the geographical area. This will support transitions to secondary school as part of the continuum of support.

4.2.4 (iv) the pupils of any other schools in the authority's area

4.2.4.1 Educational Benefits for pupils of any other schools in the authority area

4.2.4.2 Current pupils within an enhanced provision either attend full time or have a shared placement with their local primary school. There will be no impact on the pupils who currently attend their catchment school for part of the week and attend Valley Primary School for their placement. These placements will continue until transition to high school. However, if the team around the child and the child's parents/carers agree that a change of placement to the new provision would be of benefit, then transition would be well planned to meet the needs of the child.

4.2.4.3 This enhanced provision will allow pupils from the Balwearie High School cluster to be located in closer proximity to their mainstream catchment school. These pupils will be able to transition to secondary school with their peers.

4.2.5 There will be clear locality boundaries for enhanced provisions that are equitable and associated with existing secondary school catchment areas.

4.3 The authority's assessment of any other likely effects of the proposal (if implemented)

4.3.1 At present, all pupils are transported to and from their home or mainstream catchment school to the enhanced provision at Valley Primary School. With the establishment of enhanced provision within a local area, there should be a reduction in the need for transport for individual children.

4.4 How the Authority intends to minimise or avoid any adverse effect that may arise from the proposal (if implemented)

4.4.1 Prior to any move to a new provision, the transition of pupils from one school to another would be well planned by the team around the child. This would be reviewed as part of the planning for individual children.

4.5 Benefits which the authority believes will result from implementation of the proposal (with reference to the persons whom it believes will derive them)

4.5.1 Children with additional support needs from the Kirkcaldy West locality can access an enhanced provision within the geographical area and this will allow

them to transition to their catchment secondary school with their peers.

4.5.2 The proposal will provide opportunities for children and the community to appreciate diversity and to recognise and value the strength and potential in everyone. This mutual understanding creates a culture of acceptance and reduces the stigma often associated with learning disabilities.

4.5.3 In time, there will be a reduction in transport being required for a number of pupils accessing this provision.

4.5.4 This proposal can be implemented within Strathallan Primary School with no negative impact on mainstream provision for catchment pupils.

5 Transport Arrangements

5.1 Where identified by the team around the child, transport can be provided for children to the enhanced provision and their mainstream primary school. Any transport arrangements will be regularly reviewed with this team.

6 Transitional Arrangements

6.1 All transitions will be well planned to ensure positive experiences for all children. Individual pupil plans will allow for an enhanced transition for those pupils who would be accessing the new provision within Strathallan Primary School before August 2025.

1 Financial Implications

1.1 There will be capital costs associated with the proposed establishment of a new ASC provision within Strathallan Primary School. Detailed drawings and costs are currently being prepared by Property Services and it is expected the project can be delivered during the summer holidays 2025 through to October 2025. The final costs of the proposed works will not be available until the consultation is underway. Indicative costs, based on other similar projects, are in the region of approximately £80,000 for Strathallan Primary School. These works are required to enable legislative standards to be adopted. With the addition of Strathallan Primary School, the transport costs to Valley Primary School should reduce in due course. Existing staffing from current provisions will be redeployed to support children and their families within the new provisions.

2 Community Impact

2.1 There is likely to be no significant impact on the local communities associated within the creation of a new ASC provision in Strathallan Primary School.

2.2 This proposal is likely to create a positive impact on the school community where a new provision will support a declining school roll. As outlined in the Educational Benefits section, children within the Balwearie High School cluster will be able to access an enhanced provision within the heart of their

community. The proposal will also provide opportunities for children and the community to appreciate diversity and to recognise and value the strength and potential in everyone.

3 Implications for staff

3.1 If the proposal is approved, the provision will be staffed accordingly with both teachers and support staff for the number of pupils that are expected for August 2025 by the local authority. There will be no impact on mainstream staffing numbers as a result of the proposed new provision.

3.2 This consultation is open to all staff and Trade Unions representatives to provide their feedback to the proposal itself.

4 Equal Opportunities

4.1 An Equality Impact Assessment (EIA) is a statutory requirement of the Council to assess the policies and practices necessary to meet the requirements of antidiscrimination and equalities legislation. It also affords an opportunity for the Council to consider the impact on the Education Directorate. In addition, an EIA can provide more information to develop and deliver services that meet the needs, in this case, of children and parents.

4.2 The aim of an EIA is to examine policies and practice in a structured way, to make sure that adverse effects on equality target groups are avoided. It is also a tool to enable the Council to assess what positive steps it can take to promote equality of opportunity and measure the results of the actions that have been taken.

4.3 As part of the consultation process the Council will consult with a range of stakeholders, including staff, parents/carers and children, and will address comments about equality during this consultation. The Impact Assessment will be included in the Final Consultation Report, expected in May 2025.

4.4 Under the Equality Act 2010 education providers must not treat disabled pupils less favourably and should take reasonable steps to avoid putting disabled pupils at a substantial disadvantage.

4.5 Careful transition planning will ensure positive transition to the proposed new provision. Individual pupil plans will allow for an enhanced transition.

4.6 As outlined previously, the proposal seeks to provide 2 teaching areas and associated accommodation and will be accessible to ensure that all building users are able to move around the building with ease. This will have a positive impact on any pupil with accessibility issues.

5 Proposed Date for Implementation

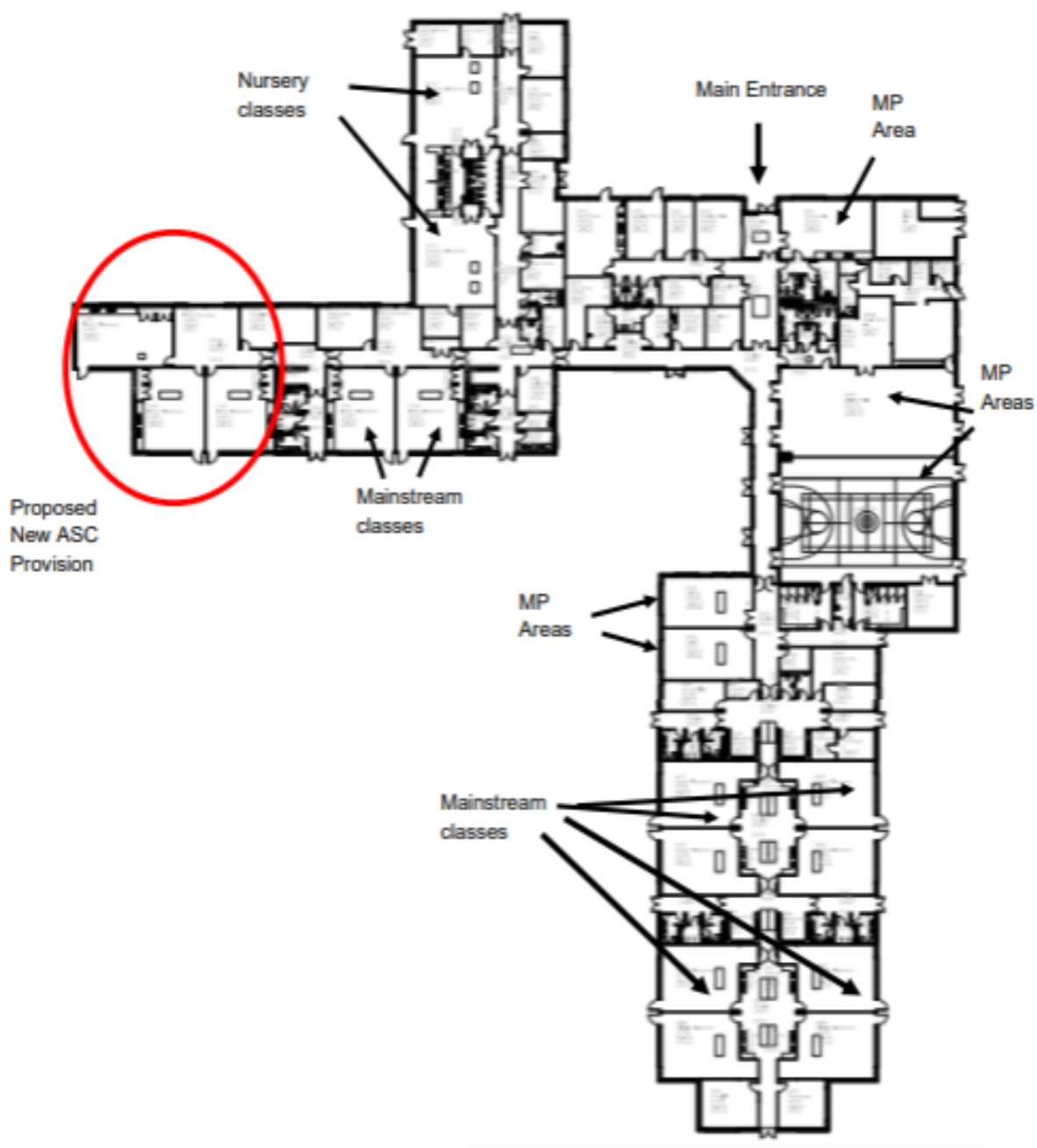
5.1 If this proposal is approved, the Education Directorate plans for the implementation of the new provision from Monday 18 August 2025.

12 Statutory Consultation Process – Proposed Timeline

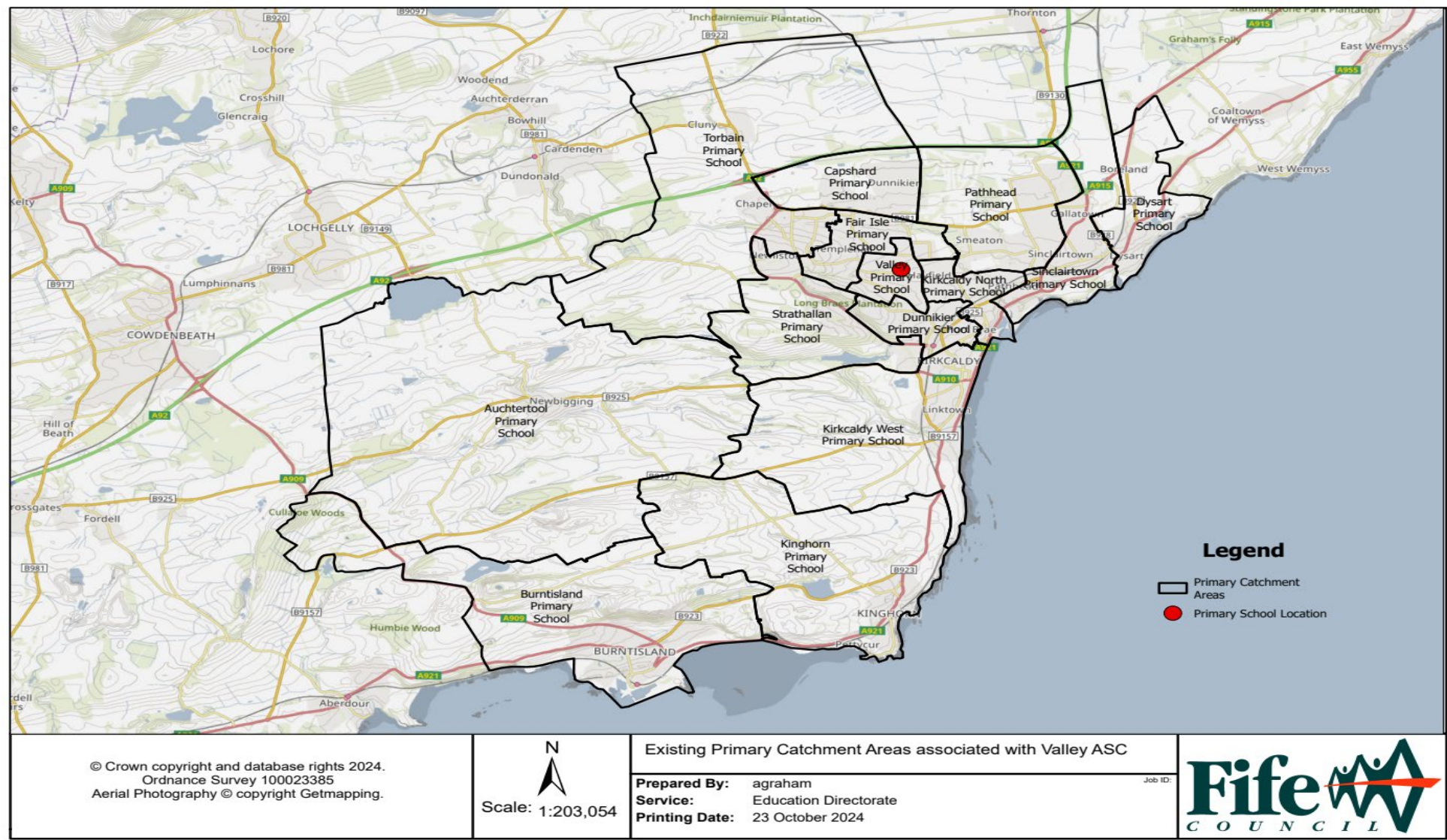
Thursday 5 December	Consultation proposal considered by Cabinet Committee
Monday 6 January	Parents and other statutory consultees to receive letters informing them of the dates for the statutory consultation.
Tuesday 7 January	Consultation live Tuesday 7 January to Friday 21 February
Tuesday 7 January – Friday 21 February	Consultation period (31 school days)
Meetings	<p>Public meeting Wednesday 29 January 2025 at 6-7 pm at Strathallan Primary School</p> <p>Drop-in sessions Wednesday 29 January 2025 at Strathallan Primary School at 8.45-9.30 am, 2.45-3.30 pm and 5-6 pm before the public meeting</p>
Friday 21 February	Consultation close
Friday 28 February	Fife Council to submit information to Education Scotland
Monday 3 March – Friday 21 March	Education Scotland (3 weeks to visit the school, review the proposal document and responses and write their report)
Monday 24 March	Report received back from Education Scotland
Monday 7 April – Friday 18 April	Sign off report from Education Scotland
Tuesday 6 May 2025	Publish Consultation Report, in conjunction with Education Scotland (clear 3 weeks before committee is due to take decision)
Thursday 29 May 2025	Cabinet Committee to discuss Final Consultation Report and make decision.

<p>The information included in this document can be made available in large print, braille, audio CD/tape and British Sign Language interpretation on request by calling 03451 55 55 00</p> <p>Calls cost between 3p to 7p per minute from a UK landline, mobile rates may vary.</p> <p>BT Text phone number for Deaf people 18001 01383 441177</p>
<p>LANGUAGE LINES</p>
<p>এ নথিতে যেসব তথ্য আছে তা 03451555599 এ নাম্বারে ফোন করে অনুরোধ করলে বড় ছাপা, ব্রেইল, ওডিও সিডি/ট্যেপ ও ব্রিটিশ সাইন ল্যাংগুয়েজ ইত্যাদি মাধ্যমে পাওয়া যাবে।</p> <p>কলের জন্য ইউকে ল্যান্ডলাইন থেকে খরচ হবে প্রতি মিনিটে ৩পি থেকে ৭পি, মোবাইলের খরচ ভিন্ন হতে পারে।</p>
<p>عند الطلب، يمكن توفير المعلومات الواردة في هذا المستند في صورة مستندات مطبوعة بأحرف كبيرة ومستندات بطريقة برايل وعلى أشرطة/أقراص مضغوطة صوتية مع الترجمة بلغة الإشارة البريطانية من خلال الاتصال بالرقم 03451 55 55 77</p> <p>تتراوح تكلفة المكالمات بين 3 إلى 7 بنسات في الدقيقة من أي خط أرضي في المملكة المتحدة، وقد تختلف أسعار المكالمات بالهاتف المحمول.</p>
<p>如果你需要以大字體印刷、盲人點字、光碟/錄音帶格式或英國手語傳譯說明這份文件的內容，請致電 03451 55 55 88 提出要求。</p> <p>用英國電訊固定座機撥打上述電話號碼收費每分鐘 3 至 7 便士，以手機撥打收費各異。</p>
<p>Informacje zawarte w tym dokumencie mogą zostać udostępnione w wersji drukowanej dużą czcionką, w alfabecie Braille'a, w wersji dźwiękowej na płycie CD/taśmie lub w tłumaczeniu na brytyjski język migowy – prosimy o kontakt pod numerem 03451 55 55 44.</p> <p>Koszt połączenia wynosi 3-7p za minutę z brytyjskich telefonów stacjonarnych, koszty połączeń z telefonów komórkowych mogą być różne.</p>
<p>ਇਸ ਦਸਤਾਵੇਜ਼ ਵਿਚਲੀ ਜਾਣਕਾਰੀ ਟੈਲੀਫੋਨ ਨੰਬਰ 03451 55 55 66 ਰਾਹੀਂ ਮੰਗ ਕਰਨ ਉੱਤੇ ਵੱਡੇ ਅੱਖਰਾਂ, ਬ੍ਰੇਅਲ, ਆਡੀਓ ਸੀ.ਡੀ./ਟੇਪ ਅਤੇ ਬ੍ਰਿਟਿਸ਼ ਸਾਈਨ ਲੈਂਗੂਏਜ ਦੇ ਅਨੁਵਾਦ ਵਿਚ ਮੁਹੱਈਆ ਕਰਾਈ ਜਾ ਸਕਦੀ ਹੈ।</p> <p>ਯੂ.ਕੇ. ਲੈਂਡਲਾਈਨ ਰਾਹੀਂ ਕਾਲ ਕਰਨ ਦਾ ਖਰਚਾ 3 ਤੋਂ 7 ਪੈਨੀਆਂ ਪ੍ਰਤੀ ਮਿੰਟ ਹੋਵੇਗਾ, ਮੋਬਾਈਲਾਂ ਦੇ ਰੇਟ ਵੱਖਰੇ ਵੱਖਰੇ ਹੋ ਸਕਦੇ ਹਨ।</p>
<p>03451 55 55 66 پر درخواست کرنے سے اس تحریر میں دی گئی معلومات بڑے پرنٹ 'بریل' آڈیو سی ڈی/ٹیپ پر اور ترجمانی والی برطانوی اشاراتی زبان (برٹش سائن لینگویج) میں مہیا کی جاسکتی ہیں۔</p> <p>کسی برطانوی لینڈ لائن سے فون کے نرخ 3 تا 7 پنس فی منٹ ہیں' موبائل کے نرخ مختلف ہوسکتے ہیں۔</p>

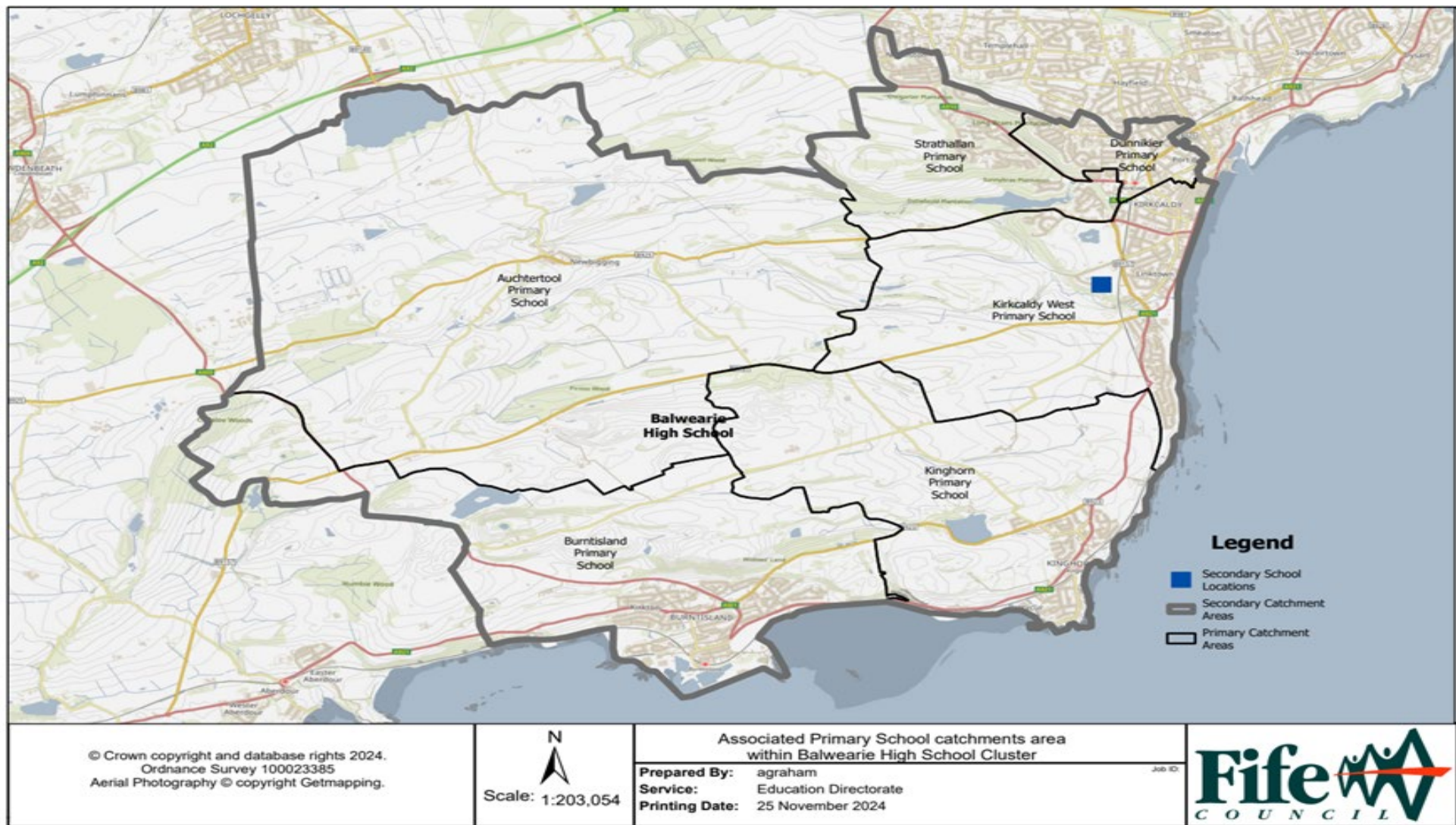
Appendix 1.1 – Proposed Location of new ASC Provision in Strathallan Primary School



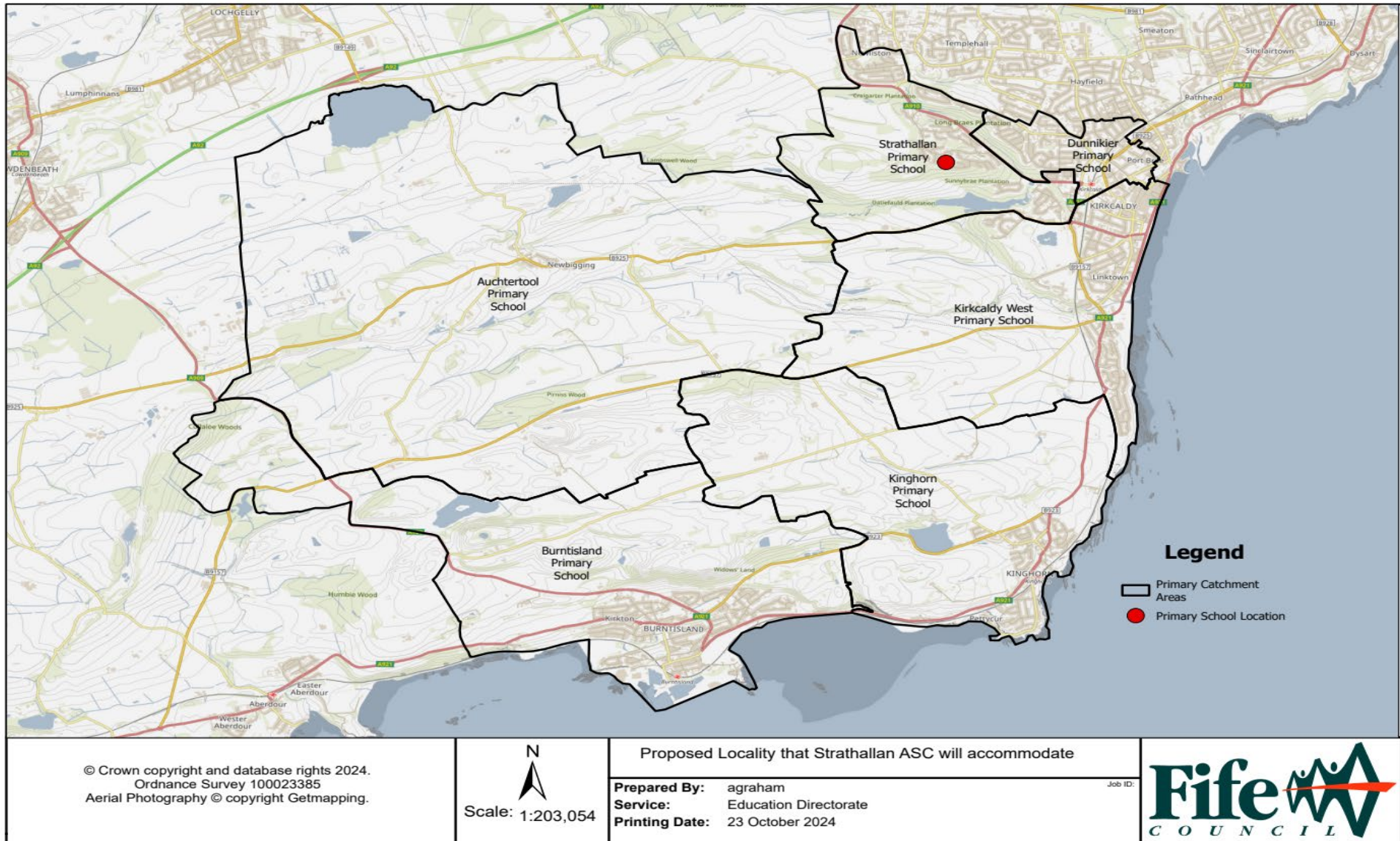
Appendix 1.2 – Existing Primary Catchment areas that Valley ASC supports



Appendix 1.3 – Balwearie High School Associated Primary Schools



Appendix 1.4 - Proposed Areas that the new ASC Provision will support



Appendix 1.5 - Glossary of Terms

Core Facts

Core Facts are a series of data which are collected by local authorities to measure progress and success of a school estate strategy as well as benchmarking against other local authorities in Scotland. The core facts are used at both local and national level to:

- establish a baseline
- inform targets
- inform spending decisions
- support monitoring and evaluation of progress over time
- support assessments of value for money.

More information is available at: [School estates: core facts overview - gov.scot \(www.gov.scot\)](http://www.gov.scot/resources/documents/2014/06/School_estates_core_facts_overview.pdf)

School Condition Rating

Condition core facts are established by professional review, carried out by the Council's Asset & Facilities Management Service. Schools are assessed against a range of criteria set down by the Scottish Government and are examined on a 5-year rolling programme.

- A: Good – Performing well and operating efficiently
- B: Satisfactory – Performing adequately but showing minor deterioration
- C: Poor – Showing major defects and/or not operating adequately
- D: Bad – Life expired and/or serious risk of imminent failure.

School Suitability Rating

Suitability core facts are established through a similar process to the condition core facts process, undertaken by Headteacher and Business Managers. This information assesses how well the school environment supports the delivery of the curriculum against criteria laid down by the Scottish Government.

- A: Good – Performing well and operating efficiently (the school buildings support the delivery of services to children and communities)
- B: Satisfactory – Performing well but with minor problems (the school buildings generally support the delivery of services to children and communities)
- C: Poor – Showing major problems and/or not operating optimally (the school buildings impede the delivery of activities that are needed for children and communities in the school)
- D: Bad – Does not support the delivery of services to children and communities (the school buildings seriously impede the delivery of activities that are needed for children and communities in the school).

Suitability surveys are reviewed by Headteachers/Business Managers every 5 years. Where school investment has been carried out in a particular school, the following year's Core Facts Update will be amended to reflect any subsequent change to the condition, suitability or accessibility rating.

School Accessibility Rating

Accessibility ratings are collated by the School Estate Team, along with the Education Access Officer, who undertake surveys of all the school buildings. These ratings are then ratified by the Accessibility Strategy Group. The ratings are classified as follows:

- A: Fully accessible
- B: Building partially accessible but Curriculum accessible
- C: Partially accessible or not currently accessible but has the potential to be made accessible
- D: Inaccessible and unable to be reasonably adapted to be made accessible.

As part of the Accessibility Strategy, there will be a number of accessible schools in each geographical area.

Strategic Development Areas

Strategic Development Areas are housing developments sites within Fife identified through Fife Council's Structure Plan 2006-2026 (approved May 2009). The Structure Plan also includes infrastructure

developments for business and employment, town centres, retailing, housing, affordable housing, transportation and waste management. A Strategic Development Area for residential units range from 300 units in a small town/village to 4200 units in a large town.

Local Development Plan

Fife Council adopted FIFEplan (Fife's Local Development Plan) on 21 September 2017. This plan details the local development changes to infrastructure within settlements and include new plans with planning consent. The Council are currently inviting communities to create Local Place Plans, which will help shape the next Local Development Plan. More information is available at [Invitation to create Local Place Plans](#) page.

Housing Land Audit

Enterprise, Planning & Protective Services undertakes an annual audit (known as the Housing Land Audit) of the Housing Land Supply in Fife, using 1st April as the base date. The Audit monitors housing completions and makes predictions about future house building in Fife.

Homes for Scotland (representing the national house builders) and local developers are consulted on the information to be included in the Housing Land Audit to discuss and agree the Audit as far as possible. The latest publication for 2021 is published at [Planning Information and Land Use Audits | Fife Council](#)

Public Private Partnership (PPP)

There are 2 existing contracts in Fife (PPP1 and PPP2) where schools have been procured and constructed through this process. The schools are maintained for a period of 25 years by a contractor and after 25 years the building is handed to the Council for future repair and maintenance. An annual unitary charge includes design and construction, services delivery including building and grounds maintenance, finance costs, legal, insurances, management and risk.

Life Cycle Costs

Costs for replacing assets at the end of their life span. These include building, fabric, services and furniture and equipment to ensure the asset is maintain is a substantial condition.

Efficiency Range 80-100%

No local authority can effectively run at 100% occupied. The 80%-100% efficiency range allows a degree of flexibility within schools to support Curriculum for Excellence.

Cost per Pupil Calculation

The cost per pupil calculation for schools is computed in July of each year. The calculation is intended to bring together all comparable costs for each school and benchmark these at individual school level through the production of a cost per pupil figure.

The calculation is currently based on the School Revenue Budget Statements that are issued to schools in April of each year. The calculation takes into account a number of factors particularly the school roll from the last census at September of the previous year. The calculation takes schools running costs including an allocation for janitorial staffing costs. It excludes the costs for school transport, depreciation and the financing costs of schools built under PFI contract arrangements (PPP schools).

Having identified the relevant running costs for each school and by dividing these costs by the school roll this produces a cost per pupil figure which is used for comparison purposes.

Proposal Paper

The Schools (Consultation) (Scotland) Act 2010 provides that where an education authority has formulated a relevant proposal in relation to any school, it must comply with the requirements of the Act before proceeding with the proposal. One of the requirements is that it must prepare and publish a proposal paper. Section 4 of the Act provides:

4 Proposal paper

- (1) The education authority must prepare a proposal paper which—
 - (a) sets out the details of the relevant proposal,
 - (b) proposes a date for implementation of the proposal,
 - (c) contains the educational benefits statement in respect of the proposal,

- (d) refers to such evidence or other information in support of (or otherwise relevant in relation to) the proposal as the education authority considers appropriate.
- (2) The proposal paper must also give a summary of the process provided for in [sections 1 to 17D] (so far as applicable in relation to the proposal).
 - (2A) Where a proposal paper relates to a closure proposal, it must also contain information about the financial implications of the proposal.
- (3) A proposal paper may include more than one proposal.
- (4) The education authority must—
 - (a) publish the proposal paper in both electronic and printed form,
 - (b) make the paper, and (so far as practicable) a copy of any separate documentation that it refers to under subsection (1)(d), available for inspection at all reasonable times and without charge—
 - (i) at its head office and on its website,
 - (ii) at any affected school or at a public library or some other suitable place within the vicinity of the school,
 - (c) provide without charge the information contained in the proposal paper—
 - (i) to such persons as may reasonably require that information in another form, and
 - (ii) in such other form as may reasonably be requested by such persons.
- (5) The education authority must advertise the publication of the proposal paper by such means as it considers appropriate.

Educational Benefits Statement

The Schools (Consultation) (Scotland) Act 2010 provides that where an education authority has formulated a relevant proposal in relation to any school, it must comply with the requirements of the Act before proceeding with the proposal. One of the requirements is that it must prepare an educational benefits statement. Section 3 of the Act provides:

3 Educational benefits statement

- (1) The education authority must prepare an educational benefits statement which includes:
 - (a) the authority's assessment of the likely effects of a relevant proposal (if implemented) on:
 - (i) the pupils of any affected school,
 - (ii) any other users of the school's facilities,
 - (iii) any children who would (in the future but for implementation) be likely to become pupils of the school,
 - (iv) the pupils of any other schools in the authority's area,
 - (b) the authority's assessment of any other likely effects of the proposal (if implemented),
 - (c) an explanation of how the authority intends to minimise or avoid any adverse effects that may arise from the proposal (if implemented),
 - (d) a description of the benefits which the authority believes will result from implementation of the proposal (with reference to the persons whom it believes will derive them).
- (2) The statement must also include the education authority's reasons for coming to the beliefs expressed under subsection (1)(d).
- (3) In subsection (1), the references to effects and benefits are to educational effects and benefits.

**FIFE COUNCIL – EDUCATION DIRECTORATE
CONSULTATION RESPONSE FORM**

Proposal to establish a new Additional Support Class (ASC) within Strathallan Primary School, Strathallan Drive, Kirkcaldy from 18 August 2025.

<https://forms.office.com/e/saCkTnM8f2>

Section 1 - Your Details (to be provided by parent/carers or interested parties to enable the local authority to inform any person who makes written representations on the proposal of the publication of the consultation report as required by the Schools (Consultation) (Scotland) Act 2010).

Name	
Address	
Postcode	
Email address	

Section 2 - What is your main interest in responding to this consultation?

(If you are a parent and a member of staff at one of the impacted schools, please choose either parent/carer or member of staff)

I am a <u>parent/carer</u> of a child attending:	✓
Strathallan Primary School	
Valley Primary School ASC provision	
A primary school in the Balwearie HS cluster	
A nursery in the Balwearie HS cluster	

or

I am a <u>pupil</u> attending	✓
Strathallan Primary School	
Valley Primary School ASC provision	

or

I am a <u>member of staff</u> at:	✓
Strathallan Primary School	
Valley Primary School ASC provision	
A primary school in the Balwearie HS cluster	
A nursery in the Balwearie HS cluster	

or **Other Interested party:**

I am an <u>other interested party:</u>	✓
Grandparent	
Member of Community Council	
Resident in the community	
Other Please explain if you are responding on behalf of an organisation or other reason	

Section 3 - Your Views

Question 3.1

Do you support the proposal to establish a new Additional Support Class (ASC) within Strathallan Primary School, Strathallan Drive, Kirkcaldy from 18 August 2025? **(Please choose one ✓)**

YES		NO		DON'T KNOW	
-----	--	----	--	------------	--

a. If NO, what are your reasons?

b. Are there any further comments on the proposal you would like to make?

Section 4 - About You

The following questions are **voluntary**. They are to assist Fife Council in fulfilling its obligations under the Equality Act 2010 in relation to the proposal. Your responses to these questions are confidential.

1. What is your age? **Please choose one (✓).**

18 or under		25-34		45-54		65-74	
19-24		35-44		55-64		75 and over	

2. What is your gender? **Please choose one (✓).**

Male		Female		Non-Binary		Prefer not to say	
------	--	--------	--	------------	--	-------------------	--

3. What is your ethnic background? **Please choose one (✓).**

White Scottish		African	
Other White British		Asian, Asian Scottish, or other Asian British	
Other White background		Caribbean or Black	
Mixed or multiple ethnic background		Other ethnic background	

1. Do you consider yourself as having a disability? **Please choose one (✓).**

YES		NO	
-----	--	----	--

Thank you for taking part in this consultation. For further information on how we use your data please visit: www.fife.gov.uk/privacy/education

Please complete online at <http://www.fife.gov.uk/StrathallanASCestablishment> or return this form by post to: Proposal to establish New ASC Provision within Strathallan Primary School, Education

Directorate, Fife Council, 4th Floor (West), Fife House, North Street, Glenrothes, KY7 5LT **by close of business on Friday 21 February 2025.**

**Appendix B:
Notice of Consultation Letter**



For the attention of:

The Parent Council or Combined Parent Council
of any affected school
The parents of the pupils at any affected school
The parents of any children expected by the
education authority to attend any affected school
within 2 years of the date of publication of the
proposal paper
The pupils at any affected school (in so far as the
education authority considers them of suitable
age and maturity)
The staff (teaching and other) at any affected
school
Trade union representatives of the above staff
The Community Councils for the affected area
The Community Planning Partnerships for the
relevant area of the local authority
Any other Community Planning Partnership the
education authority considers relevant
Any other education authority that the education
authority considers relevant
Any other users of any affected school that
the education authority considers relevant -
Community Users of Strathallan Primary
School
Elected members for the area
MSPs for the area
The Constituency MP

Education Directorate

Jackie Funnell

03451 555555 ext. 444204

jackie.funnell@fife.gov.uk

Our Ref: JF/KL/StrathallanPS

Date: 6 January 2025

Dear Sir/Madam

**Statutory Consultation Notice - Proposal to Establish a New Stage of Education in a School, Being New Additional Support Class (ASC) Provision Within Strathallan Primary School, Kirkcaldy
Schools (Consultation) Scotland) Act 2010**

On 5 December 2024, the Cabinet Committee of Fife Council authorised the Education Directorate to undertake a statutory consultation in terms of the Schools (Consultation) (Scotland) Act 2010 on the proposal to establish a new stage of education, being new additional support class (ASC) provision within Strathallan Primary School, Strathallan Drive, Kirkcaldy, KY2 5YP from Monday 18 August 2025. A floor plan showing the proposed location of the ASC provision is enclosed.

A full copy of the proposal and the Consultation Response Form (referred to below) can be accessed at <http://www.fife.gov.uk/StrathallanASCestablishment>. A copy of the proposal document is also available for inspection at, and printed copies are available from:

Main Reception, Fife Council, Fife House, North Street, Glenrothes, KY7 5LT
The schools affected by the proposal (between the hours of 9 am and 3 pm)
Strathallan Primary School, Strathallan Drive, Kirkcaldy KY2 5YP
Online at <http://www.fife.gov.uk/StrathallanASCestablishment>
or via email to sustainableschoolestate.enquiries@fife.gov.uk.

The proposal can also be made available in other languages and formats, free of charge, on request, by contacting the Education Directorate on 03451 555555 ext. 444331 or by email to sustainableschoolestate.enquiries@fife.gov.uk.

The statutory consultation period will commence on Tuesday 7 January 2025 and will, thereafter, run until close of business on Friday 21 February 2025.

A public meeting has been arranged at:

Strathallan Primary School on Wednesday 29 January 2025 from 6.00-7.00 pm

At this meeting, council officers will give a presentation on the proposal, answer questions on it and record the oral representations of anyone who attends. Consultation Response Forms will also be available for completion.

Informal drop-in sessions have also been arranged at:

Strathallan Primary School on Wednesday 29 January 2025 from 8.45-9.30 am, 2.45-3.30 pm and 5-6 pm.

At these sessions, council officers will be available to give further information on the proposal, answer questions on it and provide Consultation Response Forms for completion.

You are invited to have your say on this proposal. You can attend a public meeting, and/or you can make written representations by letter, email, or completion of a Consultation Response Form to any of the following:

sustainableschoolestate.enquiries@fife.gov.uk

Proposal to establish New ASC Provision within Strathallan Primary School, Education Directorate, Fife Council, 4th Floor (West), Fife House, North Street, Glenrothes, KY7 5LT via submission of a completed online Consultation Response Form at (Managing our School Estate / Fife Council) <https://forms.office.com/e/saCkTnM8f2>.

Printed copies of the Consultation Response Form will be available at the public meeting, informal drop-in sessions and from Strathallan Primary School.

In order to be taken into account, all views on the proposal, in writing, by e-mail or by completion of the Consultation Response Form, must arrive by close of business on Friday 21 February 2025.

Following conclusion of the consultation period, the Council will review the proposal and prepare a Consultation Report for consideration by a future Cabinet Committee of the Council. Further detail on this process is contained in the proposal paper.

Parents/carers and other interested parties are welcome to attend the public meeting or any of the informal drop-in sessions.

We look forward to seeing you at these events.

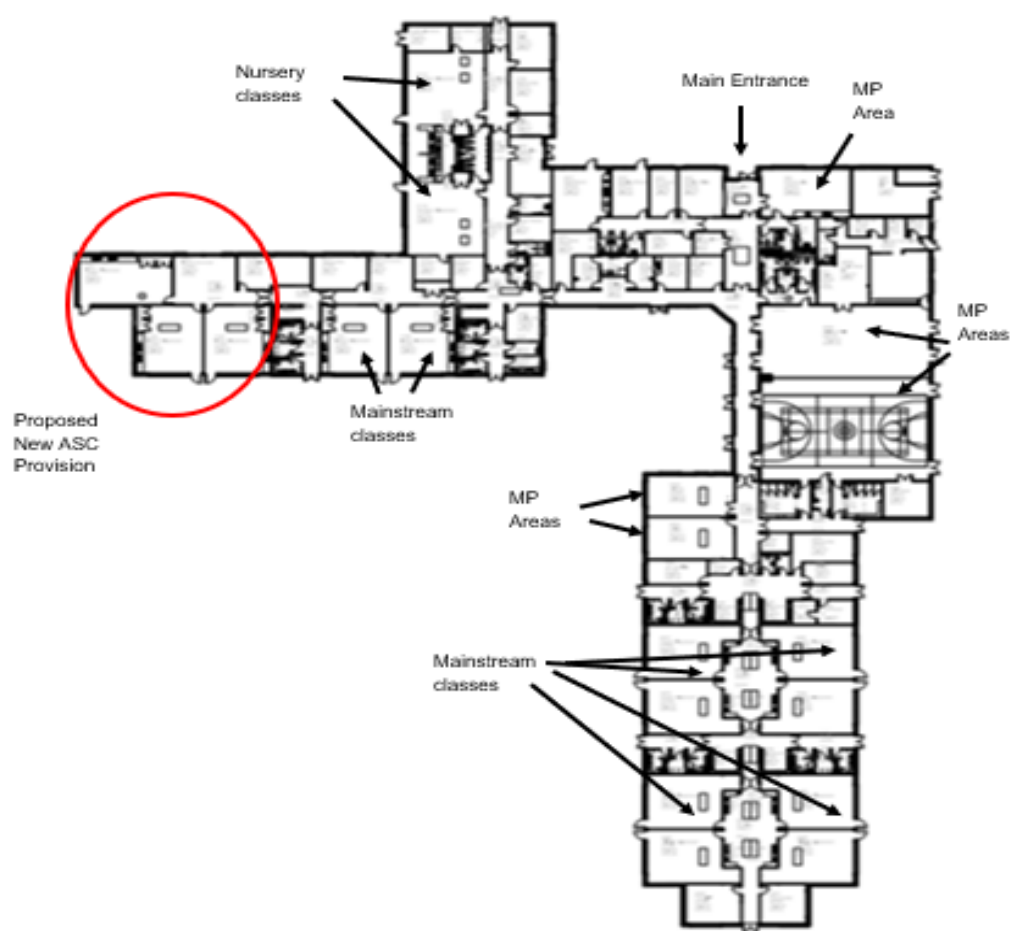
Yours sincerely



Jackie Funnell
Education Manager (ASN)

Enc.

Proposed Location of new ASC Provision in Strathallan Primary School



Appendix C
Notice of Correction of Inaccuracies

There were no Notices of Correction of Inaccuracies

Appendix D

Responses to the Consultation Response Form

Proposal by Fife Council to establish a new stage of education in a school, being New Additional Support Class (ASC) Provision within Strathallan Primary School, Kirkcaldy.

The consultation response form was used to gather feedback from parents/carers, pupils, staff and interested parties on whether they were in support or not in support of the proposal to establish a new stage of education in a school, being New Additional Support Class (ASC) Provision within Strathallan Primary School, Kirkcaldy. The Consultation Response Form is included as Appendix A to this report (Appendix 1.6 of the proposal document) and was made available, in paper format at the effected school, and from the Main Reception at Fife House, Glenrothes, for those requested it and printed copies of the Consultation Response Form were also available at the public meeting and informal drop-in sessions. It was also made available online at: [Proposal to Establish a New Stage of Education Within a School - New Additional Support Class \(ASC\) Within Strathallan Primary School, Kirkcaldy - Fife Council - Citizen Space](#) and the hyperlink <https://forms.office.com/e/saCkTnM8f2> was also included in the Notice of Consultation.

Summary of Answers to Section 2 of the Consultation Response Form

In total there were 18 responses through the online consultation response form.

Categories of stakeholders	%	*
Parent/Carer	78	
Pupil	0	
Staff member	6	
Grandparent	11	
Other interested party, please explain the nature of your interest and/or if you are responding on behalf of an organisation e.g. a community council.	6	

*Please note percentage figures are rounded

Which education establishment/s do you have a link with?	%
Strathallan Primary School	72
Valley Primary School ASC provision	6
A primary school in the Balwearie HS cluster	0
A nursery in the Balwearie HS cluster	0
Unknown/not provided	22

During the consultation process a total of 18 responses to question 3.1 on the Consultation Response Form were received, either in written form or online. The table below provides details of the responses.

	Question 3.1 Do you support the proposal to establish a new ASC provision within Strathallan Primary School, Strathallan Drive, Kirkcaldy from Monday 18 August 2025? (please choose one ✓)					
Parent/Carer of a child living in the:	Consultees who responded Yes	%	Consultees who responded No	%	Consultees who responded Don't know	%
Strathallan Primary School	1	5	8	45	4	22
Valley Primary School ASC provision	1	5	0	0	0	0
A primary school in the Balwearie HS cluster	0	0	0	0	0	0
A nursery in the Balwearie HS cluster	0	0	0	0	0	0
None of the above	0	0	0	0	0	0
Total	2	14	8	58	4	28

Pupil living in the:	Consultees who responded Yes	%	Consultees who responded No	%	Consultees who responded Don't know	%
Strathallan Primary School	0	0	0	0	0	0
Valley Primary School ASC provision	0	0	0	0	0	0
A primary school in the Balwearie HS cluster	0	0	0	0	0	0
A nursery in the Balwearie HS cluster	0	0	0	0	0	0
None of the above	0	0	0	0	0	0
Total	0	0	0	0	0	0

Member of staff:	Consultees who responded Yes	%	Consultees who responded No	%	Consultees who responded Don't know	%
Strathallan Primary School	1	100	0	0	0	0
Valley Primary School ASC provision	0	0	0	0	0	0
A primary school in the Balwearie HS cluster	0	0	0	0	0	0
A nursery in the Balwearie HS cluster	0	0	0	0	0	0
None of the above	0	0	0	0	0	0
Total	1	100	0	0	0	0

Other Interested Party	0	0	3	100	0	0
Total	3	17	11	61	4	22

In summary, 14 parents/carers responded to the consultation response form on paper or digitally, along with 1 staff member and 3 interested parties. The responses provided from the paper format are also included in the figures above. No pupils completed the online consultation form.

Appendix E:

Comments contained on the returned Consultation Response Forms

The Consultation Response form is reprinted at Appendix 1.6 of Appendix A to this document.

Comments made under 3.1 of the Consultation Response Form - if you do not support the proposal, what are your reasons?

1	Educational benefit statement is inappropriate, assessment form has only listed positive effects with zero negative affects on pupils, they say roll numbers are falling , if so why the need to build additional support , the method of prospects of future intake is flawed as many families move into catchment area so their children can attend strathallan primary, the projected dates of opening on the 18th August 2025 if proposal goes through but in the newsletter work will be finished October 2025, concerns of safety of children who attend the school as their is growing violence and aggression in mainstream schools already , parking at strathallan is already a major problem with the additional transportation for 20 additional needs children
2	Education Benefits Statement is inadequate. The "Assessment Of The Likely Effects" has listed only perceived positives with zero consideration to any negative effects (in particular on current pupils). According to The Schools (Consultation) (Scotland) Act 2010 4.1.d the proposal should reference the evidence used to make the conclusions of the "Educational Benefits Statement" and the "Rationale for the Proposal", no evidence has been submitted. The "Rationale" seems flawed, it is statistically improbable that the total student roll will fall dramatically and at the same time the Additional Support roll will drastically increase, there is no evidence (that you have supplied) that the ratio of total students requiring Additional Support should increase. You use projected falling roll as a reason for the proposal but then also suggest that 2800 new houses are also a rationale (it can't be both). The method to project future intake at Strathallan if flawed, many young families move into the catchment area AFTER the birth of their children. The dates in the proposal don't align, the new students are projected for 18th August but the area won't be made fit for purpose until October (according to section "Financial Implications 7.1" there is no mention in the proposal about what arrangements are in place for the period between August and October.
3	I do not support the proposal for the following reasons. 1)If births or enrolment figures increase in a few years from now the school will have a serious issue in how to accommodate catchment area children. 2.Leaving only one classroom for P1 and this reducing part of their playground is unacceptable to the existing populous and too much of a gamble for future generations. 3. Increased Traffic. If children attending the proposed new service have physical disabilities they will likely require to be transported in which will mean a vast increase to vehicles entering the school grounds. It is already not manageable and a safety risk for children as it stands with the current set up and introducing this new facility will cause serious logistical issues increasing the likelihood of a child being hit by a vehicle. The school does not have sufficient parking spaces as it stands so to increase this problem is very ill

	thought out. Some children may be transported by minibus however if as described at the public meeting somebreayire to be tube fed then I can only imagine transporting all children in one minibus will not work for their additional needs. 4.This proposal on the face of it will not serve the Strathallan community therefore as the school is already very small and has limited facilities a bigger school or community venue would make much more sense.
4	safety concerns with increased traffic. Concerns regarding condensing classrooms to accommodate, losing classroom space/ facilities and opportunities for current pupils. For the future, if birth rates were to rise may not be accommodated in own catchment area. Concerns regarding general safety of children. P1 space will be lost.
5	I was unable to attend the meetings, therefore unsure if these concerns were addressed. I have a family member with autism that already attends Strathallan school and as a healthcare professional myself can state the staff are not knowledgable in basic care of an autistic child/ skilled to be caring for children with additional needs. Strathallan is currently unable to provide ample support in classrooms for children with additional needs. Many children with additional needs hold a blue badge, the school is currently unable to cope with the school traffic on an average day and definitely cannot cater to an influx of disability vehicles.
6	School drop off is already difficult
7	1. Proposal states it will not impact the mainstream education to catchment pupils, however, this is very subjective. I have concerns there will be negative impact. 2. Increase in traffic flow when the school cannot cope as it is. Therefore it is very likely there will be an increased risk to children safety. 3. No confirmation or detail whether there would be adequate support staff patrolling playground to ensure no issues given the addition of a large number of children with additional needs. 4. The rationale provided is that "projections indicate" the school roll numbers will reduce. I have concerns regarding the accuracy / reliability of these "projections." 5. The rationale indicates there will be no negative impact for the "long term." This is not clearly defined and I therefore have concerns for the short and medium term. 6. No details of any contingency plans to implement ASC elsewhere, indicating this proposal is a merely a formality. 7. There appears to be little / no benefit to the children who currently attend the school. 8. Proposed increase of 20 "full time spaces" for ASC. This is vague and does not provide any assurances this will be the maximum number. This also poses the question of how many part time spaces will there be / what will the realistic numbers be? 9. Other than details sent today (18th Feb 2025), I have concerns there has been a lack of detail provided for this proposal. The full details appear to have only been disseminated merely days before the end of the consultation phase. Why? I acknowledge there was an open day where representatives were able to provide some further detail, however, this was not communicated well (little/no reminders etc), and was arranged for 1 day only, thus limiting attendance opportunity. There has been no detailed communication to parents of children at Strathallan from the school or parent council. Why? I am not the only parent who has these concerns. Planned occupation date is Aug 2025 - adds to the skepticism around the proposal being merely a formality. In summary, I am wholly against the proposal. I am particularly disappointed at the lack of

	engagement / detail from the school and would have expected there to have been far more information / consultation earlier.
8	<p>1. Proposal states it will not impact the mainstream education to catchment pupils, however, this is very subjective. I have concerns there will be negative impact. 2. Increase in traffic flow when the school cannot cope as it is. Therefore it is very likely there will be an increased risk to children safety. 3. No confirmation or detail whether there would be adequate support staff patrolling playground to ensure no issues given the addition of a large number of children with additional needs. 4. The rationale provided is that "projections indicate" the school roll numbers will reduce. I have concerns regarding the accuracy / reliability of these "projections." 5. The rationale indicates there will be no negative impact for the "long term." This is not clearly defined and I therefore have concerns for the short and medium term. 6. No details of any contingency plans to implement ASC elsewhere, indicating this proposal is a merely a formality. 7. There appears to be little / no benefit to the children who currently attend the school. 8. Proposed increase of 20 "full time spaces" for ASC. This is vague and does not provide any assurances this will be the maximum number. This also poses the question of how many part time spaces will there be / what will the realistic numbers be? 9. Other than details sent today (18th Feb 2025), I have concerns there has been a lack of detail provided for this proposal. The full details appear to have only been disseminated merely days before the end of the consultation phase. Why? I acknowledge there was an open day where representatives were able to provide some further detail, however, this was not communicated well (little/no reminders etc), and was arranged for 1 day only, thus limiting attendance opportunity. There has been no detailed communication to parents of children at Strathallan from the school or parent council. Why? I am not the only parent who has these concerns.</p>
9	Increased traffic congestion & road safety issues.
10	Increased traffic both within & outwith school grounds. Concerns re: potential safety issued within the school grounds. Contradicts the whole point of having clearly established catchment areas for primary schools. Taking away existing space & resources will be detrimental to the current school population; coupled with minimal budget allocation to the school (with many resources being supplied via fundraising efforts of the Parent/Families & local school community. What other sites have been considered? Minimal information supplied with minimal time for consultation - inadequate to say the least.
11	<p>The school already has composite classes - hence to add a further cohort of pupils will only exacerbate the need for further composite classes.</p> <p>Furthermore, the increase in pupil numbers will clearly result in increased numbers of people entering the school site, as well as increasing traffic in an area that is already heavily congested at peak times.</p>

Comments made under 3.1 of the Consultation Response Form - Are there any further comments on the proposal you would like to make?

1	Facts proposed at the drop in are totally different to facts stated in the newsletter
2	I feel an additional support unit within Strathallan Primary would have a positive impact to the lives of children with additional support needs or complex needs within their local community. When my son was beginning his school years to have to provision in his catchment would have been ideal. Now he's settled I'm unsure we'd move him but for other children this should have a positive impact on the lives of them and their families.
3	I would like to know how this will impact the school and also for children who doesn't get a place in the new ASC unit will they still be getting the right support within the school?
4	I think Strathallan would provide an excellent location for an ASC.
5	Would a purpose built facilitate not make this a better solution especially for the children using this to meet their additional/complex needs
6	If the meeting minutes could be generated this would be beneficial
7	My only concern is around whether this will make class sizes even bigger as they are already at maximum capacity. My son complains his class is really loud and I think it's difficult as he is in a maximum class size of 33 pupils. I think the school would need to have less placing requests to limit the number of pupils.
8	There is a contradiction in the proposal where point 3.4 states approximately 2800 homes are due to be built in the area however point 3.8 says if this proposal is approved this will reduce capacity by over 100 pupils. The proposal overall suggests that the area of the school highlighted will also be completely sectioned off however point 3.8 said the third classroom will still be available for wider use by the school. It is also clear that a portion of the playground will be sectioned off and the grounds are not that large to begin with. I also want to question whether exiting pupils of the school will be able to access any of the facilities. I have heard from those who attended the meeting that they will not in any way. Again contradicted by the proposal advising use of the third classroom. But hard to understand whether this will be more than a classroom. I struggle to understand the need for a sensory room but if there is to be one it is disappointing that pupils will not have access. Point 4.2.2.2. says the enhanced provision will be an additional resource to other school users within the community such as out of school provision. Who does this mean exactly? Breakfast club? Out of school club? Mainstream pupils at all? I am not sure what you mean by Strathallan Community.
9	I feel at the meeting our concerns were addressed but the outcome of this proposal and how my child would be affected are undetermined. After being advised this was the same proposal for valley primary (being only 20 proposed children) but now have too many, I was advised at the time of the meeting they are unable to guarantee this would not happen at Strathallan. After being advised my child would not be affected by this proposal but after the meeting I feel this is not the fact. My main concern is the education/safety of my child and feel this proposal would be detrimental to her welfare.
10	As above. I do not support the proposal.

1 1	Not sufficient consultation - seems like this has already been decided, despite (belatedly) asking for views of those who are associated with the school.
1 2	I would like to know what other sites have been considered for this proposal - if any. I would also disagree with the projected figures regarding future school rolls - how can this be predicted when families are constantly moving into this catchment area and/or adding to existing family households? Overall I strongly feel that this proposal would be detrimental to the current school children (& staff); as well as the wider community.
1 3	The proposed plan & consultation were not widely advertised / promoted to local residents, thus not allowing many people to air their views/concerns. I have only just learned about this proposal & in speaking with many people in the neighbouring areas, many have expressed concerns and remarked about how little was known about the proposals.
1 4	Whilst I am positive around the new classes I have a major concern about further traffic around the school and the local estate. It's a nightmare already with cars parked on yellow lines, cars having to drive up on the kerbs. How can you say there is no impact to local community? I would like to hear about the traffic management plans you would implement to combat any further. I'm actually astonished that this isn't mentioned in your plans anywhere.

Appendix F:

**Other Written Responses including Requests for Information (whether
Freedom of Information or Otherwise)**

Copy of other written representations received by Fife Council

Two written representations were received from interested parties by email.

1	<p>We were unable to attend the public meeting on Wednesday 29th January regarding the proposed ASC development at Strathallan Primary School.</p> <p>We would like to request a copy of the minutes / meeting record from the public meeting to better comprehend the proposal and consider other concerns raised.</p> <p>This would allow us to form a more rounded response.</p>
2	<p>I am a parent of a child who attends Strathallan Primary School in Kirkcaldy and recently received correspondence with regards to the plan to create additional support classes for children with additional needs.</p> <p>The reason I have composed this email is because I wanted to clarify as per the plan if two classrooms or one will be utilised for this purpose, as the attachment I received in my opinion appears to show two dedicated classrooms.</p> <p>Additionally having had my older children attend their schooling at Strathallan I can remember the days when there were issues with parents who wanted their children to attend the school which led to three P1 classes being created. Two of which appear to be the classrooms highlighted for children with additional support needs.</p> <p>Obviously if my understanding is correct then I have a concern as to how any future children with no additional support needs will be accommodated if there was a sudden influx of children in the catchment area.</p> <p>Finally, whilst I support provision for the benefit of children with additional support needs this in my opinion seems to be quite a sizeable area of classroom(s) that has been set aside.</p> <p>I just want to confirm that the intended provision is for the benefit of pupils who will attend Strathallan Primary School only, and not for example for the benefit of pupils from other schools, which I'm sure will not be the case.</p> <p>As you can imagine the parking and logistical issues at the school have been historically and continue to be a real issue.</p> <p>I look forward to hearing from you.</p> <hr/> <p>Many thanks for the reply to my earlier email and a clear explanation.</p>

	<p>I suppose the only remaining query I have is if the figures change in the future and the projections regarding pupil enrolment prove to be incorrect as a result of families moving into catchment, what provision will then be made at the school to accommodate this?</p> <p>Also will the existing proposals have any impact on current classes e.g. increased composite learning?</p>
--	--

Appendix G: Record of Public Meetings

Transcripts of Public Meetings

As detailed in the Notice of Consultation, the proposal document and as advertised by other means, 1 public meeting was arranged along with 3 drop-in sessions at various times of the day to suit working or childcare arrangements for parents/carers and other stakeholders.

Groupcall reminders to parents/carers were issued prior to each of the public meetings, to publicise the forthcoming meetings and the link to the online form to make representations.

On Tuesday 18 February 2025 a final reminder was issued to parents/carers via Groupcall to enable parents/carers a few days to submit any feedback prior to the end of the consultation period on Friday 21 February 2025.

There were 14 people in total who attended the public meeting. Although the drop-in sessions were promoted in the Notice of Consultation and advertised by the school, there was little uptake at these sessions by parents/carers or interested parties.

Transcript of Public Meeting - Wednesday 29 January 2025 – Strathallan Primary School

FIFE COUNCIL – EDUCATION DIRECTORATE

Public Consultation Meeting held at Strathallan Primary School

Wednesday, 29 January 2025 at 6.00 pm

Present:

Shelagh McLean, Head of Service (Education Directorate) (SMcL) (Chair)

Jackie Funnell, Education Manager (JF) (Education Directorate)

Neil Finnie, Quality Improvement Officer (NF) (Education Directorate)

Kim Lawson, Compliance Officer (Education Directorate) (minute taker)

14 people attended the meeting (including the Headteacher and Depute Headteacher).

Shelagh McLean (SMcL) opened the meeting by introducing Fife Council representatives.

This was the formal public meeting scheduled in respect of the Schools Consultation Act (Scotland) (2010) following the decision by the Cabinet Committee of Fife Council which authorised the Education Directorate, on 9 December 2024, to consult with parents and pupils on the proposal to establish a new stage of education in a school – new additional support class (ASC) provision within Strathallan Primary School, Kirkcaldy.

The statutory consultation period is from Tuesday 7 January 2025 to Friday 21 February 2025.

Questions were requested at the end of the presentation and any questions that arose after the meeting could be sent in as outlined in the proposal paper. A summary of these questions would form part of the final report.

SMcL covered a PowerPoint presentation on the proposal, highlighting the educational benefits of the site, along with a catchment map.

Question	I can see you've done lots of research on births, housing etc. In terms of the facilities proposed, how many children from the Strathallan Primary School catchment will access and benefit from this?
Response	JF: The proposal will not only benefit children within the Strathallan catchment area, it will benefit children across both the Balwearie High School cluster and the Kirkcaldy area. There will also be some children within the Strathallan Primary School catchment area who will access the provision and therefore benefit. We cannot predict the postcodes of children who will require this support in the future, therefore we need to ensure we have enough facilities available across areas.
Response	SMcL: Initially, the ASC will not be full. There will be places available for those who require the support, creating additionality when it is

	required. 37% of children in Scotland are considered to have an additional support need. We work to ensure we can support all needs in mainstream however we would manage access to this ASC provision over time and it would evolve.
Question	In relation to the pupil roll, all 3 of my children have gone to Strathallan Primary School. I currently still have one who attends here. At one point, I remember there being 3 P1 classes. Nobody can predict births in the future and I think you are basing this on short term enrolment figures. Moving forward, there might be more children within the catchment area looking to attend here. What would happen if there were more children to accommodate in the school and not enough classrooms for them?
Response	SMcL: We monitor the births and pupil rolls within Fife carefully. We continuously run new projections. If there were any significant differences, we would seek to ensure we could meet the changes. Within the Education Directorate we manage and watch potential housebuilding throughout Fife, monitor trends and placing requests. We know the areas in which we are likely to have issues in plenty of time, although we cannot guarantee no changes will be required. Through using two classrooms at Strathallan Primary School as an ASC, we would not anticipate any issue in relation to the mainstream capacity required. In any situation where we determine there could be an issue with capacity, we consider catchment changes at an early stage and manage this across the school estate.
Question	My concern is if my children grow up and have children of their own, will they be guaranteed a place at this school?
Response	SMcL: We undertake catchment reviews regularly to ensure we have enough places across the school estate. It is not often that we do not have enough catchment places. If we established an issue, we would have time to undertake a catchment review, through a statutory consultation, as well as manage placing requests into the school. Moving forward, the pupil roll will be the lowest since the 1970s, therefore we do not anticipate there will be an issue here.
Question	This school has a good name. It would be unfortunate if a child could not get a place here. If the school was oversubscribed, would it result in more competition for mainstream places?
Response	SMcL: This is unlikely to happen as the school roll goes down however it can happen at any time. It depends on the stage of the child and the number of places available in the class. Across the school estate, our P1 classes can hold up to 25 children, P2-3 up to 30 children and P4-7 up to 33 children. We allocate staff based on the number of young people in the school.
Response	JF: The staffing in the ASC would not affect the mainstream staffing. They would be completely separate.
Question	Are you able to confirm the numbers in the ASC would never be above 20 children?
Response	JF: It would not be above 20. 10 children in each ASC is the preferred model. It is one of the ASN models which works well.

Question	What enhanced support would be provided?
Response	SMcL: The ratio of staff to children is higher. There would be 1 teacher to every 10 children, along with Pupil Support Assistant support, which can be 1 to 4 or 1 to 1 depending on the needs of the children they are supporting. The design of the environment is based on the needs of the children who will be using it, with an emphasis on the need for space for both the children and moving and handling. The area has to match the needs of the young people who will use it.
Question	OK. So, the ASC is not necessarily for children who have behavioural issues?
Response	JF: No, they will not have behavioural issues. They are children with additional support needs, such as autistic profiles etc. In Fife we have the Pupil Support Service (PSS) which supports children who have behavioural issues. Some children will have dysregulated behaviour and will require higher levels of support than others.
Question	How will this affect the mainstream classes at Strathallan Primary School in relation to staffing and management? Will it be more difficult for us to speak to management? Will their time be more stretched?
Response	SMcL: Staffing in a school is determined by a formula which takes into account the number of pupils and whether the school has an ASC, as well as a number of other factors. All of our young people are counted. The management model of the school will be reviewed if the proposal is progressed, however even if it wasn't to progress, the school roll will decrease. This in itself could lead to a change in the leadership structure and we would support the school management through any necessary structure changes.
Question	Do you see any changes happening to the school management model?
Response	JF: The school went from having 1 Headteacher and 2 Depute Headteachers to 1 Headteacher and 1 Depute Headteacher based on the falling school roll. Children enrolled within an ASC count as 2 in relation to the school management model, as we realise the work required by the leadership team. Both mainstream and ASC children would be counted towards the management structure if the ASC were to be in place. In the longer term, the school management structure will depend on the school roll. In the interim, we would look to put additional support in for the transition period. Sometimes this can be in the form of a Principal Teacher rather than a Depute Headteacher. The leadership responsibilities differ, based on different models and pupil numbers, which would need to be assessed at the time.
Question	Would you put this in place for the ASC opening?
Response	JF: We need to work through the consultation process first. We would work closely with the Headteacher and Depute Headteacher to determine this when it was appropriate to do so.
Response	SMcL: It will also depend on the number of young people enrolled in the ASC in August 2025.
Question	If the school roll decreased in the mainstream, would you increase the ASC roll?

Response	SMcL: No. Although there could be enough capacity within the school in the future, we have no plans to increase the size of the ASC.
Question	Does the ASC have a separate budget? If it doesn't, and there is one school budget, what is the impact on the school? I would imagine they would be sharing resources.
Response:	JF: The core budget for the school would not be affected by the ASC. The budgets are separate. The Support for Learning Teacher and PSAs for the mainstream would remain the same. For the ASC, we hold the budget and review needs centrally, depending on the needs of the children currently accessing the ASC. The profiles of the children can vary and changes happen throughout the year. The budgets for the mainstream and ASC are separate. Any ASC expenses such as personal care will be met through their budget.
Question	How integrated will they be?
Response	JF: Some of the children who attend an ASC have what we call a 'Split Placement' which means they potentially attend an ASC for 2/3 days of the week and their catchment school for the rest of the week. Some of the children from the ASC would integrate into sessions such as PE and drama with staff from the ASC supporting them. It should not affect the mainstream as the children will always be supported by ASC staff.
Question	Where do children who are Strathallan PS catchment and are currently attending Valley ASC fit into the priority list for getting a place at Strathallan PS ASC if this goes ahead?
Response	JF: For some of the children it might be in their best interests for them to make the move. If it was, they would get the opportunity. We would need to work with each of the children's parents/carers to determine this. It is not one size fits all.
Question	I have read the proposal and can see there would be a separate entrance to the school created. Would the ASC children not use the main playground?
Response	SMcL: The ASC will have its own area but pupils may, at times, also access the main playground, where appropriate.
Response	JF: If the ASC children were going to use the main playground they would be supervised. They will be able to use the main playground if they are able to do so with enhanced support.
Question	Do you know what will be done to the building?
Response	NF: The plans describe an outdoor space, minor adaptations to the toilets, the creation of an accessible toilet and a multi-purpose space split into 2, with 1 area being used as a sensory space and the other being used as a quiet space.
Question	Will there be a segregated playground?
Response	SMcL: There will be a small fenced off area for children to be out at lunch and break times.
Question	Just to clarify, this will not be to the detriment of the mainstream children?
Response	NF: It will not be to the detriment of the mainstream children. It will be a small corner of the playground of about 10m.

Question	How does that affect emergency vehicles gaining access to the school?
Response:	NF: Emergency vehicle access is one of our key priorities. We have ensured there will be no issues.
Question	The school has issues with parking already. I'm thinking some of the ASC children will require transport. The increase in cars around the school would be concerning. The green space we have at the school is already small. What provisions have been made for ASC transport coming in?
Response	SMcL: Every school in Fife has a School Travel Plan. This will need to be updated with the input of various stakeholders, including the Parent Council. We have factored this into our planning.
Statement	Parking at the school is chaotic at the moment. Children with physical disabilities might have issues with access as there is limited space already. Adding another 20 families in would make it even busier.
Statement	I phoned the police one day as it was an accident waiting to happen. The police passed the buck. If there is no handing out of fines there will be a problem.
Statement	The police are powerless in this.
Question	SMcL to HT: Do we shut the gate when children are coming in?
Response	HT: We don't as we have a child who requires access.
Response	SMcL: There is a discussion to be had. It is a perennial issue. The number of young people in our schools is going down therefore the number of people accessing the school grounds should go down.
Response	NF: There will be access across the ASC site. The majority of children will be transported in a minibus so it will be shared transport. I would not envisage a massive change.
Statement	The current traffic issue would be a problem for the minibus.
Question	Would the changes being made to the classrooms be funded independently from the school?
Response	JF: Yes. They would not come from the same budget as the school
Question	Which children would take priority for places in the ASC in August 2025?
Response	SMcL: There is currently no waiting list for places in an ASC. There would be an initial redistribution of places in August. There would be enhanced transitions required therefore we would be required to start discussing this now, however we cannot as we cannot confirm the proposal is going ahead. We might see an increase in numbers during next year when the building is complete and established. Young people can also access the provision throughout the year.
Response	JF: It is not the HT who manages places. Places would be discussed and agreed at AMG. Most young people transition in August however panels meet regularly to discuss applications as needs change. These meetings have input from the Education Psychologists, HTs and other key stakeholders.
Question	In 2 to 3 years from now, if the ASC was undersubscribed, could one of the classrooms be used as PSS?

Response:	JF: There are separate children who access these services, with different needs profiles. The services are quite different. We would not see this happening. There is no vision for this. The need for ASCs is increasing, therefore it is unlikely to be undersubscribed.
Response	SMcL: We are not anticipating PSS will change nor the services coming together.
Response	JF: There is no discussion around the services merging.
Question	In relation to potential intakes for future years, my son will hopefully attend here in a few years, will there be any issues with this? I've noticed on the plans, it is the current P1 area which will be used for the ASC.
Response	SMcL: There will be no impact for catchment children and we are not anticipating the change will stop the school's ability to accept placing requests either. In schools, we move classrooms all the time and make sure they are appropriate for the age and stage of the children within them. Our teachers and PSAs are fantastic at organising this for any given year group. I appreciate this can be a change for the school, however this happens every year in some schools. We also have some school buildings which are not fully accessible, which means we often have to change classrooms around as well.
Response	JF: Can I add as well that there would be additional furniture provided for the ASC to support the children within the areas.
Question	Will teachers plan for ASC children to join in mainstream classes?
Response	SMcL: At times, if it is appropriate for the child, they will be able to join the mainstream class. Staff from the ASC would accompany the child.
Response	JF: The mainstream class teacher wouldn't need to prepare anything additional either. The support for the child would come from the ASC. They could get involved in PE, drama etc. The staffing would be there for them to integrate.
Question	Would they get a place over a catchment child?
Response	JF: No, they wouldn't. The processes are completely separate.
Question	Will all children attending the ASC count as a mainstream child as well?
Response	JF: That depends on their integration with the mainstream school and whether it is their catchment primary school or not. For example a child might live in the Burntisland PS catchment and attend the ASC at Strathallan PS. They will then attend the ASC for 2 days and have 3 days at their catchment school. There is always a space in mainstream classes for children who need it. The staff in the mainstream and ASC would work collaboratively in the best interests of the child.
Question	Has this been projected in the figures?
Response	JF: Yes, they have.
Statement	I'm very excited about this, I just wanted to make sure.
Response	JF: That's great. We currently have 8 provisions across Fife which have a mixture of full-time and split placements. They are managed around the needs of the child, to ensure we have an appropriate package in place for them.

Question	How will the ASC be staffed?
Response:	SMcL: It will depend on the number of children we expect to be enrolled. The national agreement for ASC staffing is for a ratio of 1 teacher to 10 children with either 1 or 2 PSAs working alongside depending on the needs of the children.
Response	JF: We would base our staffing on the profile of the children attending. Staffing in ASCs can be refreshed throughout the year to ensure flexibility and that we are meeting the needs of the children.
Response	SMcL: For staff in these roles, there is training available. Many have undertaken additional qualifications and have a vast experience of supporting children with additional support needs.
Question	There are some children enrolled at Strathallan PS at the moment who need an ASC. Could they do a split placement without having to make a placing request?
Response	SMcL: No. They would still require an application to be submitted to the AMG. Experience of staff in ASC can be shared across the school. They will work collectively, which will be to the benefit of the current staff. There is a huge benefit to having a mixed staff group.
Question	Who would be in charge of the ASC?
Response	SMcL: The structure would be dependent on numbers. The Headteacher of Strathallan PS would lead. There would be central officers responsible for ASC provision.
Question	There are children here who need additional support. Will this alleviate their needs?
Response	SMcL: Through the creation of additional spaces within the proposed ASC, we would be expecting to be able to provide more support. We are looking at this in mainstream to determine the best way to support children. The question we would need to ask for individual children would be would they benefit from an ASC place or through having additional support provided through mainstream?
Statement	I've had to fight for support for my children. There is a lot of press surrounding this at the moment.
Response	SMcL: We understand. The proposal is the start of a possible change. We talk regularly about whether we have the right resources in the right place.
Question	How do we make it easier for Strathallan PS children to get a place in the ASC?
Response	SMcL: We have recently adjusted the process and will continue to look at the application process. The team around the child needs to agree. We would always want to put the best support available in place for the young person. We try to make things as easy as we can. An ASC isn't always the answer for a lot of children and we have different provisions available.
Response	JF: In relation to current PSA staffing, we are refreshing the formula from August 2025, as we recognise both deprivation and additional support needs have an impact. The new formula will have a positive impact on Strathallan PS. In mainstream classes, we realise there has been pressure across all schools, therefore we are looking to realign and address issues. This is separate to the ASC discussion and the

	HT is part of this. We are always looking at budgets to make sure they are equitable across the service.
--	--

Shelagh McLean concluded the meeting by thanking people for their attendance and their comments, as well as encouraging people to provide feedback by any of the various methods.

Meeting closed at 7.27 pm

Appendix H: Pupil Consultation Feedback

Any other relevant information - Pupil Consultation report

Proposal by Fife Council to establish a new stage of education in a school, being New Additional Support Class (ASC) Provision within Strathallan Primary School, Strathallan Drive, Kirkcaldy.

Pupil focus groups were undertaken with representative groups of over 25% of the pupils within P4-P7 in Strathallan Primary School. The table below provides the number of pupils at the affected school and the percentage of P4-P7 pupils taking part in the pupil consultation sessions:

School Name	School Roll Census 2024	No. of P4-P7 Pupils	% of P4-P7 on the roll	P4-P7 participation in sessions	% of P4-P7 pupils
Strathallan PS	281	175	62.3%	51	29%

The pupil consultation took place on Tuesday 4 February 2025, to seek the views of pupils regarding the proposal to establish a new stage of education in a school, being a new Additional Support Class (ASC) Provision within Strathallan Primary School.

The Quality Improvement Officer (QIO) and Team Manager both facilitated groups of individual primary stages and outlined the proposal to each group of pupils, provided some background information on ASC provision across Fife and shared the reasons for the proposal. They discussed what that would mean for the pupils attending Strathallan Primary School and any impact for pupils attending the ASC provision Valley Primary School.

A number of questions, listed below, were posed to pupils to allow officers to gather information and feedback. A series of picture prompts were shown to pupils to ensure they understood the process and what a consultation would mean for them.

Format of the sessions:

1. **Set the scene**
2. **Context** – Why are we having a consultation?
3. As part of the **Statutory Consultation**, we want to come out and speak to pupils regarding the proposals that we are consulting on. Pupils' views are important to us.
Education Scotland will also come out to see the schools and will speak to several pupils, the Headteacher and parents.
Advise pupils that all the comments are recorded, form part of a report, and a decision will be made in future by our elected members (explain to primary pupils who elected members are).
Background – explain the 3 types of provision we have across Fife:

Mainstream – Early, Primary and Secondary

Within mainstream, additional support may be provided to support individuals through targeted support or interventions from school based staff including pupil support assistants, support for learning staff or outreach staff from Support for Learners Service and/or Pupil Support Service. (For example – some pupils may use technology to help with writing, some pupils may do kit bag sessions or lego therapy, some people might work with other adults or in small groups, in the classroom or at other parts in the school)

Enhanced Provision - Additional Support Classes

Additional Support Classes (enhanced support provision) exist at primary stage to meet the pupils' identified additional support needs where these cannot be met within a mainstream classroom or school. At times individual children are on a shared placement between Additional Support Class and their mainstream school. This means that they spend some time in an additional support needs class and sometime in a mainstream primary school like Strathallan

Special Schools

Offers specialist education for learners with complex additional support needs from 3 to 18 years.

What is a **catchment** area? (Map of Fife and local catchment areas relevant to the school)

Explain that normally pupils attend their catchment school. However for pupils requiring a bit more support, they attend an ASC and it may not be in their catchment area – it may be in the next town. Show map explaining this.

What is an ASC provision?

Explain that an ASC provision is a classroom that provides support for a small number of pupils in the one classroom.

Across Kirkcaldy (show on a map) – we only have one ASC provision within Valley Primary School and pupils from across the Kirkcaldy area will travel to access this enhanced support.

We have been looking across Fife to make sure we have enough space in these provisions for the number of pupils that need to access it.

The proposal is to set up a new provision in this school which will be pupils from this area could attend a provision here rather than travel to Valley Primary Schools.

This provision will use 2 classes in this school that are currently being used for infant pupils just now.

Things that may change for some pupils in the future:
would not have access to the proposed 2 classrooms in the infant area

there would no longer be access to the nurture space, as this space would be used for a new accessible toilet, however, this space will be moved elsewhere in the school

multi-purpose spaces across the school may be in other parts of the school instead of the infant wing.

Things that would stay the same:

- pupils from this catchment area would still come to Strathallan Primary School
- there will be no change for the pupils in this school. You would still have your classroom and your teacher. You would still have access to the gym hall/dinner hall, outside areas
- would still have access to the resources across the school including Learning Support Teacher, Pupil Support Assistants.

4. Prompt questions:

- Are you aware of a consultation proposal to set up a new ASC in this school?
- If yes, has this been discussed at home or in school?
- What do you think about the proposal to set up a new ASC in this school?
- What do you think about the plan to use the 2 classrooms for a maximum of 20 pupils that would attend the ASC?
- Do you think there will be any impact on the school if current Strathallan pupils did not have access to these classrooms?
What would this mean for the pupils?
- Do you think this will make any difference to your time in school (P4/5/6/7) educational experience?
- Would they have any concerns for more pupils attending the school? There may be another 20 pupils in the school?
- Do you think it would be good for any pupils from this area to attend this school for this provision rather than travelling to Valley Primary School?
- This option may allow pupils to walk to school rather than being taxied into Valley Primary School – do you think this is a good idea?
- What's important to you about your school?

Strathallan Primary School – Tuesday 4 February 2025

51 pupils of Strathallan Primary School took part in the discussion. The same questions were asked of each group. Each primary stage was split in half to enable pupils an opportunity to express their views. There were 11 P4 pupils who took part, 13 P5 pupils, 13 P6 pupils and 14 P7 pupils, which equated to 29% of the total P4-P7 roll. The pupils were positive in their views and eager to share information with the officers.

The comments were as follows per age primary stage:

P4 (11 pupils in total)

The majority of pupils had heard about the consultation proposal to set up a new ASC in Strathallan Primary School as it had been discussed in school. Only a small number of pupils had heard it being discussed at home.

The majority of pupils thought it sounded like a good idea for the following reasons:

- It would give people with ASN more space to learn in their own way.
- It would be good because sometimes in the classroom is too loud. Some people don't like this and get upset.
- Quiet space is good.
- Good idea for people to come into the school and learn their own way.
- Good thing for people who need space and they need help to do things but not too much.
- I think classrooms should be calmer in case there are children who need to be in a wheelchair or don't like loud noises, so they can come in and learn. The areas around the 2 classes should be quiet.

The majority of pupils thought it was a good idea to use the 2 classrooms for an ASC and if the one classroom was spare it could be added in as well. One group advised that they thought there were around 10 pupils from their school that could use the provision.

The majority of pupils did not think it would impact on the current school but sometimes a few kids use this room while others were thinking about a particular pupil and they would miss this pupil if they weren't in their class. The pupils thought it would be good if the pupils in the ASC had their own space to play outside, it would be good for pupils who cannot cope with mainstream and good for PSAs as well.

The majority of pupils across the two groups did not think it would have any impact on their learning as "their learning would be same thing with more people." They thought the impact would be on pupils who go to ASC. One commented that, "In class, we do harder stuff, so it might be too hard for them, so the ASC might be about right for them." Another commented, "My little sister is down that end of the building, I don't know if she might be disruptive if moved."

When asked if they would have any concerns with more pupils attending the school they all said no. One commented, "the more the merrier." With another adding that "I go to drama and some of the children there have 300 pupils in their school. I wouldn't like the school to be too crowded though." Both groups commented that they would welcome new pupils into the school.

All 7 children thought it was a good idea for children to attend a school in their local area. One added, "I think we should have a certain taxi service which would drive them to the nearest ASC." Another added, "I think it would be a good idea for people to have space as it can get crowded. In the playground, I wouldn't want it to be too crowded. A playground of people going to ASC would be a good idea for them to have their own bit."

All of the children thought it would be a good idea for children to be able to walk to school.

The following points were provided in relation to what is important to the pupils in their school:

- Everyone learns within a safe space and we can learn different languages
- Get a rest at breaktime and time to eat
- Staff in the school who help when you fall and the dinner ladies who feed us
School values – ambition, caring, respect and empathy. Pupil is aware these may recently have been changed
- I like it accepts people with disabilities and supports them in their journey for learning.
- It's good to have those extra people in class to help them.
- I think if people come to our school they can still learn in maths and writing. I like writing stories.
- You make lots of friends and have a lot of space to play. I think the school is nice.
- Everyone has space so if people don't like others getting too close, we have enough space.
- All people get to interact with each other and if they need help, there is plenty of help available.
- I think there is currently a mini-ASC room in school where some people do their work so it helps them.

P5 (13 pupils in total)

The majority of pupils had heard about the consultation proposal to set up a new ASC in Strathallan Primary School as it had been discussed in school. Only a small number of pupils had heard it being discussed at home.

All of the pupils thought it was a good idea to set up the ASC provision for the following reasons:

- You have pupils with learning difficulties, and they need space to function.
- Small space would work and it would be their own area as everyone should learn.
- They would be comfortable.
- Good idea for pupils who need some help to learn better.
- They need to learn different to other pupils in class.
- It's kind for people with learning difficulties.
- Some people have ear defenders for when it gets too loud in class. It would be good to have a space not too crowded or loud.

All of the pupils thought the plan to use 2 classrooms as an ASC was a good idea and it sounded fine. The pupils were keen that the classrooms had soft toys, fidget toys and soft areas so that pupils won't hurt themselves.

Both groups of pupils didn't think it would have any impact on the school. However, in relation to what it would mean for the pupils they thought the following:

- No issues in playground.
- Our playground is massive and we only share with P6s & P7s so it would not create any issues.
- It would be helpful to have an ASC
- A couple of classes around us have PSAs who help people with learning difficulties but having an ASC would be very helpful.
- One teacher in each class with 10 people, would make a big difference.
- PSAs would have a lot more time.

All of the pupils thought that it would be OK and would make no difference to their time in school. They also raised that the ASC would be at a separate part of the building and it would be easier for those children as they would have their own open space and suggest different play times. They thought it wouldn't impact them but would impact others with disabilities. Pupils also advised that not all of the classrooms in this area are being used so it is more helpful for them to be used.

No concerns raised in relation to more children attending the school. They advised it would not be a problem as ASC would be better for the children's education. Pupils advised there is plenty of space in the dinner hall and playground but they could go at different times. The only concern raised was whether there would be more composite classes as one pupil did not wish to be in a composite class.

All of the pupils thought it would be better for the children to go to Strathallan rather than Valley as it would make more sense for local children to attend this school as it could be a shorter drive.

All of the pupils thought it would be better for children to walk to school where possible so they could walk with friends. One pupil also advised that if you live near the bus stop, you can get the bus.

The pupils advised that the most important parts to them about their school are as follows:

- I like our rights in this school as we have rights to talk and listen, to go outside snacks and breaks.
- We have our sensory room for people with learning difficulties, I like this this. The sensory room helps children's learning.
- I like how we have a library beside P7 as we have the right to read.
- I like how we have a big gym hall.
- The teachers are nice provide a good education, welcoming place, can make friends instantly and you always have someone to talk to.
- Pupils are well respected in this school and if someone is mean it gets sorted instantly.

P6 (13 pupils in total)

Only half of the pupils had heard about the consultation proposal to set up a new ASC in Strathallan Primary School as it had been discussed in school that morning.

All of the pupils in both groups thought the proposal was a good idea, with one group adding that the school has space. One child added that some children who might have a hard time at school being in a busy class, it would be good for them to have time in a smaller class to learn better and it wouldn't have a great impact on school. Another suggested that it's good if they are finding work hard as they can take themselves away to a space and then know how to do it.

The children advised there are plenty classrooms therefore it doesn't have an impact. One advised that they have a music room and a sensory room. Another child suggested that for P1s joining the school it would be weird as they are normally at the bottom of the school. They might be confused with this. The pupils stated that it would not affect the upper school pupils.

None of the children thought it would make any difference to their time in school and it would be exactly the same. They noted the following:

- It might be strange at the start but we would get used to it.
- It would be a good thing because people will have more space to have a quiet area away from noise.
- It would be nice to get rid of some rooms as there are so many.
- It would be good because people will get the help they need to learn.
- Only the infants might feel a difference not being in the same area.

All of the pupils said that they would not have any concerns for more pupils attending the school but wondered if the pupils would have different playtimes and dinner slots.

Pupils from one group thought it would be better for children to be educated locally and the other group thought the school was less crowded so there would be an equal balance.

In relation to walking to school, one child did not think this was a good idea as they might find it a bit hard, they might not know where they are going and they don't know anyone here. A number of pupils though it would be healthier walking to school to give more freedom, good for the legs and fresh air.

The pupils advised that the most important parts to them about their school are as follows:

- School is good because many schools don't have access to beanbags
- Dressing up, games and books etc which we have
- You can meet new friends and people.
- Lots of teachers and the encouragement and help when I'm stuck
- Lots of access to things such as music.
- Interaction with janitors and cleaners
- Size of school, the amazing teachers and the awards for achievements
- Safe and good environment and opportunity for forest walks
- The education and learning is fun, teachers are supportive and help us learn in different ways and teachers will explain it in different ways until we get it.

P7 (14 pupils in total)

All of the pupils had heard about the consultation proposal to set up a new ASC in Strathallan Primary School as it had been discussed in school. It had not been discussed at home with parents/carers.

Pupils from both groups though the proposal was a good thing as it would help a lot of people learn, would be good if people needed a less crowded space or a quiet space to work. All thought it was positive.

All children thought the plan to use 2 classrooms for the ASC sounded OK. One pupil advised that the P1 class would need to move and it would be an adjustment but it will work. Another advised if it is needed it should be done and the school is a good space and is not crowded.

They thought having an ASC within the school would feel different and it would take time to get used to. One child added that it wouldn't make a difference for people in the upper area, except that the P7s currently use a spare class for geography.

When asked if they thought it would make any difference to their time in school they didn't think so. One child advised that they have separate areas so there would be no impact on learning, it would only impact on the P1s having to move classrooms.

All of the pupils thought there would be no impact therefore had no concerns for more pupils attending the school. The only concern they expressed is whether the dinner hall was big enough but they could have different times.

All of the pupils thought it would make sense for pupils from the area to attend Strathallan ASC rather than Valley ASC, with some thinking it would be a shorter distance.

All pupils thought it would be better for the children to be able to walk to school.

The pupils advised that the most important parts to them about their school are as follows:

- Lunchtime is the best because you can play football.
- Our playground as we have such a big playground with grass.
- Good that we have games and some of the stuff we have is amazing compared to other schools.
- We have a great gym hall.
- Great staff who help when you are injured, supportive and nurturing.
- Mr. Cobb is a good Headteacher.
- Different spaces to go to if you are stressed or if you want a quiet/calming space the library is there.
- There are 2 playgrounds and the P7 pupils have their own playground space.

Pupils within our ASC provisions

There are 29 pupils who attend the ASC provision at Cairneyhill Primary School, 40 pupils who attend the ASC provision at Pitreavie Primary School and 39 pupils who attend the ASC within Valley Primary School, some pupils on a full-time basis and

some pupils on a part-time basis in these settings. Two teachers from the Supported Learners Team held consultation sessions with a number of pupils in these settings to ensure pupils within these three ASC provisions had the opportunity to contribute to discussion around the proposal. The results of both consultations are included below:

Pupil Consultation - Additional Support Classes (ASC provision)

Date range 6th and 7th February 2025

Pupil stage range P2- P7

ASC Provisions – Valley, Cairneyhill and Pitreavie.

Key information

Consultation was planned with 19 pupils

15 pupils were interviewed – the other 4 chose not to participate.

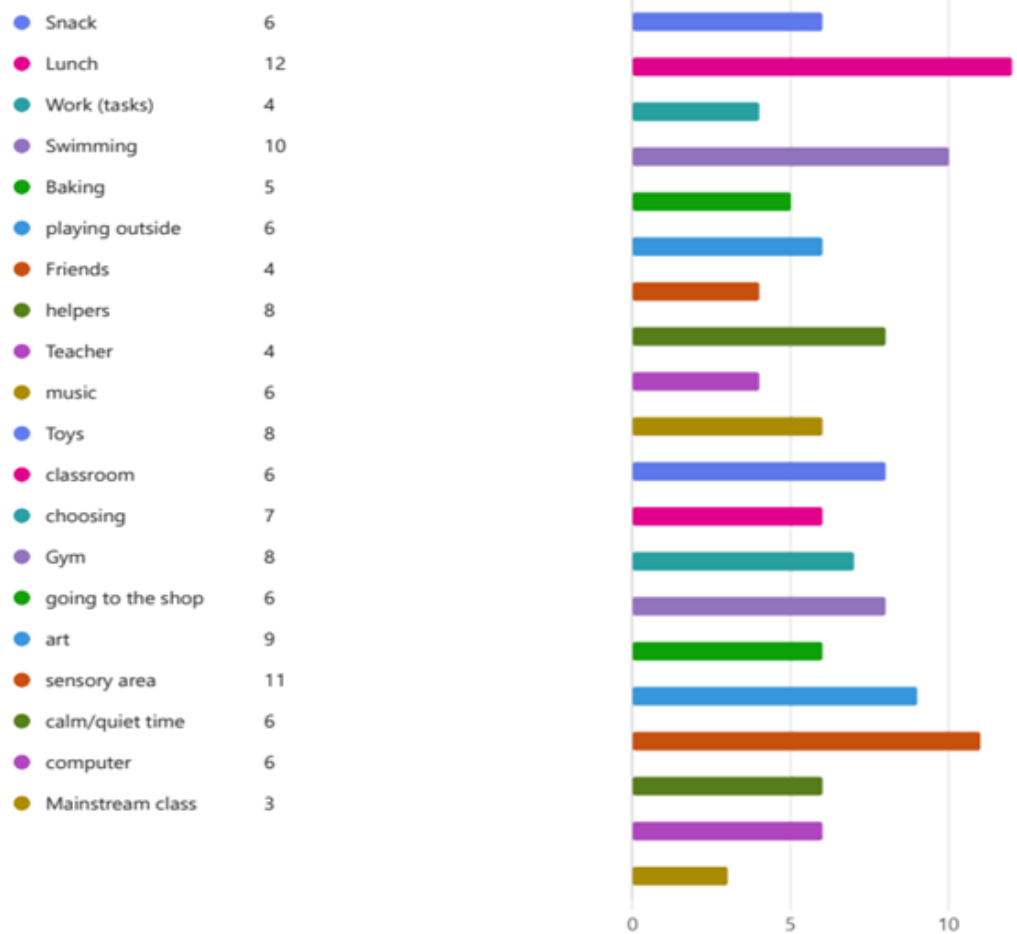
2 out of 15 pupils could not engage with the consultation

Pupils had a known adult present when required.

Almost all pupils would consider communication to be difficult.

Responses:

3. What do you like about being in an ASC Class?



Pupils provided a mixture of responses to demonstrate what was important for them in an ASC provision. However, access to swimming, lunch and a sensory area was stated by most.

4. What do you think is okay in the ASC?

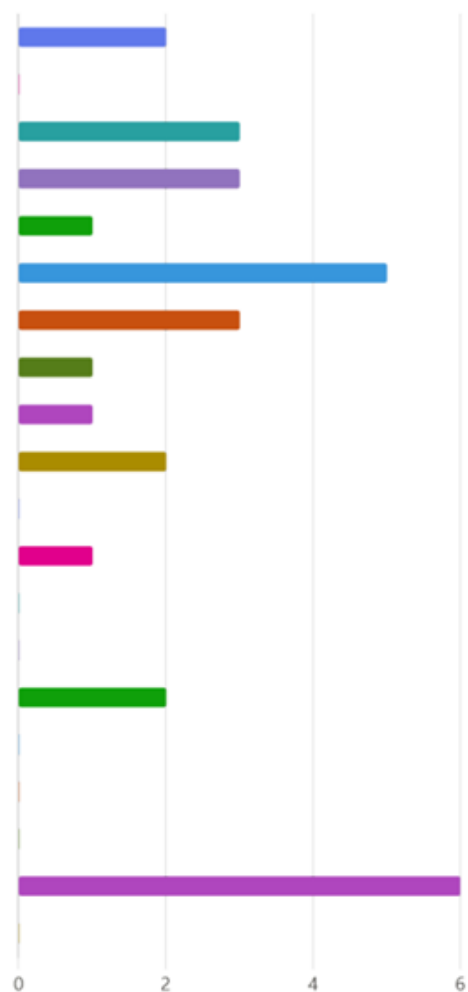
● Snack	3
● Lunch	1
● Work (tasks)	1
● Swimming	0
● Baking	3
● Playing outside	2
● Friends	1
● Helpers	0
● Teacher	3
● Music	1
● Toys	2
● Classroom	1
● Choosing	3
● Gym	3
● Going to the shop	2
● Art	3
● Sensory Area	1
● Calm/Quiet area	1
● computer	2
● Mainstream class	1



Only 8 pupils were able to use 'it's okay' as an option

5. What do you not like about the ASC?

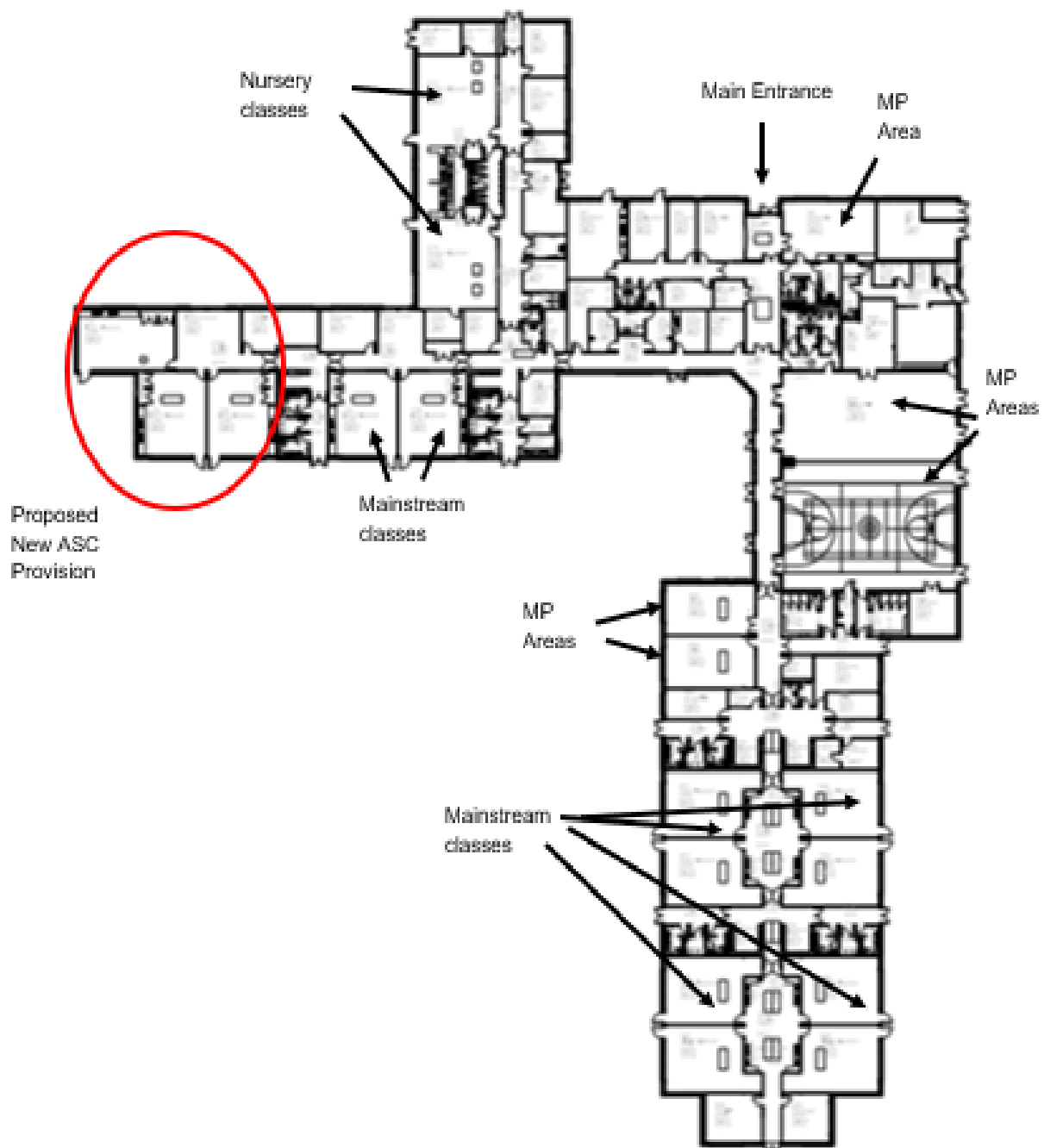
● Snack	2
● Lunch	0
● Work (tasks)	3
● Swimming	3
● Baking	1
● Playing outside	5
● Friends	3
● Helpers	1
● Teacher	1
● Music	2
● Toys	0
● Classroom	1
● Choosing	0
● Gym	0
● Going to the shop	2
● Art	0
● Sensory Area	0
● Calm/quiet area	0
● computer	6
● Mainstream class	0



As with any tools that use 'like/dislike' the possibility is that the pupils do not want to choose the one that seems sad. However, those who did use this option mostly identified being outside and the computer as things they didn't like.

Appendix I:
Any relevant plans, maps and photographs

Proposed Location of new ASC Provision in Strathallan Primary School



Part 1: Background and information

Title of proposal	Proposal is to establish a new ASC provision in Strathallan Primary School from Monday 18 August 2025.
Brief description of proposal (including intended outcomes & purpose)	<p>In line with the vision outlined in Building Fife's Future: School Estate Strategy (28 August 2018) and supported by the Scottish Government's Learning Estate Strategy: Connecting People, Places and Learning (2019), the proposed new ASC provision within Strathallan Primary School will provide enhanced facilities in modern and flexible learning spaces to allow pupils to experience a wide-ranging curriculum offer, appropriate to their needs.</p> <p>The main driver for the establishment of a new enhanced provision to serve the Kirkcaldy West area, is based on the current and projected number of pupils requiring this enhanced support provision across this area.</p> <p>Financial investment will be required within Strathallan Primary School to establish this new enhanced provision. The planned occupation date is from Monday 18 August 2025.</p> <p>The proposed maximum capacity of this provision within Strathallan Primary School will be 20 full-time spaces for children.</p> <p>The proposal has been consulted in accordance with the Schools (Consultation) (Scotland) Act 2010.</p>
Lead Directorate / Service / Partnership	Shelagh McLean, Head of Service, Education
EqIA lead person	Kim Lawson, Compliance Officer, Education Directorate
EqIA contributors	All relevant consultees, as defined by the Schools (Consultation) (Scotland) Act 2010, were invited to participate in the formal consultation process. The Equality

	Impact Assessment was contributed to by a range of staff within Fife Council.
Date of EqlA	15 April 2025

How does the proposal meet one or more of the general duties under the Equality Act 2010? (Consider proportionality and relevance on p.12 and see p.13 for more information on what the general duties mean). If the decision is of a strategic nature, how does the proposal address socio-economic disadvantage or inequalities of outcome?)

General duties	Please Explain
Eliminating discrimination, harassment and victimisation	<p>This proposal will provide opportunities for children and the community to appreciate diversity and to recognise and value the strength and potential in everyone. This mutual understanding creates a culture of acceptance and reduces the stigma often associated with learning disabilities.</p> <p>Interacting with peers of diverse abilities encourages meaningful friendships, team building and co-operation. By embracing inclusion, the school will continue to create an atmosphere which celebrates differences and encourages mutual respect between pupils.</p>
Advancing equality of opportunity	<p>The establishment of this new ASC provision within Strathallan Primary School will allow children to attend an enhanced provision within their locality and may reduce the need for transportation across the Kirkcaldy area. The mainstream provision and allocation of resources will not be affected by the establishment of this enhanced provision. Mainstream pupils will still have access to targeted interventions, Pupil Support Assistants and Support for Learning</p>

	<p>Teacher to ensure their needs are met effectively.</p> <p>Children within the locality who do require access to an enhanced provision can attend a provision within the heart of their own community. This would include children who currently have a shared placement between mainstream school and an enhanced provision.</p> <p>The creation of an enhanced provision within Strathallan Primary School supports the understanding of inclusive education.</p>
Fostering good relations	<p>The school benefits from large extensive grounds for pupils to enhance their outdoor learning opportunities. In addition, there is an Out of School club within the school which offers childcare for parents/carers after school.</p>
Socio-economic disadvantage	<p>With the establishment of enhanced provision within a local area, there should be a reduction in the need for transport for individual children.</p>
Inequalities of outcome	<p>The needs of children requiring access to an enhanced support provision for all or part of their learning, will be accommodated in well considered accessible facilities that will support them from their arrival on site, throughout the day, in formal learning and in informal social times.</p> <p>Creative and inviting learning spaces will support additional opportunities for children to learn collaboratively in all curricular areas, taking account of the skills they require for learning, life and work. Opportunities for integration into the wider school community will be promoted and offered where appropriate, ensuring the children feel part of the Strathallan Primary School community.</p>

Having considered the general duties above, if there is likely to be no impact on any of the equality groups, parts 2 and 3 of the impact assessment may not need to be completed. Please provide an explanation (based on evidence) if this is the case.

Part 2: Evidence and Impact Assessment

Explain what the positive and / or negative impact of the policy change is on any of the protected characteristics

Protected characteristic	Positive impact	Negative impact	No impact
Disabled people	The needs of children requiring access to an enhanced support provision for all or part of their learning, will be accommodated in well considered accessible facilities that will support them from their arrival on site, throughout the day, in formal learning and in informal social times.		
Sexual orientation			No impact
Women			No impact
Men			No impact
Transgendered people			No impact
Race (includes gypsy travellers)			No impact
Age (including older people aged 60+)	May impact on grandparents who have a shorter distance to travel to collect pupils from school.		
Children and young people	School buildings with multi-purpose space available to provide greater flexibility		

	and enhanced opportunities for pupils.		
Religion or belief			No impact
Pregnancy & maternity			No impact
Marriage & civil partnership			No impact

Please also consider the impact of the policy change in relation to:

	Positive impact	Negative impact	No impact
Looked after children and care leavers	Additional spaces to ensure the needs of care experienced pupils can be met e.g. multi-agency meetings can take place		
Privacy (e.g. information security & data protection)			No impact
Economy			No impact

1.0 Please record the evidence used to support the impact assessment. This could include officer knowledge and experience, research, customer surveys, service user engagement.

2.0 Any evidence gaps can also be highlighted below.

Evidence used	Source of evidence
1. Knowledge of existing school provision/practice	Officer discussion/consultation
2. School facilities and accommodation	School layout plans

3. Feedback received from relevant parties during the statutory consultation process	Consultation Response Forms, public meetings and pupil consultation, report from HMI Education Scotland
Evidence gaps	Planned action to address evidence gaps

Part 3: Recommendations and Sign Off

(Recommendations should be based on evidence available at the time and aim to mitigate negative impacts or enhance positive impacts on any or all of the protected characteristics).

Recommendation	Lead person	Timescale
1. Ensure any pupil wishing to relocate to this provision have an enhanced transition prior to relocating to the new school	Headteachers	August 2025 onwards

Sign off

(By signing off the EqIA, you are agreeing that the EqIA represents a thorough and proportionate analysis of the policy based on evidence listed above and there is no indication of unlawful practice, and the recommendations are proportionate.

Date completed:	Date sent to Community Investment Team: Enquiry.equalities@fife.gov.uk
Senior Officer: Shelagh McLean	Designation: Head of Service, Education

FOR COMMUNITY INVESTMENT TEAM ONLY

EqIA Ref No.	
Date checked and initials	

