



Education Directorate
Improving life chances for all



Education Directorate

Statutory Consultation on a Proposal to Rezone the catchment areas of Kirkcaldy West and Dunnikier Primary Schools

Public Meetings

Kirkcaldy West Primary School – Monday 3 February 2025 6-7pm
Dunnikier Primary School – Monday 10 February 2025 6-7pm

Shelagh McLean
Head of Service, Education



Education Directorate
Improving life chances for all



Agenda

Background, rationale and implications in respect of the proposal to rezone the catchment areas of Kirkcaldy West and Dunnikier Primary Schools

Consultation Process and Timeline

Questions



Context

- Statutory duty to provide adequate and efficient provision of education
- Statutory duty of 'Best Value in Public Services'
- Town Centre regeneration and responding to the housing emergency across the Kirkcaldy Town Centre area cannot be supported in the Kirkcaldy West Primary School catchment area
- Desire to support the development of brownfield sites
- Accommodation pressures exist with Kirkcaldy West and provide challenges for the delivery of the full curriculum experiences and outcomes for pupils at Kirkcaldy West Primary School

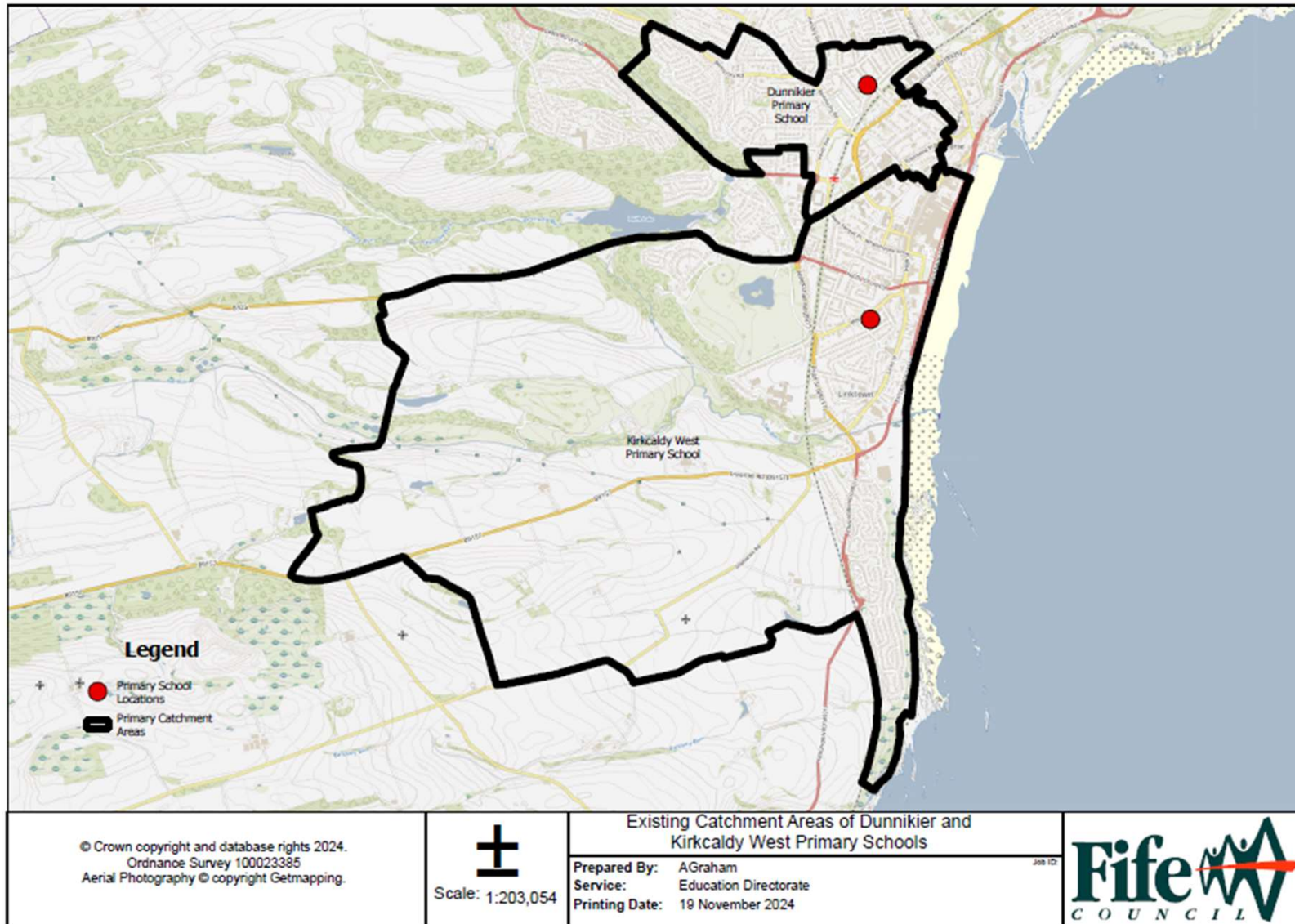


The Proposal

- Rezone the primary catchment areas of Kirkcaldy West and Dunnikier Primary Schools, from Friday 4 July 2025.
- If proposal is approved, the changes to the catchment areas would be implemented from Friday 4 July 2025 and would apply to all applications for enrolment, including placing requests, made from that date.
- Nursery aged pupils beginning Primary 1 in August 2025 will enrol in their existing catchment primary school.
- For Primary 7 pupils transferring to S1 in August 2025, transfer arrangements will continue in line with the existing catchment secondary school transfer process.
- There will be no changes to nursery provision as both school nurseries are currently in same nursery area
- There are no proposed changes to the RC primary and RC secondary schools associated with these catchment areas
- There are no proposed changes to the Balwearie High School catchment area

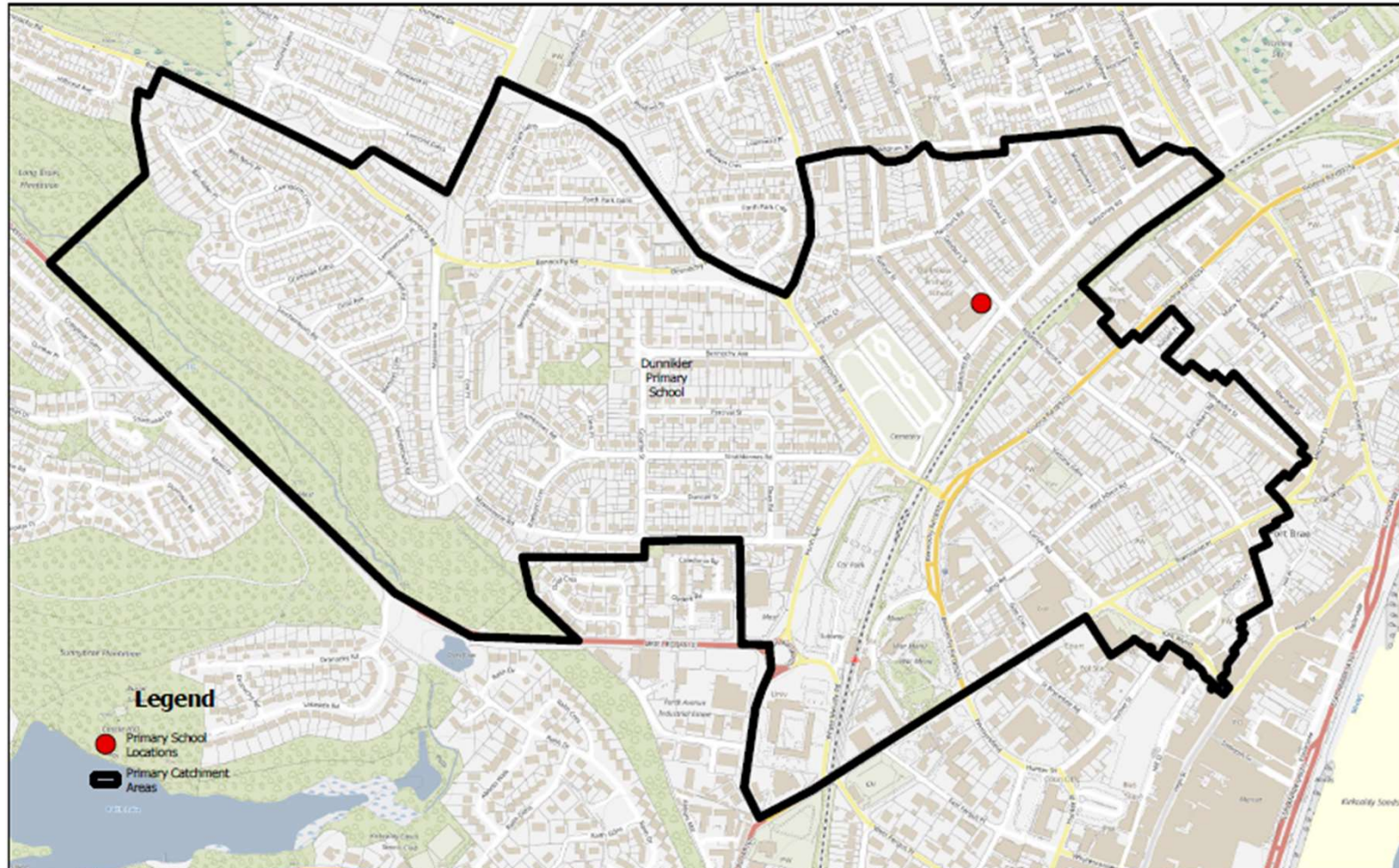


Existing Catchment Areas of Kirkcaldy West and Dunnikier Primary Schools





Existing Catchment Area of Dunnikier Primary School



Legend

- Primary School Locations
- Primary Catchment Areas

© Crown copyright and database rights 2024.
Ordnance Survey 100023385
Aerial Photography © copyright Getmapping.

Scale: 1:203,054

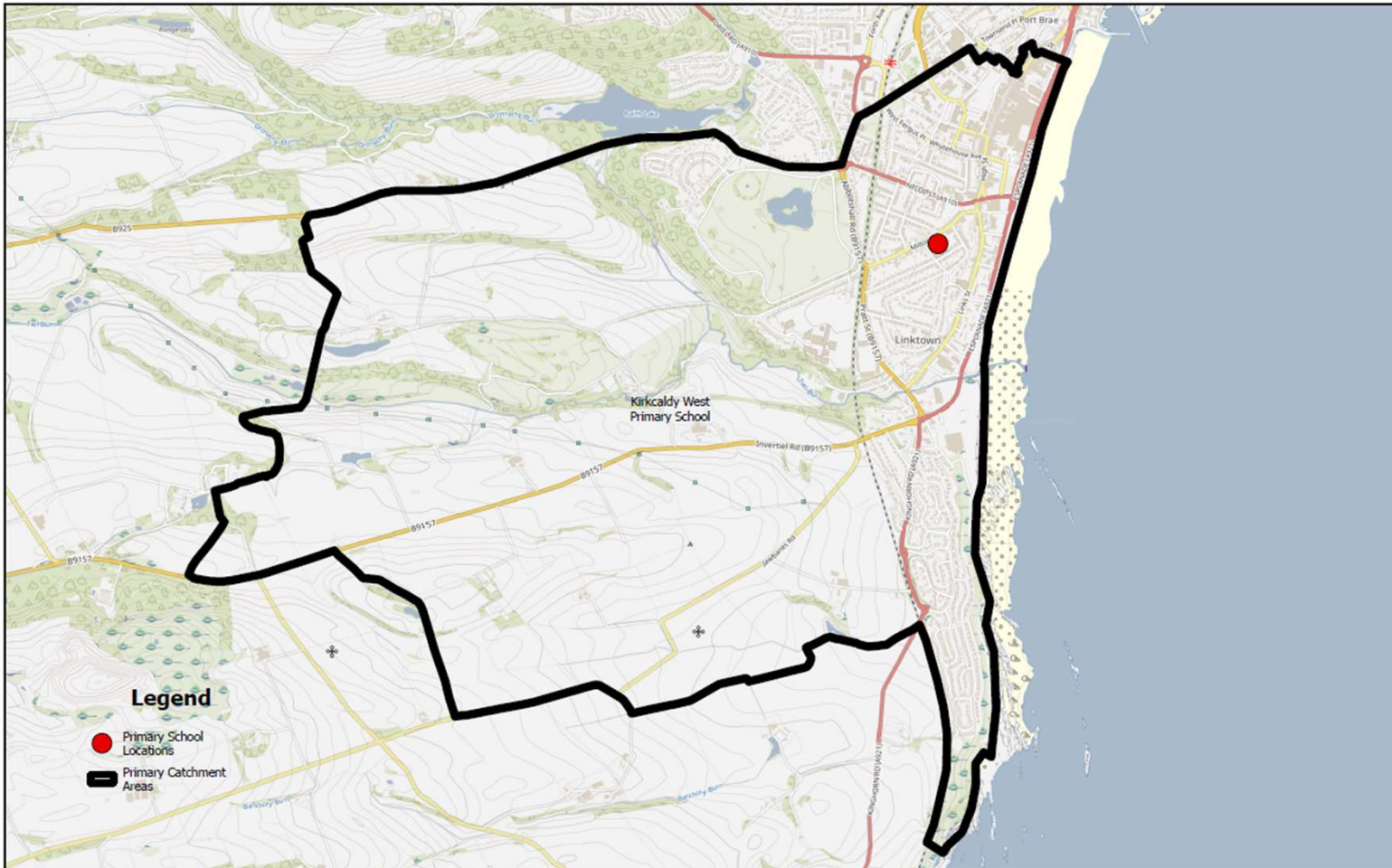
Existing Catchment Area of Dunnikier Primary School

Prepared By: AGraham
Service: Education Directorate
Printing Date: 19 November 2024





Existing Catchment Area of Kirkcaldy West Primary School



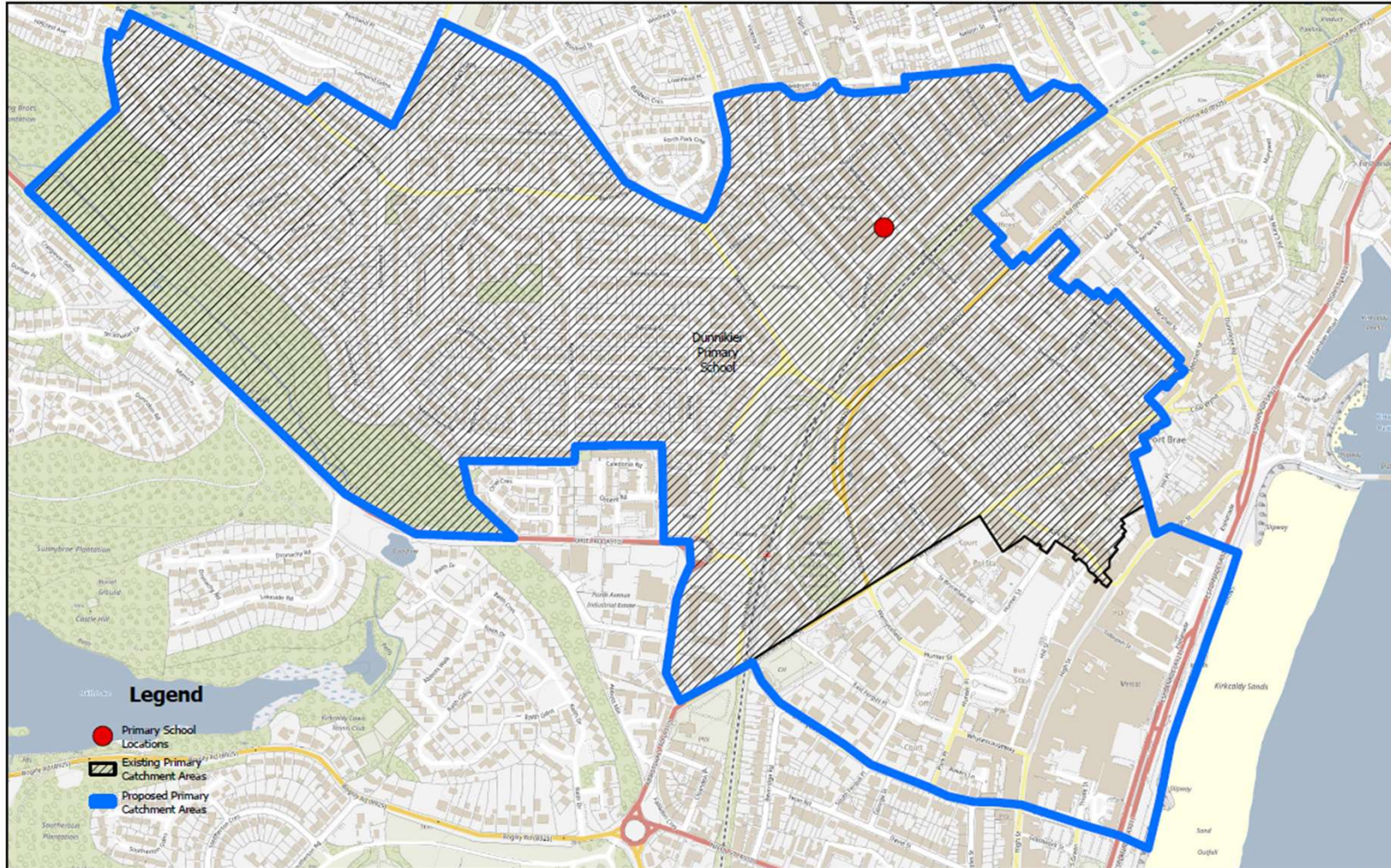


Rationale

- Projected over-occupancy of Kirkcaldy West Primary School from all proposed housing in the catchment area
- Development of brownfield sites across Kirkcaldy Town Centre to deliver much needed housing
- Kirkcaldy West Primary School projected school roll still expected to be operating above permanent capacity
- Roll out of free-school meals for P6 and P7 across the estate and the impact that this will have on Kirkcaldy West
- Lack of multi-purpose areas across the school
- No option to extend the school due to site curtilage, as this would have a detrimental impact on space available both internally and externally
- Projected under occupancy at Dunnikier Primary School
- Both schools in close proximity to each other



Proposed Dunnikier Primary School Catchment Area



© Crown copyright and database rights 2024.
Ordnance Survey 100023385
Aerial Photography © copyright Getmapping.

±
Scale: 1:203,054

Proposed Dunnikier Primary School Catchment Area

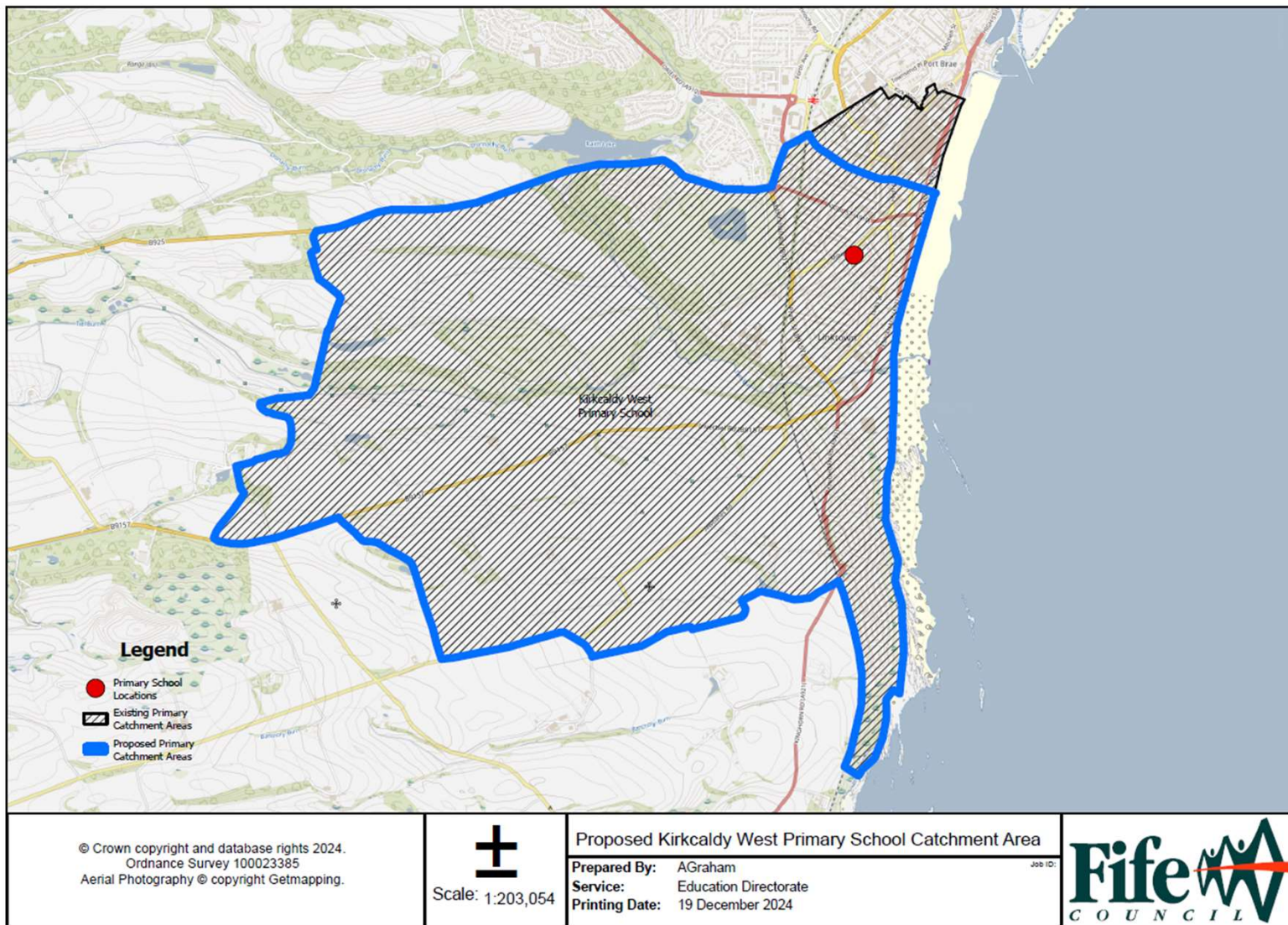
Prepared By: AGraham
Service: Education Directorate
Printing Date: 19 December 2024

JOB ID:



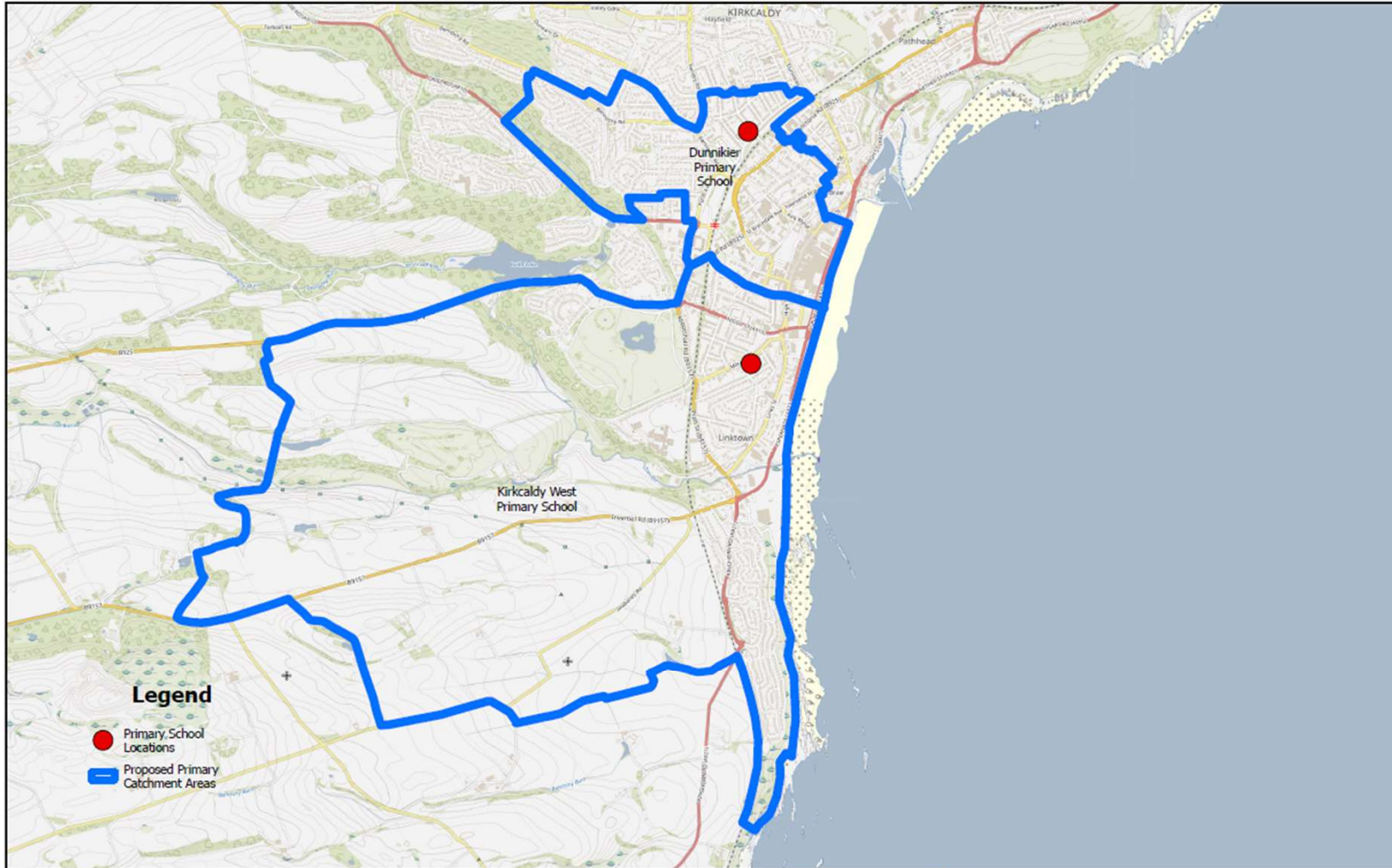


Proposed Kirkcaldy West Primary School Catchment Area

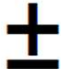




Proposed Catchment Areas of Kirkcaldy West and Dunnikier Primary Schools



© Crown copyright and database rights 2024.
Ordnance Survey 100023385
Aerial Photography © copyright Getmapping.


Scale: 1:203,054

Proposed Dunnikier and Kirkcaldy
West Primary School Catchment Areas

Prepared By: AGraham
Service: Education Directorate
Printing Date: 19 November 2024

Job ID:





Projected School Rolls

The school roll projections for Dunnikier Primary School for the next 10 years are as follows (based on the 2023 census figures)

Kirkcaldy West Primary School

Year	2024	2025	2026	2027	2028	2029	2030	2031	2032	2033
Roll	430	420	416	424	429	427	439	443	446	440
Classes	15	15	15	16	16	16	16	16	16	16

Dunnikier Primary School

Year	2024	2025	2026	2027	2028	2029	2030	2031	2032	2033
Roll	344	331	316	300	287	300	308	302	292	297
Classes	13	12	12	12	11	11	11	11	11	11



Housing Development in the catchment areas

Fife Council's Adopted Local Development Plan

Housing Development in the Kirkcaldy West catchment area continues to be a challenge – statutory planning responses from Education, to previous applications, has highlighted limitations in school capacity

New Brownfield sites – a number cannot be progressed due to the capacity issues at Kirkcaldy West Primary School

Site Name	Catchment Area	Local Development Plan (FIFEplan Site Capacity)	HLA 2023 Site Capacity	Qty within planning application	Planning application	Planning Consent	Year Start	Year Finish
257/261 High Street	Kirkcaldy West PS	KIR161	-	n/a	No	Yes	2023	2024
Kirkcaldy West SDA	Kirkcaldy West PS	KIR176	1200	n/a	No	No	2029	Post 2033
23 Kirk Wynd	Dunnikier PS	KIR252	6	6	19/01010/ FULL	July 2019	2023	



Proposed Streets to be rezoned

- St Brycedale Avenue (South) rezoned from Kirkcaldy West PS to Dunnikier PS
- St Brycedale Road rezoned from Kirkcaldy West PS to Dunnikier PS
- Hunter Street rezoned from Kirkcaldy West PS to Dunnikier PS
- Hunter Place rezoned from Kirkcaldy West PS to Dunnikier PS
- Wemyssfield area rezoned from Kirkcaldy West PS to Dunnikier PS
- Hill Street rezoned from Kirkcaldy West PS to Dunnikier PS
- Park Place rezoned from Kirkcaldy West PS to Dunnikier PS
- Part of the High Street rezoned from Kirkcaldy West PS to Dunnikier PS
- Whytescauseway rezoned from Kirkcaldy West PS to Dunnikier PS
- Bakers Lane rezoned from Kirkcaldy West PS to Dunnikier PS
- part of Whytehouse Avenue (East) rezoned from Kirkcaldy West PS to Dunnikier PS
- part of West Fergus Place (East) rezoned from Kirkcaldy West PS to Dunnikier PS
- part of South Fergus Place (East) rezoned from Kirkcaldy West PS to Dunnikier PS
- East Fergus Place rezoned from Kirkcaldy West PS to Dunnikier PS
- Part of Abbotshall Road rezoned from Kirkcaldy West PS to Dunnikier PS
- Charlotte Street rezoned from Kirkcaldy West PS to Dunnikier PS
- part of the Esplanade zoned from Kirkcaldy West PS to Dunnikier PS



Educational Benefits

As part of the Schools (Consultation) (Scotland) Act 2010, the local authority must prepare an educational benefits statement which includes the likely effects of a relevant proposal.

The educational benefits of this proposal include:

1. parents will continue to be able to choose the catchment primary school associated with their postal address
2. catchment realignment will remove uncertainty for parents in the area who may not be able to gain a place due to oversubscription of pupils for Kirkcaldy West Primary School should the housebuilding be granted planning consent
3. distribution of pupils will reduce accommodation pressures within Kirkcaldy West Primary School as Kirkcaldy West only has 11 permanent classrooms, and limited multi-purpose space.
4. The access to multi-purpose areas will increase these activities across the school providing more flexibility to deliver the full breadth of the curriculum
5. reducing the constant accommodation pressures at Kirkcaldy West Primary School and ensuring that curricular activities can be delivered outwith the core classroom space
6. opportunity for peers living in the same geographical area to attend the same school
7. sustaining or increasing the school roll at Dunnikier Primary School



Education Directorate
Improving life chances for all



Consultation Process

Statutory consultation in accordance with the Schools (Consultation) (Scotland) Act 2010

Council required to consult for a minimum of 30 school days

Statutory consultation period – Tuesday 21 January 2025 to Friday 7 March 2025

Public Meetings – Monday 3rd February at Kirkcaldy West Primary School and Monday 10th February at Dunnikier Primary School

Pupil consultation with a range of pupils from P4-P7 in both schools – usually around 25% of the total at each primary stage

Education Scotland involvement

Consultation Report

Decision by Cabinet Committee on 29 May 2025.



Timeline

Thursday 9 January 2025	Consultation proposal considered by Cabinet Committee
Monday 20 January 2025	Parents and other statutory consultees to receive letters informing them of the dates for the statutory consultation.
Tuesday 21 January 2025	Consultation live Tuesday 21 January to Friday 7 March
Tuesday 21 January – Friday 7 March 2025	Consultation period (31 school days)
Meetings	<p>Public meetings</p> <ul style="list-style-type: none"> • Kirkcaldy West PS – Monday 3 February 2025 from 6-7 pm • Dunnikier PS – Monday 10 February 2025 from 6-7 pm <p>Drop-in sessions</p> <ul style="list-style-type: none"> • Kirkcaldy West PS – Monday 3 February 2025 at 8.45-9.30 and 5-6 pm before the public meeting • Dunnikier PS – Monday 10 February 2025 at 8.45-9.30 am and 5-6 pm before the public meeting • Kirkcaldy West PS – Tuesday 11 February 2025 at 2.45-3.30 pm • Dunnikier PS – Tuesday 18 February 2025 at 2.45-3.30 pm
Friday 7 March 2025	Consultation close
Friday 14 March 2025	Fife Council to submit information to Education Scotland
Monday 17 March – Friday 4 April 2025	Education Scotland (3 weeks to visit the schools, review the proposal document and responses and write their report)
7 April – 18 April 2025	Easter holidays
Monday 7 April 2025	Report received back from Education Scotland
Friday 11 April 2025	Sign off report from Education Scotland
6 May 2025	Publish Consultation Report, in conjunction with Education Scotland (3 clear weeks before committee is due to take decision)



Discussion
Have your say at
www.fife.gov.uk/catchmentreviewKirkcaldy
or
send comments to:
Sustainableschoolestate.enquiries@fife.gov.uk



ALL SERVICES

Home / All Services / Education

Managing Our School Estate

Latest news

Principles of managing the Estate

Curriculum for Excellence

Legislative documents

Dunfermline Learning Campus

Lochgelly South PS

New Inverkeithing/SW Fife High School

Strathallan Primary School Additional Support Class Provision Consultation

Dalgaty Bay Primary School Additional Support Class Provision Consultation

Rezone of Kirkcaldy West and Dunnikier Primary Schools Consultation

Click on
tile on
website

