
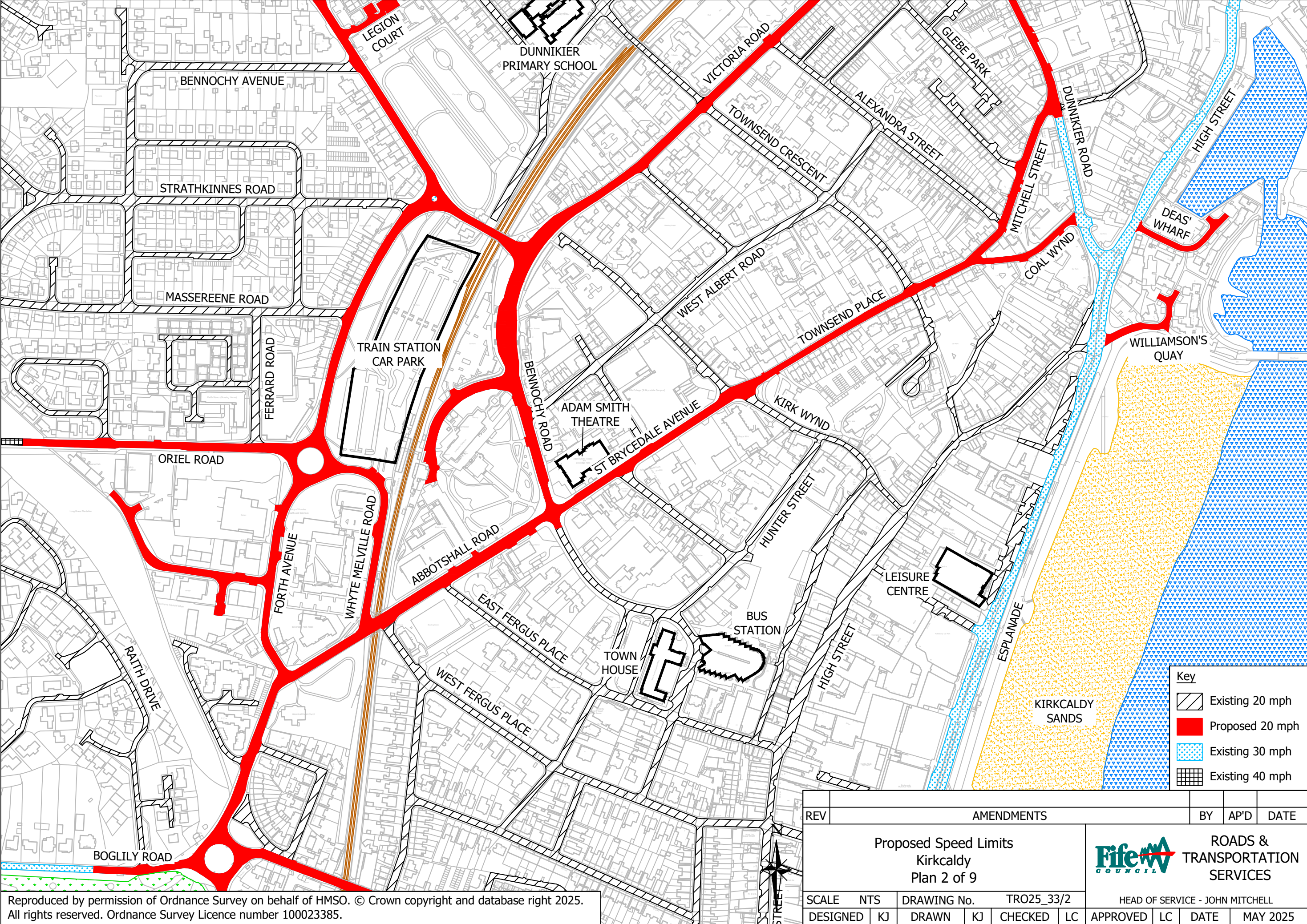



Reproduced by permission of Ordnance Survey on behalf of HMSO. © Crown copyright and database right 2025.
All rights reserved. Ordnance Survey Licence number 100023385.

REV	AMENDMENTS							BY	AP'D	DATE	
Proposed Speed Limits Kirkcaldy Plan 1 of 9							<div>ROADS & TRANSPORTATION SERVICES</div>				
SCALE		NTS		DRAWING No.		TRO25_33/1		HEAD OF SERVICE - JOHN MITCHELL			
DESIGNED		KJ		DRAWN		KJ		CHECKED		LC	
								APPROVED		LC	
								DATE		MAY 2025	



Reproduced by permission of Ordnance Survey on behalf of HMSO. © Crown copyright and database right 2025.
All rights reserved. Ordnance Survey Licence number 100023385.

REV	AMENDMENTS							BY	AP'D	DATE
Proposed Speed Limits Kirkcaldy Plan 2 of 9							 ROADS & TRANSPORTATION SERVICES			
SCALE	NTS	DRAWING No.				TRO25_33/2		HEAD OF SERVICE - JOHN MITCHELL		
DESIGNED	KJ	DRAWN	KJ	CHECKED	LC	APPROVED	LC	DATE	MAY 2025	

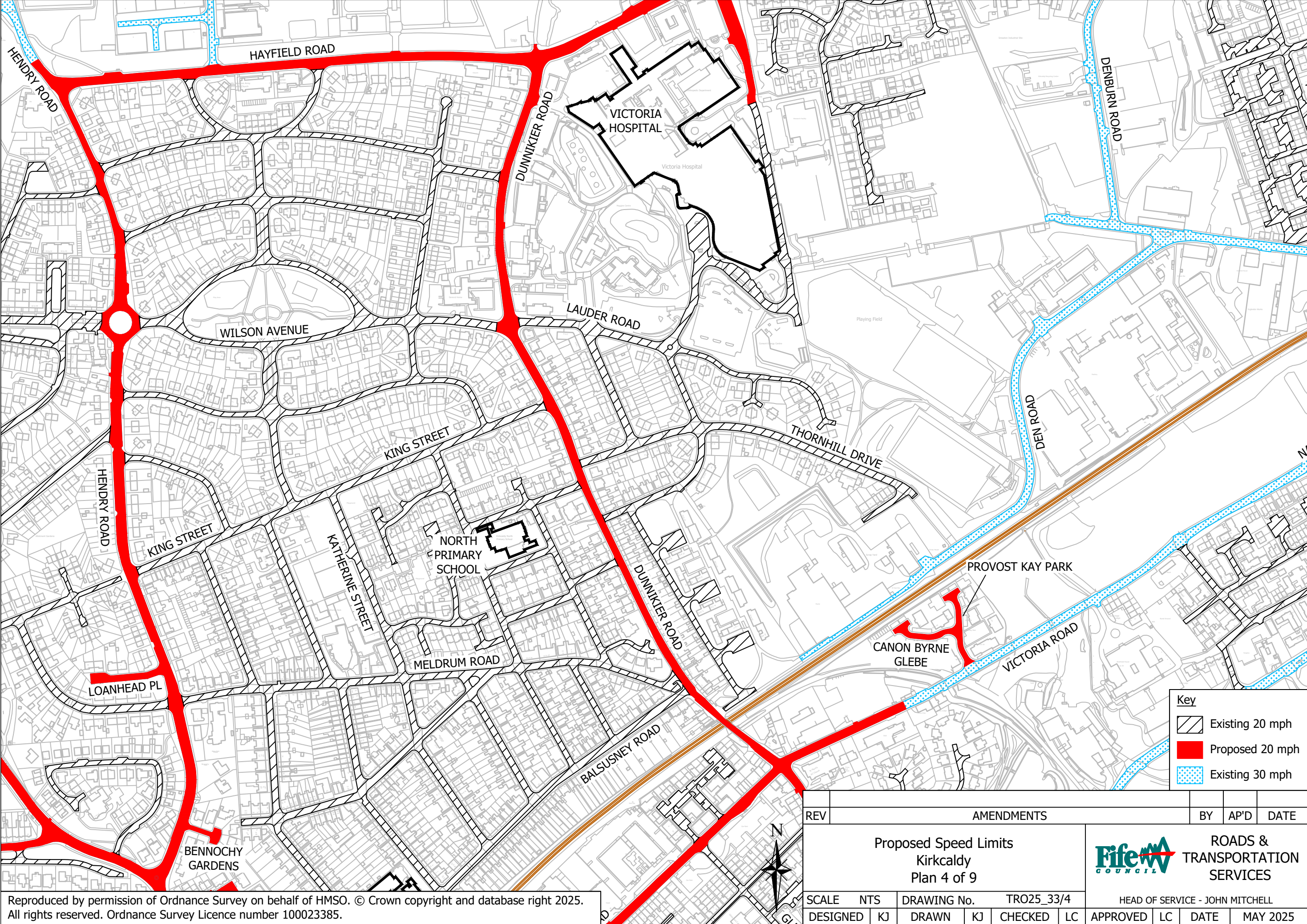


Key

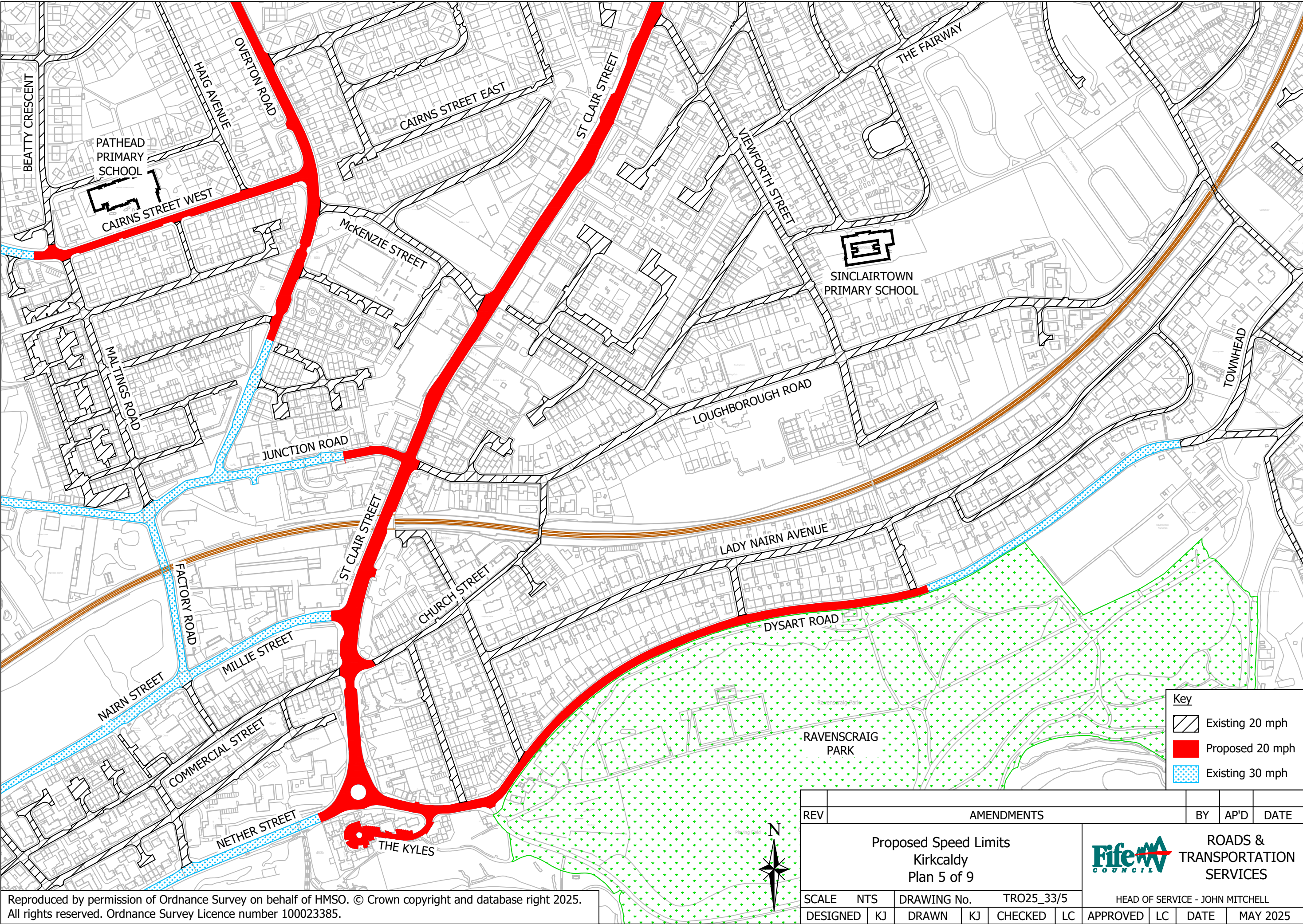
- Existing 20 mph
- Proposed 20 mph
- Existing 30 mph
- Existing 40 mph

Reproduced by permission of Ordnance Survey on behalf of HMSO. © Crown copyright and database right 2025.
All rights reserved. Ordnance Survey Licence number 100023385.


REV		AMENDMENTS				BY	AP'D	DATE
		Proposed Speed Limits Kirkcaldy Plan 3 of 9				ROADS & TRANSPORTATION SERVICES		
SCALE	NTS	DRAWING No.		TRO25_33/3		HEAD OF SERVICE - JOHN MITCHELL		
DESIGNED	KJ	DRAWN	KJ	CHECKED	LC	APPROVED	LC	DATE MAY 2025

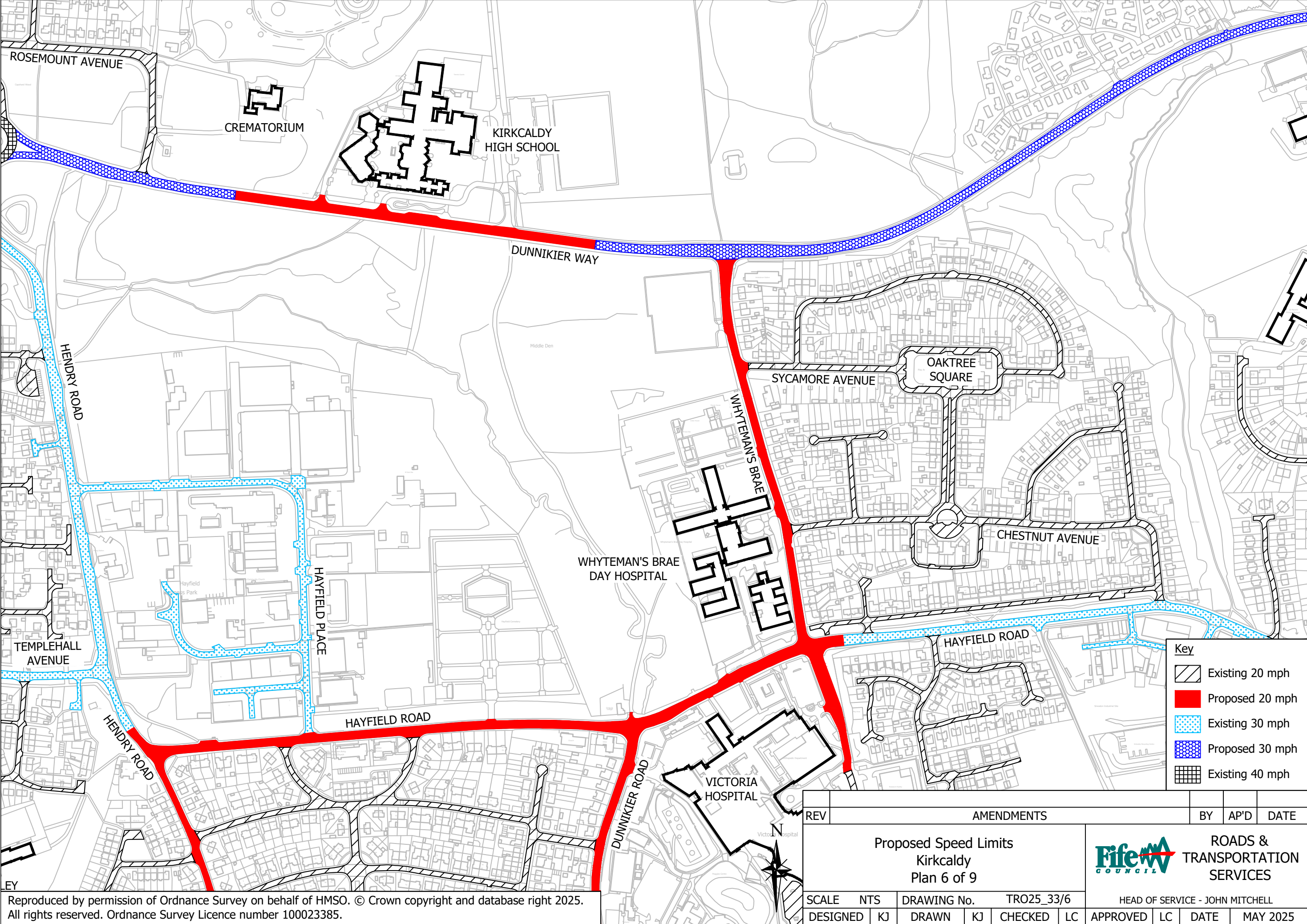


Reproduced by permission of Ordnance Survey on behalf of HMSO. © Crown copyright and database right 2025. All rights reserved. Ordnance Survey Licence number 100023385.




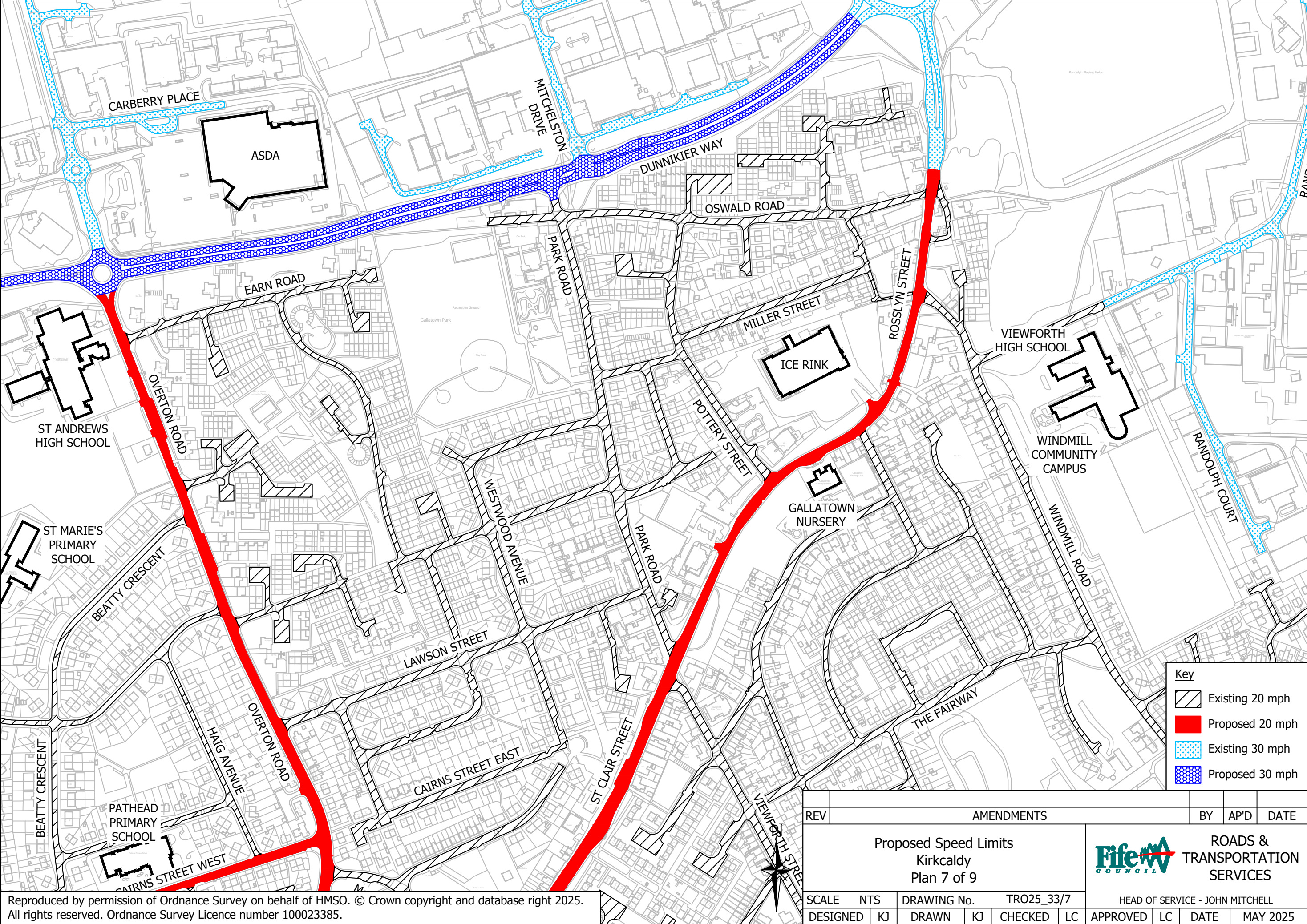
Reproduced by permission of Ordnance Survey on behalf of HMSO. © Crown copyright and database right 2025.
All rights reserved. Ordnance Survey Licence number 100023385.

REV		AMENDMENTS				BY	AP'D	DATE
		Proposed Speed Limits Kirkcaldy Plan 5 of 9				 ROADS & TRANSPORTATION SERVICES		
SCALE		NTS	DRAWING No.		TRO25_33/5	HEAD OF SERVICE - JOHN MITCHELL		
DESIGNED	KJ		DRAWN	KJ	CHECKED	LC	APPROVED	LC
						DATE	MAY 2025	




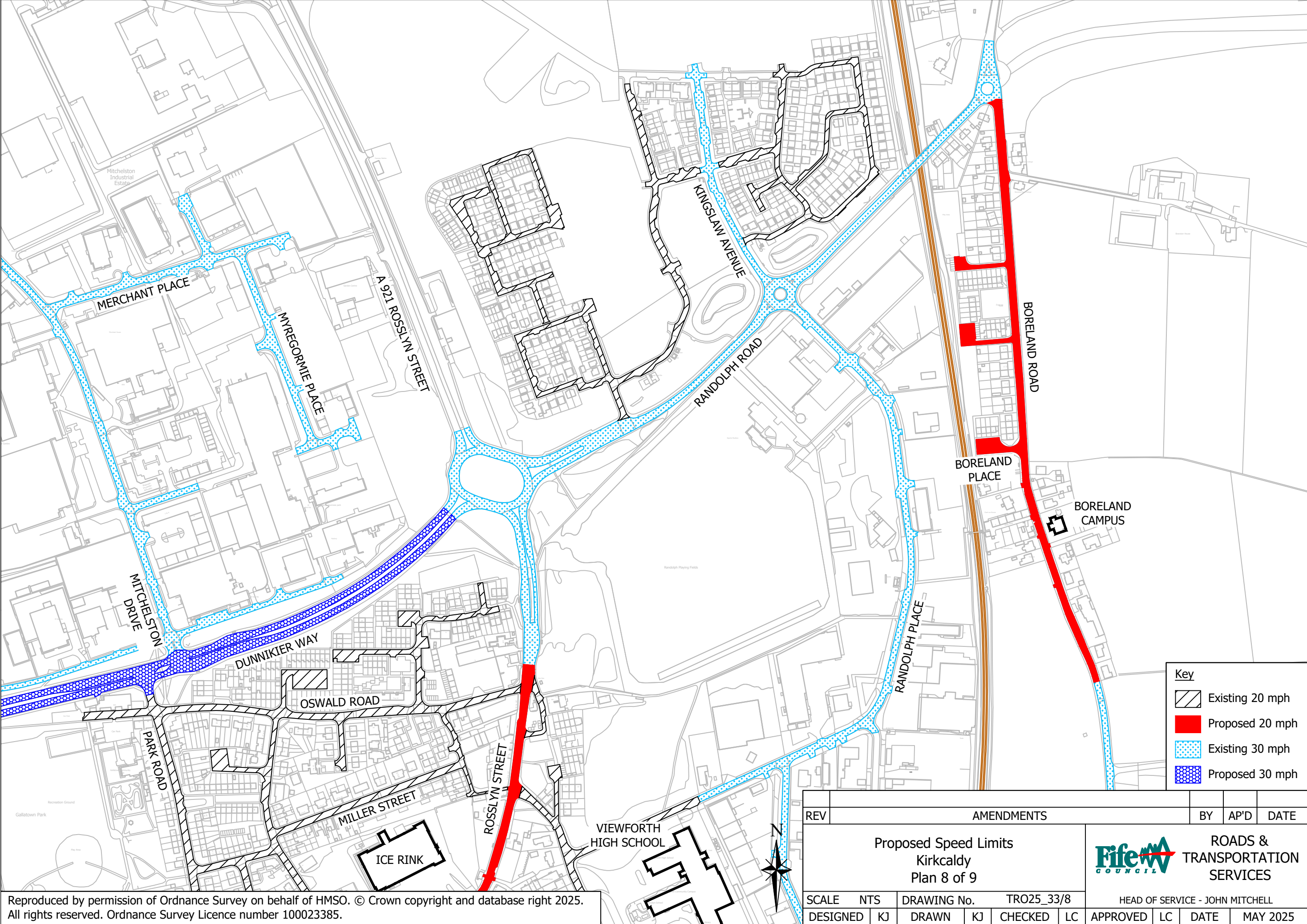
Reproduced by permission of Ordnance Survey on behalf of HMSO. © Crown copyright and database right 2025. All rights reserved. Ordnance Survey Licence number 100023385.

REV	AMENDMENTS										BY	AP'D	DATE		
Proposed Speed Limits Kirkcaldy Plan 6 of 9										 ROADS & TRANSPORTATION SERVICES					
SCALE		NTS		DRAWING No.		TRO25_33/6		HEAD OF SERVICE - JOHN MITCHELL							
DESIGNED		KJ		DRAWN		KJ		CHECKED		LC		APPROVED	LC	DATE	MAY 2025




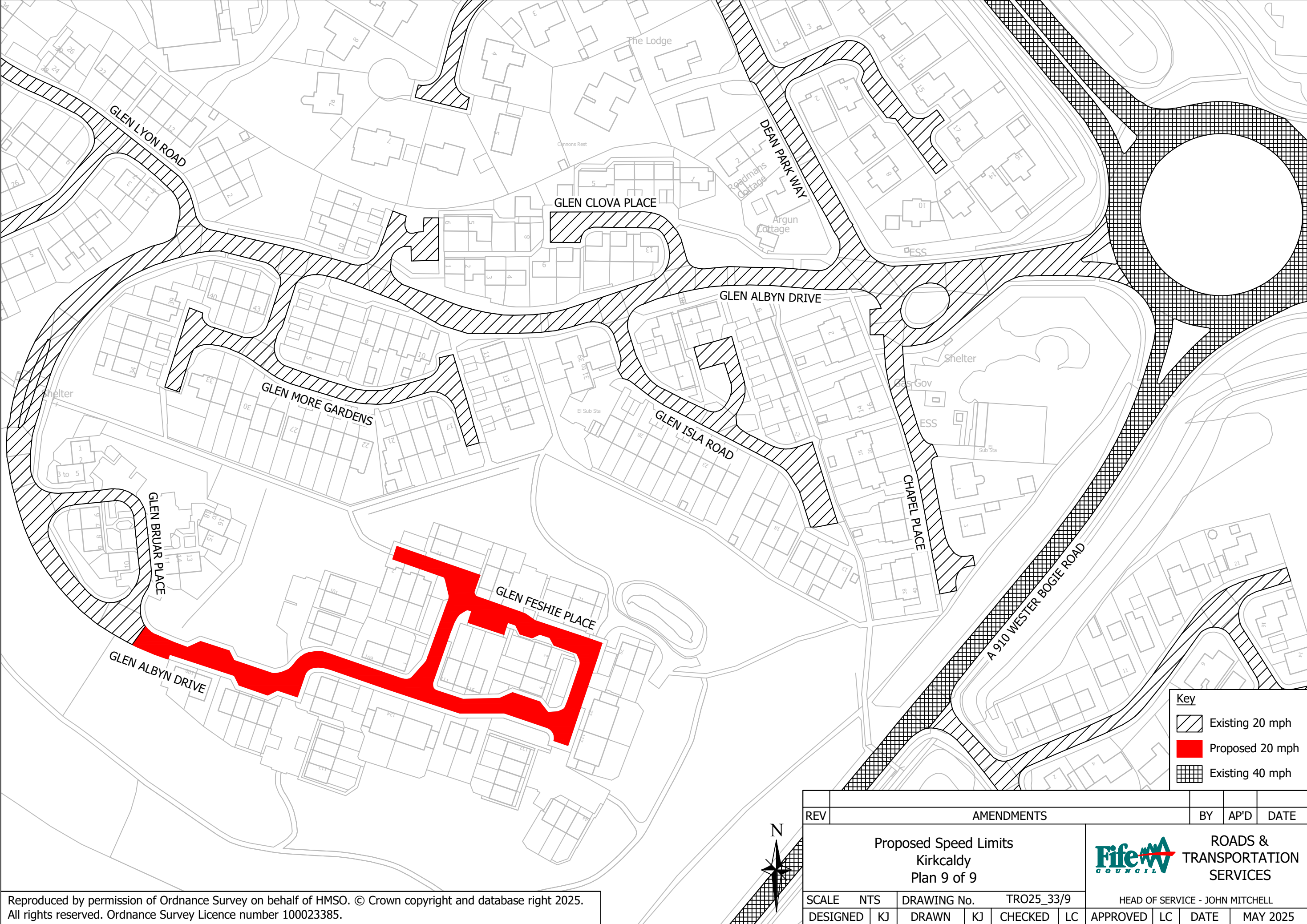
Reproduced by permission of Ordnance Survey on behalf of HMSO. © Crown copyright and database right 2025.
All rights reserved. Ordnance Survey Licence number 100023385.

REV		AMENDMENTS				BY	AP'D	DATE
		Proposed Speed Limits Kirkcaldy Plan 7 of 9				 ROADS & TRANSPORTATION SERVICES		
SCALE		NTS	DRAWING No.		TRO25_33/7	HEAD OF SERVICE - JOHN MITCHELL		
DESIGNED	KJ		DRAWN	KJ	CHECKED	LC	APPROVED	LC
					DATE	MAY 2025		



Reproduced by permission of Ordnance Survey on behalf of HMSO. © Crown copyright and database right 2025. All rights reserved. Ordnance Survey Licence number 100023385.

REV		AMENDMENTS				BY	AP'D	DATE
		Proposed Speed Limits Kirkcaldy Plan 8 of 9				 ROADS & TRANSPORTATION SERVICES		
SCALE	NTS	DRAWING No.		TRO25_33/8		HEAD OF SERVICE - JOHN MITCHELL		
DESIGNED	KJ	DRAWN	KJ	CHECKED	LC	APPROVED	LC	DATE
								MAY 2025



Key

- Existing 20 mph
- Proposed 20 mph
- Existing 40 mph

REV		AMENDMENTS				BY	AP'D	DATE
		Proposed Speed Limits Kirkcaldy Plan 9 of 9				ROADS & TRANSPORTATION SERVICES		
SCALE		NTS	DRAWING No.		TRO25_33/9	HEAD OF SERVICE - JOHN MITCHELL		
DESIGNED		KJ	DRAWN	KJ	CHECKED	LC	APPROVED	LC
							DATE	MAY 2025